

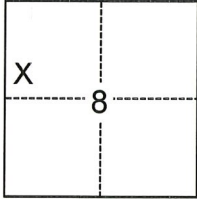
CORNER RECORD

Agency Index CR-20-114
Document Number _____

City of MANTECA County of SAN JOAQUIN, California
Brief Legal Description A portion of the west 1/2 of the northwest 1/4 of Section 8, T.2S., R.7E.

CORNER TYPE

COORDINATES (Optional)



- Government Corner
- Meander
- Rancho
- Control
- Property
- Other

N. _____ E. _____

Elevation _____

Units Metric U.S. Survey Foot

Horizontal Datum _____

Zone _____ Epoch Date _____

Vertical Datum _____

Complies with Public Resources Code §§8801-8819

Complies with Public Resources Code §§8890-8902

Date of Survey January 30, 2020

SEC. 8
T.2S., R.7E.

PLS Act Ref.: 8765(d) 8771 8773 Other:

Corner/Monument: Left as found Established Rebuilt Pre-Construction
 Found and tagged Reestablished Referenced Post-Construction

Narrative of corner identified and monument as found, set, reset, replaced, or removed:

See sheet #2 for description(s):

Referencing a 3/4" Iron Pipe with green plastic plug "LS 6406". Three reference marks, all being nail & 13/16" brass tags stamped "RP LS 9313", were set to preserve monument location prior to construction. See sheet 2 for details.

SURVEYOR'S STATEMENT

This Corner Record was prepared by me or under my direction in conformance with
 the Professional Land Surveyors' Act on June 5, 2020
 Signed [Signature] P.L.S. or R.C.E. No. 9313



COUNTY SURVEYOR'S STATEMENT

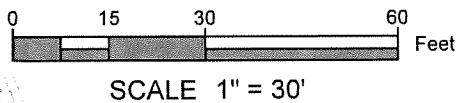
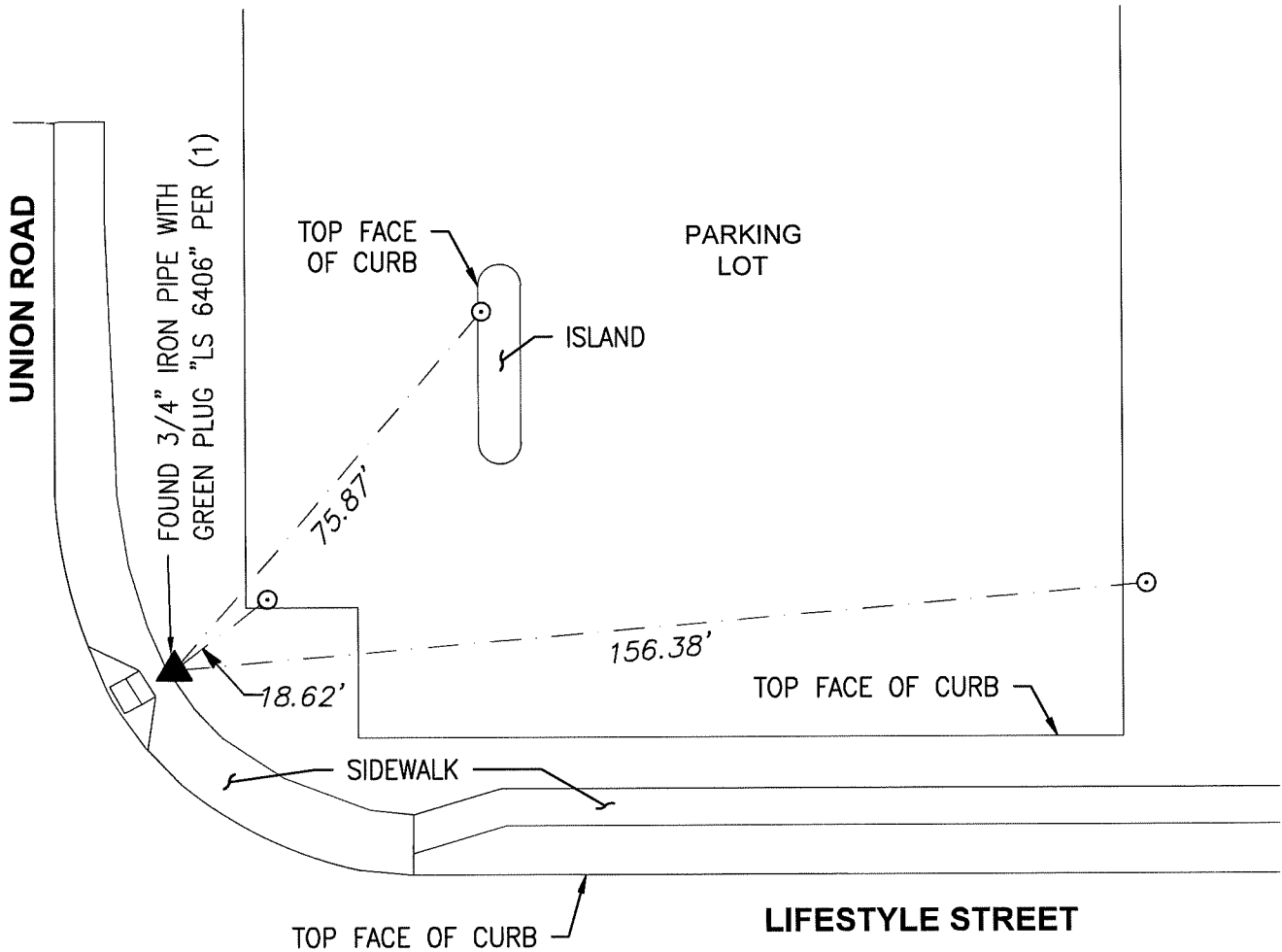
This Corner Record was received June 15, 2020
 and examined and filed July 2, 2020
 Signed James E. Hart P.L.S. or R.C.E. No. 8657
 Title County Surveyor



County Surveyor's Comment

REFERENCE:

- (1) BOOK 24 OF PARCEL MAPS, AT PAGE 141, SAN JOAQUIN COUNTY RECORDS



MONUMENT NOTES

▲ FOUND MONUMENT (AS NOTED)

⊙ SET NAIL & 13/16" BRASS TAG STAMPED "RP LS 9313" IN TOP OF CURB

THE PURPOSE OF THIS RECORD IS TO DOCUMENT THE PERPETUATION OF FOUND MONUMENT(S) PURSUANT TO THE PLS ACT SECTION 8771.