

CORNER RECORD

Agency Index

CR-20-105

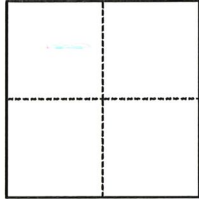
Document Number

City of _____ County of San Joaquin, California

Brief Legal Description 2.88 ACRE PARCEL SHOWN ON R.S. 26-91; SEC 53 OF THE C.M. WEBER GRANT

CORNER TYPE

COORDINATES (Optional)



- Government Corner
- Meander
- Rancho
- Control
- Property
- Other

Date of Survey January 22, 2020

N. _____ E. _____

Elevation _____

Units Metric U.S. Survey Foot

Horizontal Datum _____

Zone _____ Epoch Date _____

Vertical Datum _____

Complies with Public Resources Code §§8801-8819

Complies with Public Resources Code §§8890-8902

PLS Act Ref.:

8765(d)

8771

8773

Other:

Corner/
Monument:

Left as found

Established

Rebuilt

Pre-Construction

Found and tagged

Reestablished

Referenced

Post-Construction

Narrative of corner identified and monument as found, set, reset, replaced, or removed:

See sheet #2 for description(s):

FOUND MONUMENTS AS SHOWN ON DIAGRAM

FOUND WITNESS POINTS AS SHOWN ON DIAGRAM

SET MONUMENT AS SHOWN ON DIAGRAM

SURVEYOR'S STATEMENT

This Corner Record was prepared by me or under my direction in conformance with

the Professional Land Surveyors' Act on APRIL 22, 2020

Signed

Dylan Crawford

(P.L.S.) or R.C.E. No.

7788



COUNTY SURVEYOR'S STATEMENT

This Corner Record was received

June 5, 2020

and examined and filed

June 18, 2020

Signed

James E Hart

P.L.S. or R.C.E. No.

8657

Title

County Surveyor

County Surveyor's Comment

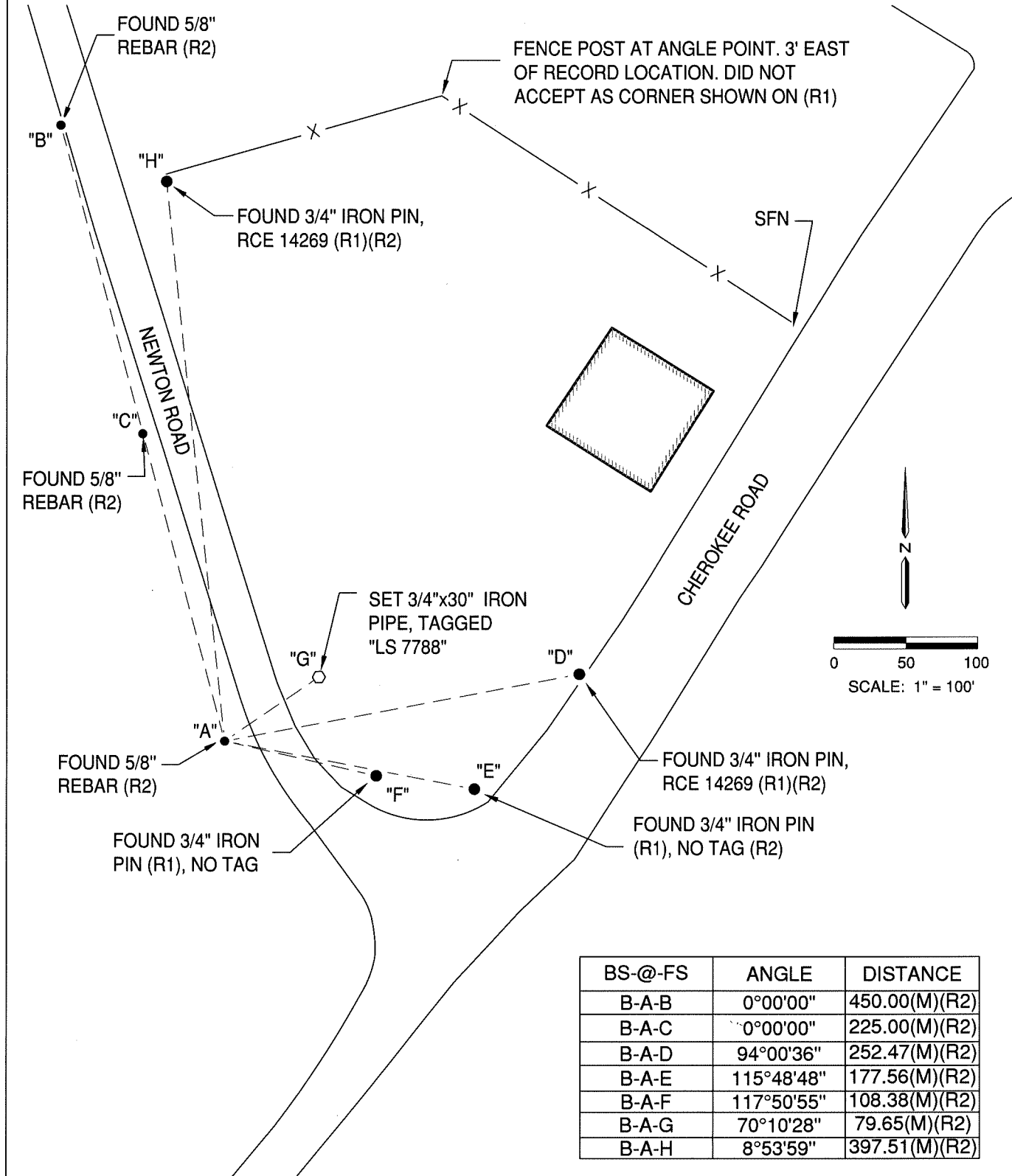


LEGEND:

FENCE	— X —
MONUMENT TIE LINE	— — — — —
EDGE OF PAVEMENT	— — — — —
RS	RECORD OF SURVEY
CR	CORNER RECORD

REFERENCES:

- (R1) 26 RS 91, SAN JOAQUIN COUNTY RECORDS
- (R2) CR-19-40, SAN JOAQUIN COUNTY SURVEYOR'S RECORDS



BS-@-FS	ANGLE	DISTANCE
B-A-B	0°00'00"	450.00(M)(R2)
B-A-C	0°00'00"	225.00(M)(R2)
B-A-D	94°00'36"	252.47(M)(R2)
B-A-E	115°48'48"	177.56(M)(R2)
B-A-F	117°50'55"	108.38(M)(R2)
B-A-G	70°10'28"	79.65(M)(R2)
B-A-H	8°53'59"	397.51(M)(R2)