

# CORNER RECORD

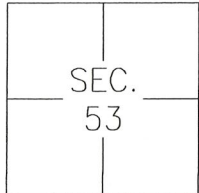
Agency Index CR-20-102

Document Number \_\_\_\_\_

City of UNINCORPORATED AREA

County of SAN JOAQUIN, California

Brief Legal Description MONUMENT ON WILCOX RD AND ALONG NORTHERLY LINE OF PARCEL B, 13-PM-28, S.J.C.R.



C.M. WEBER  
GRANT

### CORNER TYPE

- Government Corner  Control   
 Meander  Property   
 Rancho  Other

Date of Survey JANUARY 17, 2020

### COORDINATES (Optional)

- N. \_\_\_\_\_ E. \_\_\_\_\_  
 Elevation \_\_\_\_\_  
 Units Metric  U.S. Survey Foot   
 Horizontal Datum \_\_\_\_\_  
 Zone \_\_\_\_\_ Epoch Date \_\_\_\_\_  
 Vertical Datum: \_\_\_\_\_  
 Complies with Public Resources Code §§8801-8819  
 Complies with Public Resources Code §§8890-8902

PLS Act Ref.:  8765(d)  8771  8773 Other: \_\_\_\_\_

Corner/Monument:  Left as found  Established  Rebuilt  Pre-Construction  
 Found and tagged  Reestablished  Referenced  Post-Construction

Narrative of corner identified and monument as found, set, reset, replaced, or removed:  
 See sheet #2 for description(s):

### SURVEYOR'S STATEMENT

This Corner Record was prepared by me or under my direction in conformance with

the Professional Land Surveyor's Act on MAY 7<sup>TH</sup>, 2020

Signed [Signature] P.L.S. or R.C.E. No.: 8366



### COUNTY SURVEYOR'S STATEMENT

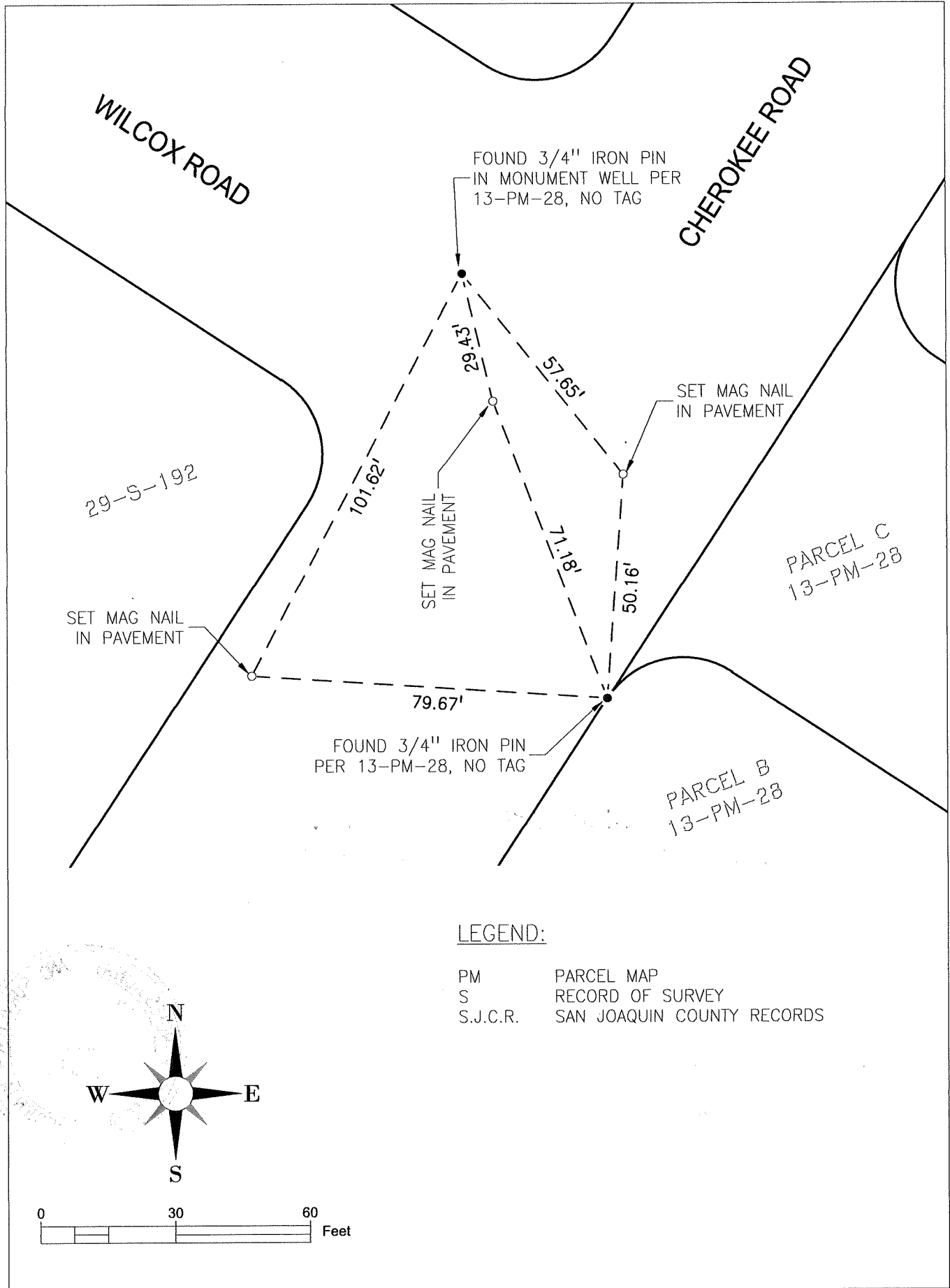
This Corner Record was received May 18, 2020 and examined  
 and filed June 4, 2020

Signed James E. Hart P.L.S. or R.C.E. No.: 8657

Title County Surveyor

County Surveyor's Comment \_\_\_\_\_





LEGEND:

- PM      PARCEL MAP
- S      RECORD OF SURVEY
- S.J.C.R.      SAN JOAQUIN COUNTY RECORDS

