

# CORNER RECORD

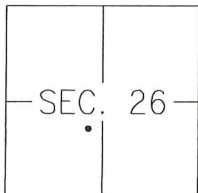
Agency Index CR-20-99

Document Number \_\_\_\_\_

City of UNINCORPORATED AREA

County of SAN JOAQUIN, California

Brief Legal Description CENTERLINE MONUMENT ON BURNHAM ROAD, 2410' EAST OF AUSTIN ROAD



T1N/R7E

### CORNER TYPE

- Government Corner  Control   
 Meander  Property   
 Rancho  Other

Date of Survey DECEMBER 20, 2019

### COORDINATES (Optional)

- N. \_\_\_\_\_ E. \_\_\_\_\_  
 Elevation \_\_\_\_\_  
 Units Metric  U.S. Survey Foot   
 Horizontal Datum \_\_\_\_\_  
 Zone \_\_\_\_\_ Epoch Date \_\_\_\_\_  
 Vertical Datum: \_\_\_\_\_  
 Complies with Public Resources Code §§8801-8819  
 Complies with Public Resources Code §§8890-8902

PLS Act Ref.:  8765(d)  8771  8773 Other: \_\_\_\_\_

Corner/Monument:  Left as found  Established  Rebuilt  Pre-Construction  
 Found and tagged  Reestablished  Referenced  Post-Construction

Narrative of corner identified and monument as found, set, reset, replaced, or removed:

See sheet #2 for description(s):

FOUND 5/8" STEEL PIN WITH CAP TAGGED L.S. 7698 ON THE CENTERLINE OF PROPOSED BURNHAM ROAD, LYING 2410'±, MEASURED ALONG THE CENTERLINE EASTERLY OF THE INTERSECTION WITH AUSTIN ROAD, PER RECORD OF SURVEY FILED IN BOOK 35 OF SURVEYS, AT PAGE 38, SAN JOAQUIN COUNTY RECORDS.

SET SWING TIES FOR MONUMENT PRIOR TO CONSTRUCTION WORK.

### SURVEYOR'S STATEMENT

This Corner Record was prepared by me or under my direction in conformance with

the Professional Land Surveyor's Act on MAY 7<sup>TH</sup>, 2020.

Signed [Signature] P.L.S. or R.C.E. No.: 8366



### COUNTY SURVEYOR'S STATEMENT

This Corner Record was received May 18, 2020 and examined

and filed June 4, 2020.

Signed James E. Hart P.L.S. or R.C.E. No.: 8657

Title County Surveyor

County Surveyor's Comment \_\_\_\_\_



