

CORNER RECORD

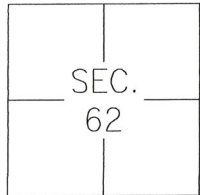
Agency Index CR-20-98

Document Number _____

City of UNINCORPORATED AREA

County of SAN JOAQUIN, California

Brief Legal Description MOST WESTERLY CORNER OF PARCEL A, 6-PM-01, S.J.C.R.



C.M. WEBER
GRANT

CORNER TYPE

- Government Corner Control
- Meander Property
- Rancho Other

Date of Survey JANUARY 17, 2020

COORDINATES (Optional)

- N. _____ E. _____
- Elevation _____
- Units Metric U.S. Survey Foot
- Horizontal Datum _____
- Zone _____ Epoch Date _____
- Vertical Datum: _____
- Complies with Public Resources Code §§8801-8819
- Complies with Public Resources Code §§8890-8902

PLS Act Ref.: 8765(d) 8771 8773 Other: _____

Corner/Monument: Left as found Established Rebuilt Pre-Construction

Found and tagged Reestablished Referenced Post-Construction

Narrative of corner identified and monument as found, set, reset, replaced, or removed:

See sheet #2 for description(s):

SURVEYOR'S STATEMENT

This Corner Record was prepared by me or under my direction in conformance with the Professional Land Surveyor's Act on MAY 7TH, 2020.

Signed [Signature] P.L.S. or R.C.E. No.: 8366



COUNTY SURVEYOR'S STATEMENT

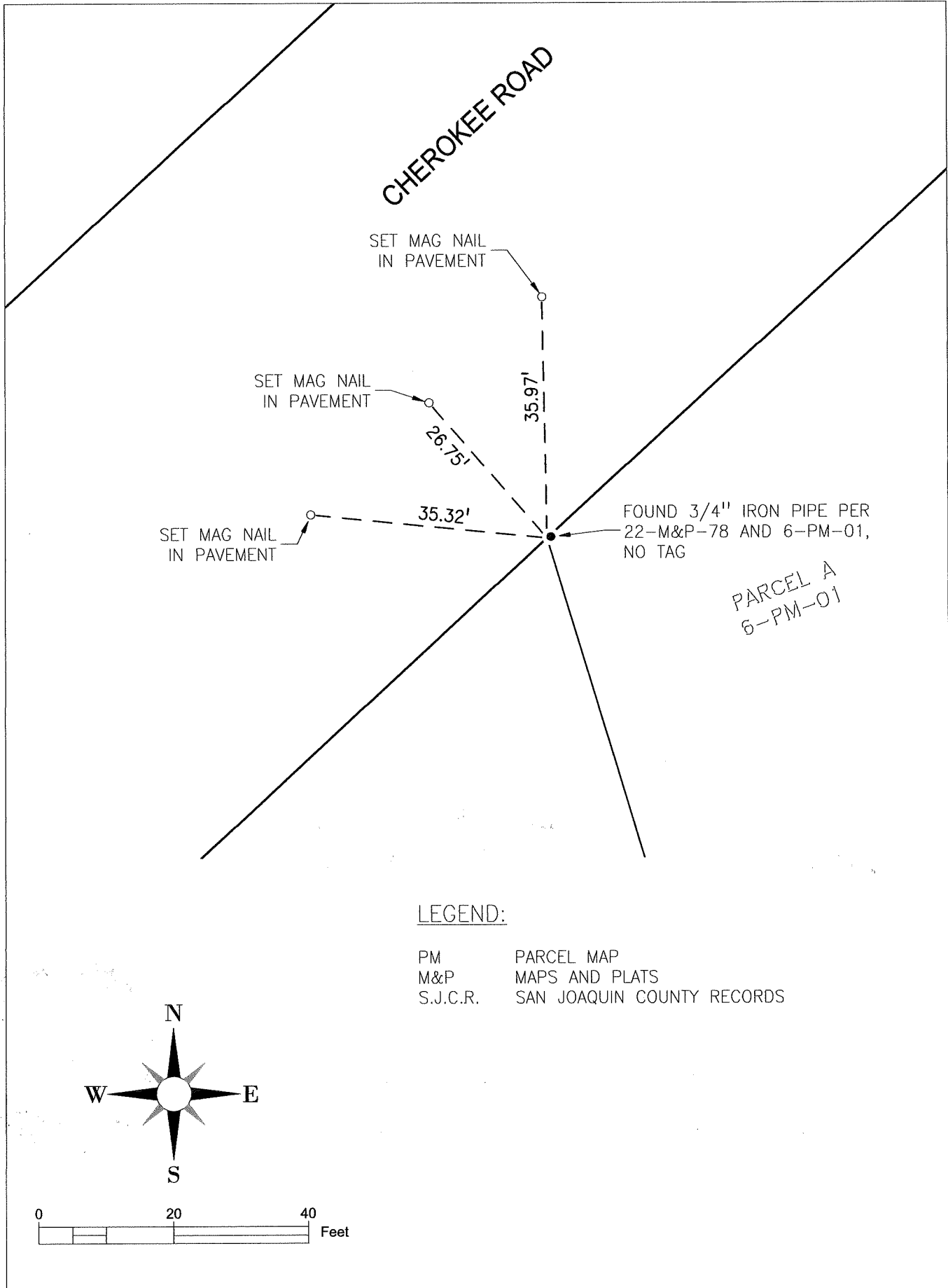
This Corner Record was received May 18, 2020 and examined and filed June 4, 2020.

Signed James E. Hart P.L.S. or R.C.E. No.: 8657

Title County Surveyor



County Surveyor's Comment _____



LEGEND:

- PM PARCEL MAP
- M&P MAPS AND PLATS
- S.J.C.R. SAN JOAQUIN COUNTY RECORDS

