

# CORNER RECORD

Agency Index CR-20-97

Document Number \_\_\_\_\_

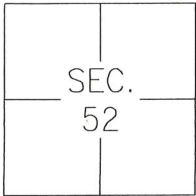
City of UNINCORPORATED AREA

County of SAN JOAQUIN, California

Brief Legal Description MOST WESTERLY CORNER OF LOT 11, 22-M&P-78, S.J.C.R.

### CORNER TYPE

### COORDINATES (Optional)



- Government Corner  Control   
 Meander  Property   
 Rancho  Other

N. \_\_\_\_\_ E. \_\_\_\_\_  
 Elevation \_\_\_\_\_  
 Units Metric  U.S. Survey Foot   
 Horizontal Datum \_\_\_\_\_  
 Zone \_\_\_\_\_ Epoch Date \_\_\_\_\_  
 Vertical Datum: \_\_\_\_\_  
 Complies with Public Resources Code §§8801-8819  
 Complies with Public Resources Code §§8890-8902

C.M. WEBER  
GRANT  
 Date of Survey JANUARY 17, 2020

PLS Act Ref.:  8765(d)  8771  8773 Other: \_\_\_\_\_

Corner/Monument:  Left as found  Established  Rebuilt  Pre-Construction  
 Found and tagged  Reestablished  Referenced  Post-Construction

Narrative of corner identified and monument as found, set, reset, replaced, or removed:  
 See sheet #2 for description(s):

### SURVEYOR'S STATEMENT

This Corner Record was prepared by me or under my direction in conformance with

the Professional Land Surveyor's Act on MAY 7TH, 2020

Signed [Signature] P.L.S. or R.C.E. No.: 8366



### COUNTY SURVEYOR'S STATEMENT

This Corner Record was received May 18, 2020 and examined

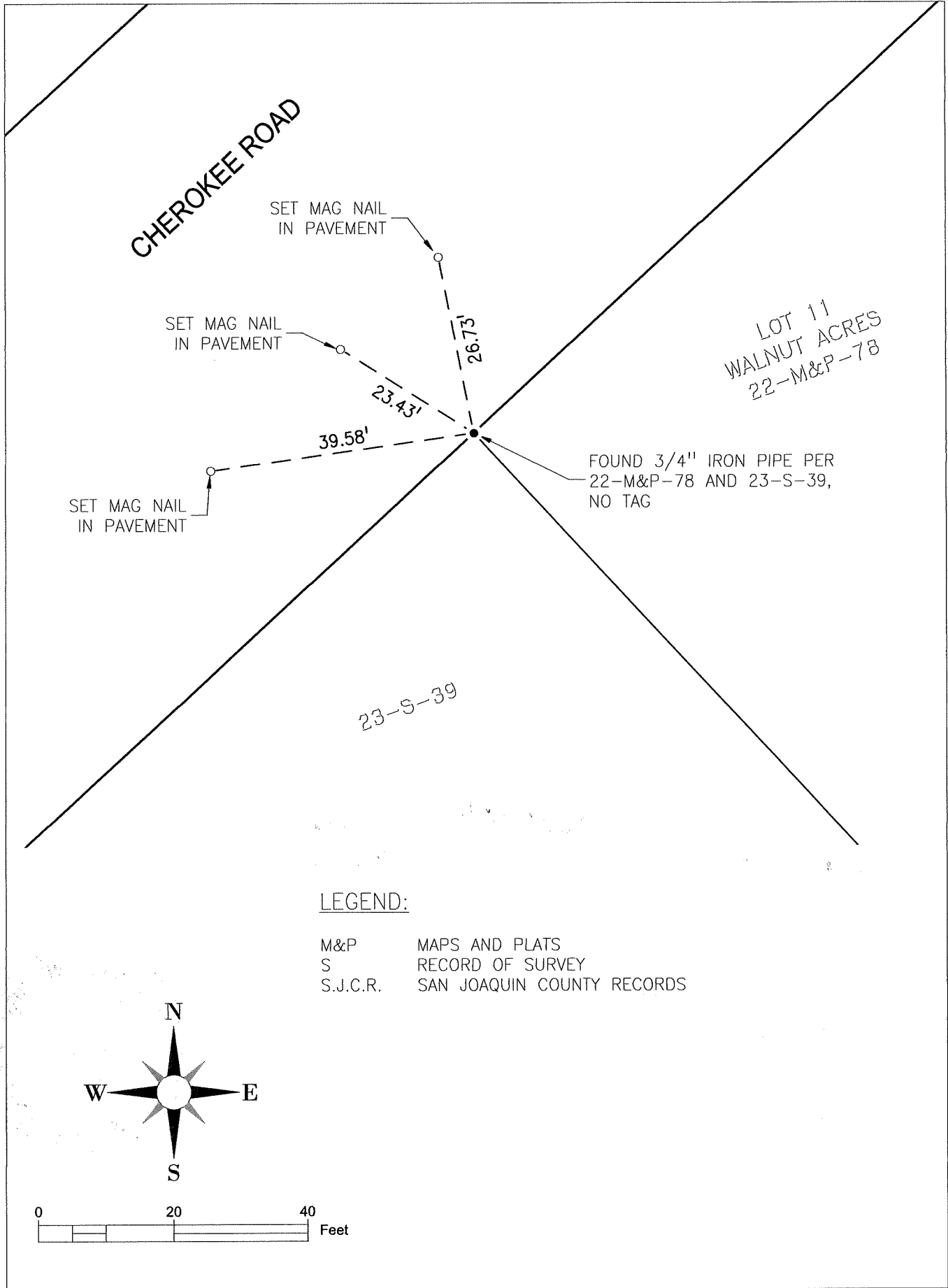
and filed June 4, 2020

Signed James E. Hart P.L.S. or R.C.E. No.: 8657

Title County Surveyor

County Surveyor's Comment \_\_\_\_\_





CHEROKEE ROAD

SET MAG NAIL  
IN PAVEMENT

SET MAG NAIL  
IN PAVEMENT

SET MAG NAIL  
IN PAVEMENT

LOT 11  
WALNUT ACRES  
22-M&P-78

FOUND 3/4" IRON PIPE PER  
22-M&P-78 AND 23-S-39,  
NO TAG

23-S-39

LEGEND:

- M&P      MAPS AND PLATS
- S         RECORD OF SURVEY
- S.J.C.R.    SAN JOAQUIN COUNTY RECORDS

