

CORNER RECORD

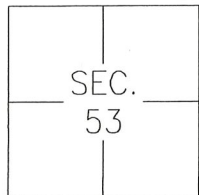
Agency Index CR-20-95

Document Number _____

City of UNINCORPORATED

County of SAN JOAQUIN, California

Brief Legal Description MOST EASTERLY CORNER OF DESIGNATED REMAINDER, 26-PM-10, S.J.C.R.



C.M. WEBER
GRANT

CORNER TYPE

- Government Corner Control
- Meander Property
- Rancho Other

Date of Survey MARCH 3, 2020

COORDINATES (Optional)

- N. _____ E. _____
- Elevation _____
- Units Metric U.S. Survey Foot
- Horizontal Datum _____
- Zone _____ Epoch Date _____
- Vertical Datum: _____
- Complies with Public Resources Code §§8801-8819
- Complies with Public Resources Code §§8890-8902

PLS Act Ref.: 8765(d) 8771 8773 Other: _____

Corner/Monument: Left as found Established Rebuilt Pre-Construction
 Found and tagged Reestablished Referenced Post-Construction

Narrative of corner identified and monument as found, set, reset, replaced, or removed:
 See sheet #2 for description(s):

SURVEYOR'S STATEMENT

This Corner Record was prepared by me or under my direction in conformance with the Professional Land Surveyor's Act on MAY 7TH, 2020.
 Signed [Signature] P.L.S. or R.C.E. No.: 8366



COUNTY SURVEYOR'S STATEMENT

This Corner Record was received May 18, 2020 and examined and filed June 4, 2020.
 Signed James E. Hart P.L.S. or R.C.E. No.: 8657
 Title County Surveyor



County Surveyor's Comment _____

LEGEND:

PM PARCEL MAP
S RECORD OF SURVEY
S.J.C.R. SAN JOAQUIN COUNTY RECORDS

12-S-156
S.J.C.R.

DESIGNATED
REMAINDER
26-PM-10
S.J.C.R.

FOUND 1" IRON PIPE
STAMPED "CA. DIV. OF
HWYS" PER 26-PM-10

SET MAG NAIL
IN AC CURB

59.24'

23.33'

SET MAG NAIL
IN AC CURB

64.82'

SET MAG NAIL
IN AC CURB

WATERLOO ROAD
(STATE HIGHWAY 88)

