

CORNER RECORD

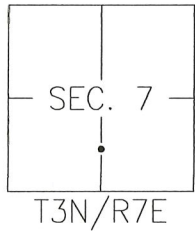
Agency Index CR-20-92

Document Number _____

City of LODI

County of SAN JOAQUIN, California

Brief Legal Description MONUMENT AT SOUTHWEST CORNER OF PARCEL 1, 23-PM-84, S.J.C.R.



CORNER TYPE

- Government Corner Control
 Meander Property
 Rancho Other

Date of Survey OCTOBER 22, 2019

COORDINATES (Optional)

- N. _____ E. _____
 Elevation _____
 Units Metric U.S. Survey Foot
 Horizontal Datum _____
 Zone _____ Epoch Date _____
 Vertical Datum: _____
 Complies with Public Resources Code §§8801-8819
 Complies with Public Resources Code §§8890-8902

PLS Act Ref.: 8765(d) 8771 8773 Other: _____

Corner/Monument: Left as found Established Rebuilt Pre-Construction
 Found and tagged Reestablished Referenced Post-Construction

Narrative of corner identified and monument as found, set, reset, replaced, or removed:

See sheet #2 for description(s):

SURVEYOR'S STATEMENT

This Corner Record was prepared by me or under my direction in conformance with the Professional Land Surveyor's Act on APRIL 6TH, 2020.

Signed [Signature] P.L.S. or R.C.E. No.: 8366



COUNTY SURVEYOR'S STATEMENT

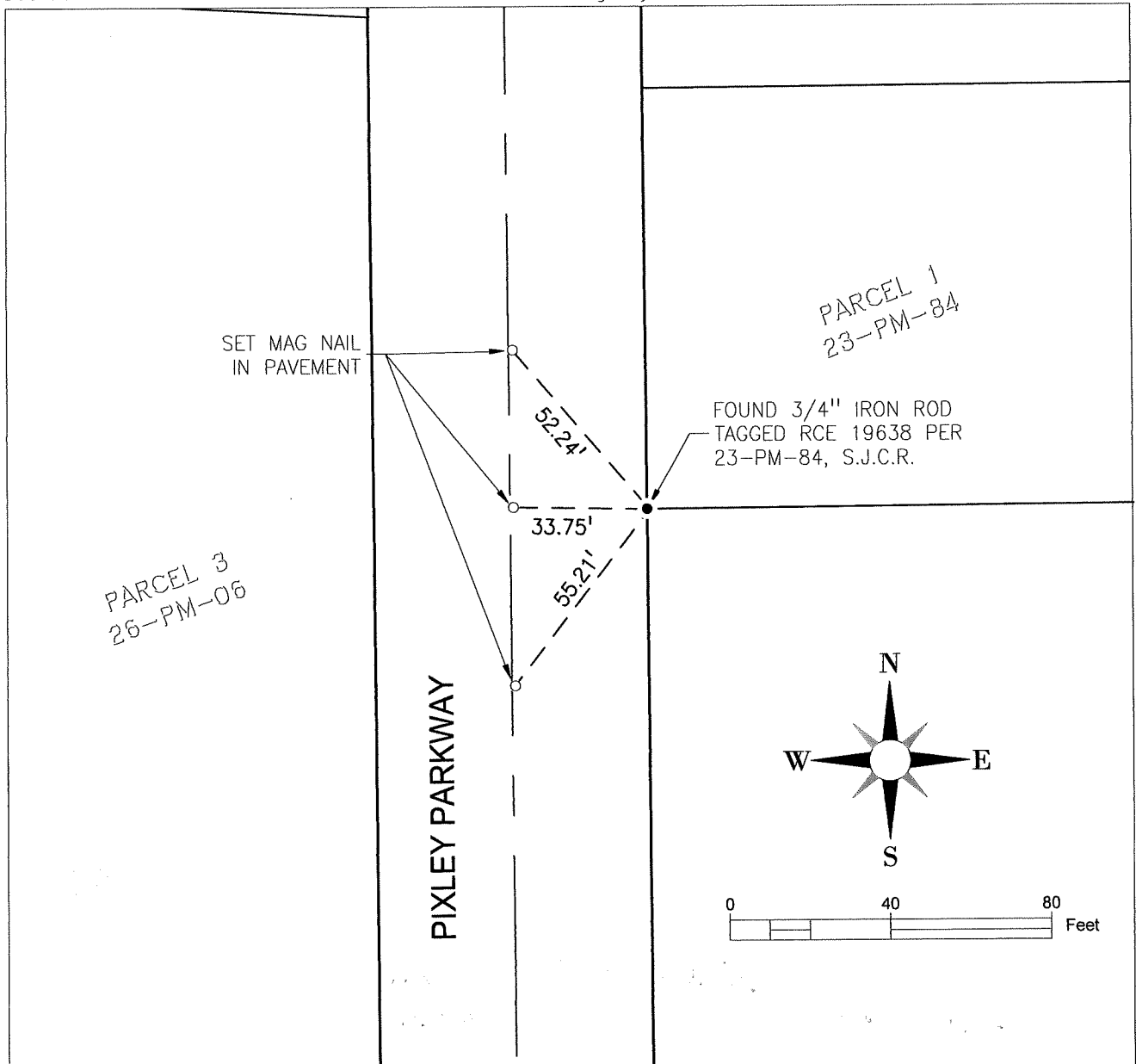
This Corner Record was received April 13, 2020 and examined and filed May 14, 2020.

Signed James E Hart P.L.S. or R.C.E. No.: 8657

Title County Surveyor

County Surveyor's Comment _____





LEGEND:

PM PARCEL MAP
S.J.C.R. SAN JOAQUIN COUNTY RECORDS