

CORNER RECORD

Agency Index CR-20-84

Document Number _____

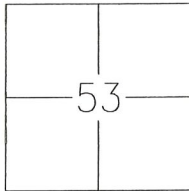
City of UNINCORPORATED AREA

County of SAN JOAQUIN, California

Brief Legal Description MONUMENTS NEAR LOTS 27 AND 28 SHOWN ON 24-M&P-7, S.J.C.R.

CORNER TYPE

COORDINATES (Optional)



- Government Corner Control
 Meander Property
 Rancho Other

N. _____ E. _____
 Elevation _____
 Units Metric U.S. Survey Foot
 Horizontal Datum _____
 Zone _____ Epoch Date _____
 Vertical Datum: _____

C.M. WEBER
GRANT

Date of Survey 2019-07-17

- Complies with Public Resources Code §§8801-8819
 Complies with Public Resources Code §§8890-8902

PLS Act Ref.: 8765(d) 8771 8773 Other: _____

Corner/Monument: Left as found Established Rebuilt Pre-Construction
 Found and tagged Reestablished Referenced Post-Construction

Narrative of corner identified and monument as found, set, reset, replaced, or removed:
 See sheet #2 for description(s):

FOUND CHISELED "+" IN CONCRETE AS SHOWN ON SHEET 2. THESE MONUMENTS ARE NOT OF RECORD, BUT THEIR POSITIONS APPEAR TO CORRESPOND TO BEING WITNESS CORNERS

SURVEYOR'S STATEMENT

This Corner Record was prepared by me or under my direction in conformance with the Professional Land Surveyor's Act on April 6th, 2020.
 Signed [Signature] P.L.S. or R.C.E. No.: 8366

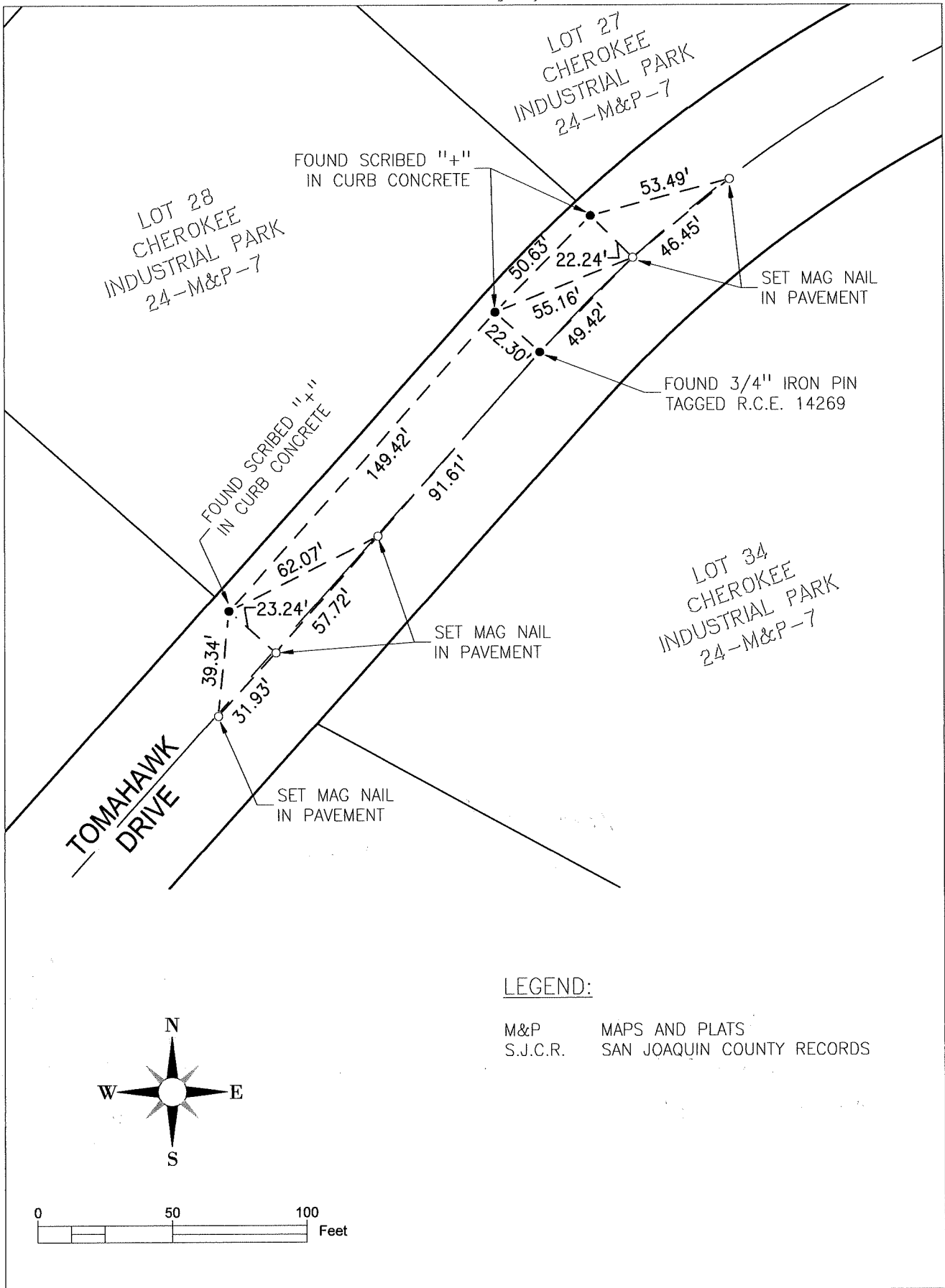


COUNTY SURVEYOR'S STATEMENT

This Corner Record was received April 13, 2020 and examined and filed May 14, 2020.
 Signed James E. Hart P.L.S. or R.C.E. No.: 8657
 Title County Surveyor



County Surveyor's Comment _____



LEGEND:

M&P	MAPS AND PLATS
S.J.C.R.	SAN JOAQUIN COUNTY RECORDS