

CORNER RECORD

Agency Index CR-20-81

Document Number _____

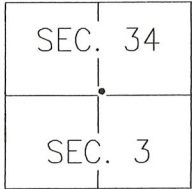
City of LODI

County of SAN JOAQUIN, California

Brief Legal Description MONUMENTS NEAR THE SOUTHWEST CORNER OF LOT 79, 27-M&P-52, S.J.C.R.

CORNER TYPE

COORDINATES (Optional)



T4N/R6E Government Corner Control
 Meander Property
 Rancho Other

N. _____ E. _____

Elevation _____

Units Metric U.S. Survey Foot

Horizontal Datum _____

Zone _____ Epoch Date _____

Vertical Datum: _____

Complies with Public Resources Code §§8801-8819

Complies with Public Resources Code §§8890-8902

Date of Survey 4 OCTOBER, 2019

PLS Act Ref.: 8765(d) 8771 8773

Other: _____

Corner/Monument: Left as found Established Rebuilt Pre-Construction
 Found and tagged Reestablished Referenced Post-Construction

Narrative of corner identified and monument as found, set, reset, replaced, or removed:

See sheet #2 for description(s):

SURVEYOR'S STATEMENT

This Corner Record was prepared by me or under my direction in conformance with

the Professional Land Surveyor's Act on APRIL 6TH, 2020.

Signed [Signature] P.L.S. or R.C.E. No.: 8366



COUNTY SURVEYOR'S STATEMENT

This Corner Record was received April 13, 2020 and examined

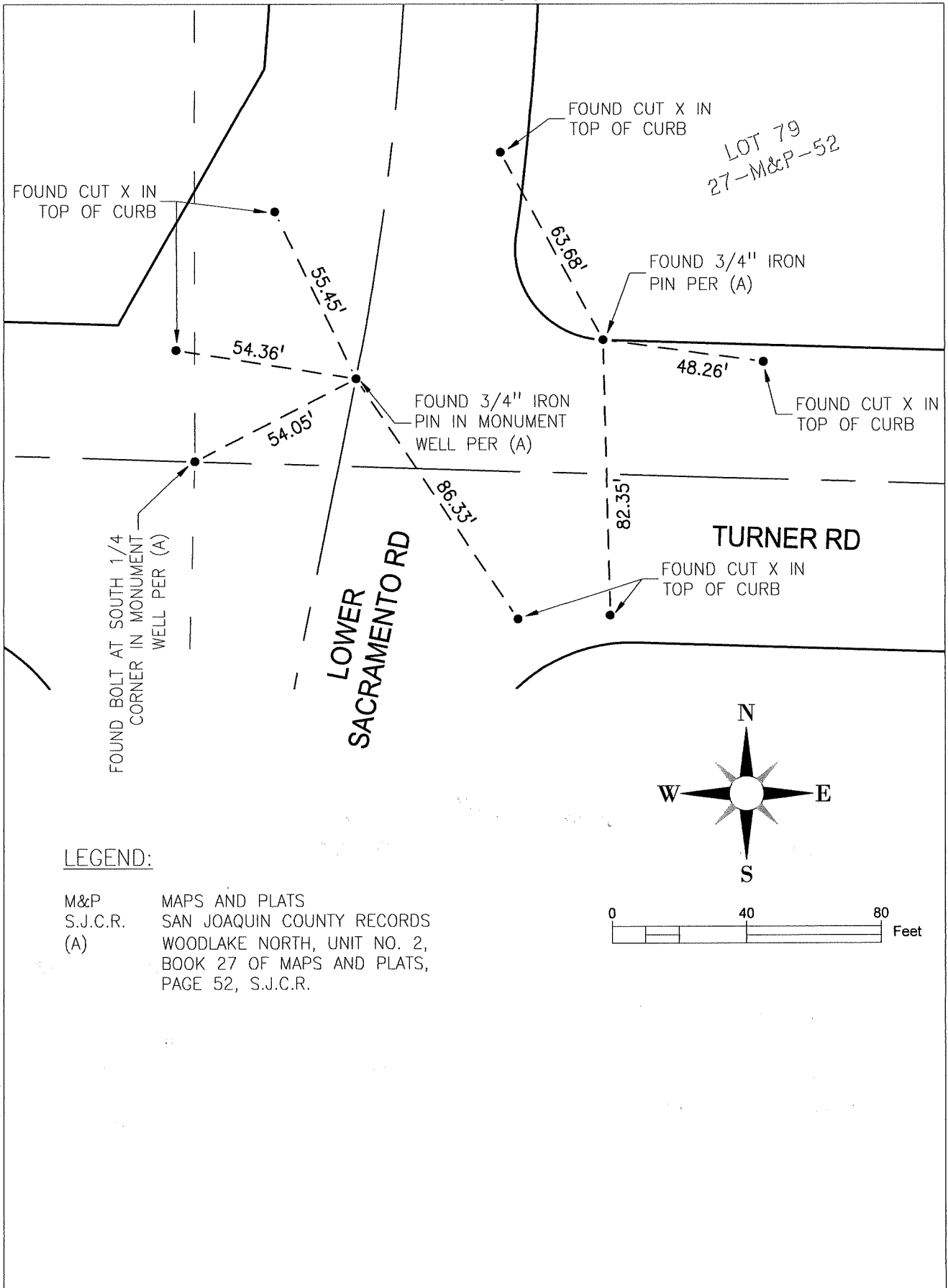
and filed May 14, 2020.

Signed James E. Hart P.L.S. or R.C.E. No.: 8657

Title County Surveyor

County Surveyor's Comment _____





LEGEND:

M&P MAPS AND PLATS
 S.J.C.R. SAN JOAQUIN COUNTY RECORDS
 (A) WOODLAKE NORTH, UNIT NO. 2,
 BOOK 27 OF MAPS AND PLATS,
 PAGE 52, S.J.C.R.