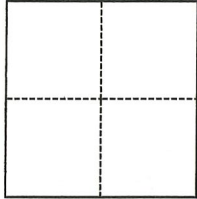


CORNER RECORD

Agency Index CR-20-77
 Document Number _____

City of LODI County of SAN JOAQUIN, California
 Brief Legal Description LOTS 3 AND 4 IN BLOCK 12, MOKELUMNE, MAPS AND PLATS, M&P 2-12

CORNER TYPE



- Government Corner Control
 Meander Property
 Rancho Other

Date of Survey February 28, 2020

COORDINATES (Optional)

N. _____ E. _____
 Elevation _____
 Units Metric U.S. Survey Foot
 Horizontal Datum _____
 Zone _____ Epoch Date _____
 Vertical Datum _____
 Complies with Public Resources Code §§8801-8819
 Complies with Public Resources Code §§8890-8902

PLS Act Ref.: 8765(d) 8771 8773 Other:
 Corner/Monument: Left as found Established Rebuilt Pre-Construction
 Found and tagged Reestablished Referenced Post-Construction

Narrative of corner identified and monument as found, set, reset, replaced, or removed:
 See sheet #2 for description(s):

POST-CONSTRUCTION CORNER RECORD. THIS DOCUMENT IS FOR THE PURPOSE OF PRESERVING AND ESTABLISHING TIES TO EXISTING MONUMENTS IN THE AREA OF NEW CONSTRUCTION OF IMPROVEMENTS, AS SHOWN ON BOOK 7 OF RECORD OF SURVEYS, PAGE 120, SAN JOAQUIN COUNTY RECORDS.

SURVEYOR'S STATEMENT

This Corner Record was prepared by me or under my direction in conformance with the Professional Land Surveyors' Act on March 24, 2020.
 Signed [Signature] P.L.S. or R.C.E. No. L.S. 7600



COUNTY SURVEYOR'S STATEMENT

This Corner Record was received March 30, 2020
 and examined and filed April 16, 2020.
 Signed James E. Hart P.L.S. or R.C.E. No. 8657
 Title County Surveyor



County Surveyor's Comment

LEGEND:

- C.R. CORNER RECORD
- DOC. DOCUMENT
- FD. FOUND
- I. IRON
- M&P MAPS AND PLATS, BOOK-PAGE
- P.M. PARCEL MAP, BOOK-PAGE
- REF. REFERENCE
- R.A. RECORD OF SURVEY, BOOK-PAGE
- S.J.C.R. SAN JOAQUIN COUNTY RECORDS
- S.J.C.S.R. SAN JOAQUIN COUNTY SURVEYOR'S RECORDS

- ⊕ SET CHISELED CROSS W/ BRASS TAG L.S. 7600
- ▲ FOUND PK NAIL/SHINER PER (D)
- SET 3/4"X30" PIN W/ TAG L.S. 7600

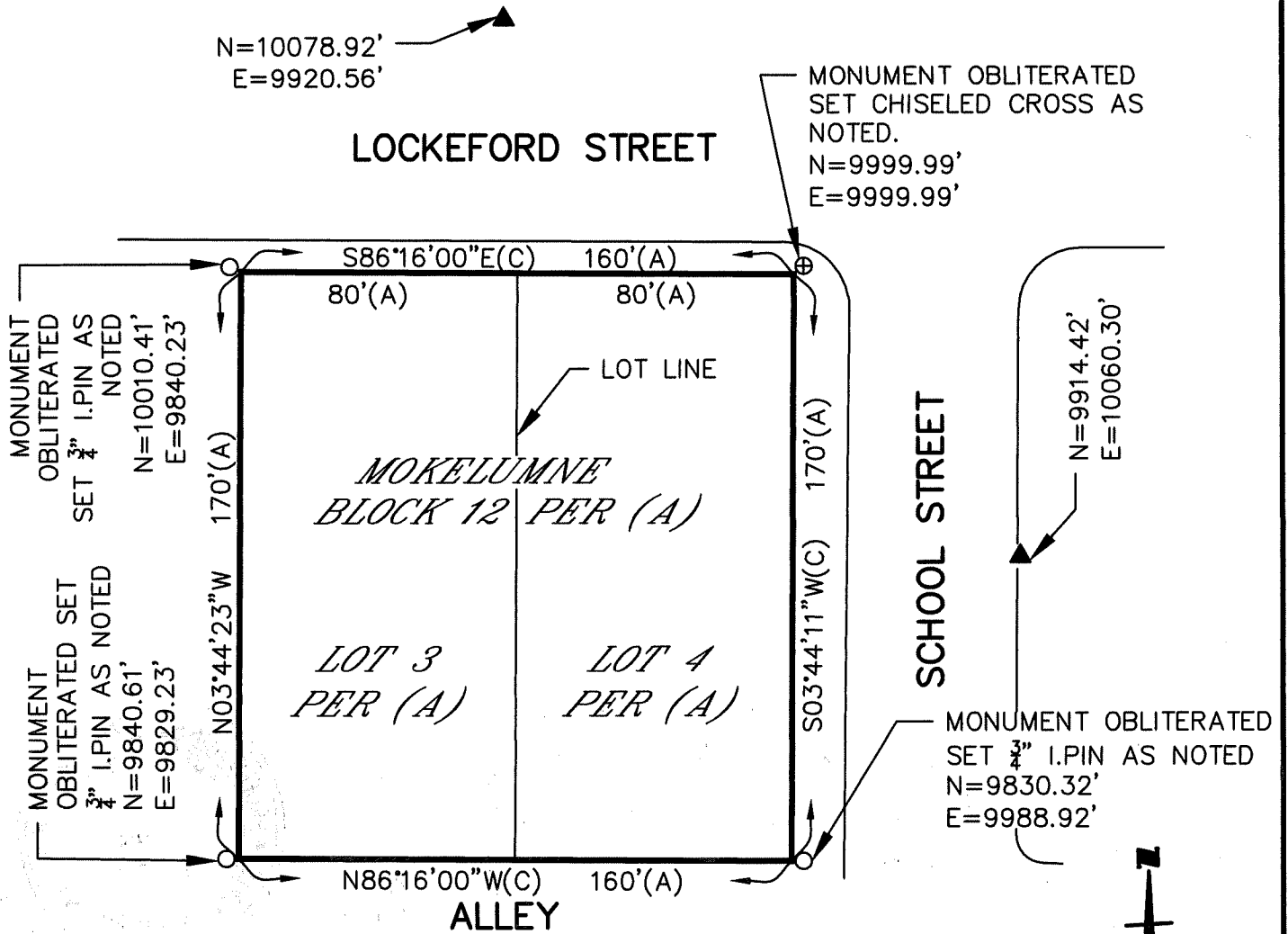
DESCRIPTION:

THIS DOCUMENT IS FOR THE PURPOSE OF PRESERVING AND ESTABLISHING TIES TO EXISTING MONUMENTS.

REFERENCES:

- (A) M&P 2-12, S.J.C.R.
- (B) R.S. 7-120, S.J.C.R.
- (C) P.M. 22-91, S.J.C.R.
- (D) C.R. 20-12, S.J.C.S.R.

RETRACEMENT SURVEY WILL DETERMINE VALIDITY OF MONUMENT LOCATIONS. SET MONUMENT TIES TO EXISTING MONUMENTS.



WONG ENGINEERS, INC.
 PLANNING ENGINEERING SURVEYING
 4578 FEATHER RIVER DRIVE, SUITE A
 STOCKTON, CALIFORNIA (209) 476-0011
 MARCH 24, 2020 2 OF 2

