

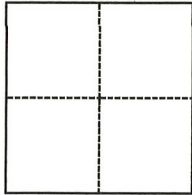
# CORNER RECORD

Agency Index CR-20-75  
Document Number \_\_\_\_\_

City of STOCKTON County of SAN JOAQUIN, California  
Brief Legal Description PARCEL 5 PER P.M. 10-59, N.W. 1/4 OF SEC. 14, T.2 N., R. 6 E., M.D.B. & M.

### CORNER TYPE

### COORDINATES (Optional)



- Government Corner
- Meander
- Rancho
- Control
- Property
- Other

Date of Survey FEB. 25, 2020

N. \_\_\_\_\_ E. \_\_\_\_\_  
 Elevation \_\_\_\_\_  
 Units  Metric  U.S. Survey Foot  
 Horizontal Datum \_\_\_\_\_  
 Zone \_\_\_\_\_ Epoch Date \_\_\_\_\_  
 Vertical Datum \_\_\_\_\_  
 Complies with Public Resources Code §§8801-8819  
 Complies with Public Resources Code §§8890-8902

- PLS Act Ref.:  8765(d)  8771  8773  Other: \_\_\_\_\_
- Corner/Monument:  Left as found  Established  Rebuilt  Pre-Construction  
 Found and tagged  Reestablished  Referenced  Post-Construction

Narrative of corner identified and monument as found, set, reset, replaced, or removed:  
 See sheet #2 for description(s):

POST-CONSTRUCTION CORNER RECORD. THIS DOCUMENT IS FOR THE PURPOSE OF PRESERVING AND ESTABLISHING TIES TO EXISTING MONUMENTS IN THE AREA OF NEW CONSTRUCTION OF IMPROVEMENTS, AS SHOWN ON BOOK 10 OF PARCEL MAPS, PAGE 59, SAN JOAQUIN COUNTY RECORDS.

### SURVEYOR'S STATEMENT

This Corner Record was prepared by me or under my direction in conformance with  
 the Professional Land Surveyors' Act on MARCH 17, 2020  
 Signed *Zachary C. Wong* P.L.S. or R.C.E. No. LS 7600



### COUNTY SURVEYOR'S STATEMENT

This Corner Record was received March 18, 2020  
 and examined and filed April 16, 2020  
 Signed *James E. Hart* P.L.S. or R.C.E. No. 8657  
 Title County Surveyor



County Surveyor's Comment

**LEGEND:**

C.O.S. CITY OF STOCKTON  
 DOC. DOCUMENT  
 FD. FOUND  
 PM PARCEL MAP, BOOK-PAGE  
 RF. REFERENCE  
 RS RECORD OF SURVEY, BOOK-PAGE

- ⊙ FOUND C.O.S. MONUMENT BOX
- FOUND CHISELED CROSS (C)
- ▲ FOUND PK NAIL AND WASHER (C)
- △ SET PK NAIL AND WASHER TAGGED L.S 7600.
- SET CHISELED CROSS W/ BRASS TAG L.S. 7600

**REFERENCES:**

- (A) PM 10-59
- (B) RS 35-5
- (C) "ALTA/NSPS LAND TITLE SURVEY MAP" - 1505 E. HAMMER LANE, STOCKTON, CA 95210. DATED 6/10/2016 BY MSL ENGINEERING, INC. (UNRECORDED)
- (D) DOC. #2002-192678
- (E) CORNER RECORD 20-35

ALL REFERENCES ARE SAN JOAQUIN COUNTY RECORDS, UNLESS OTHERWISE NOTED.

**BASIS OF BEARINGS:**

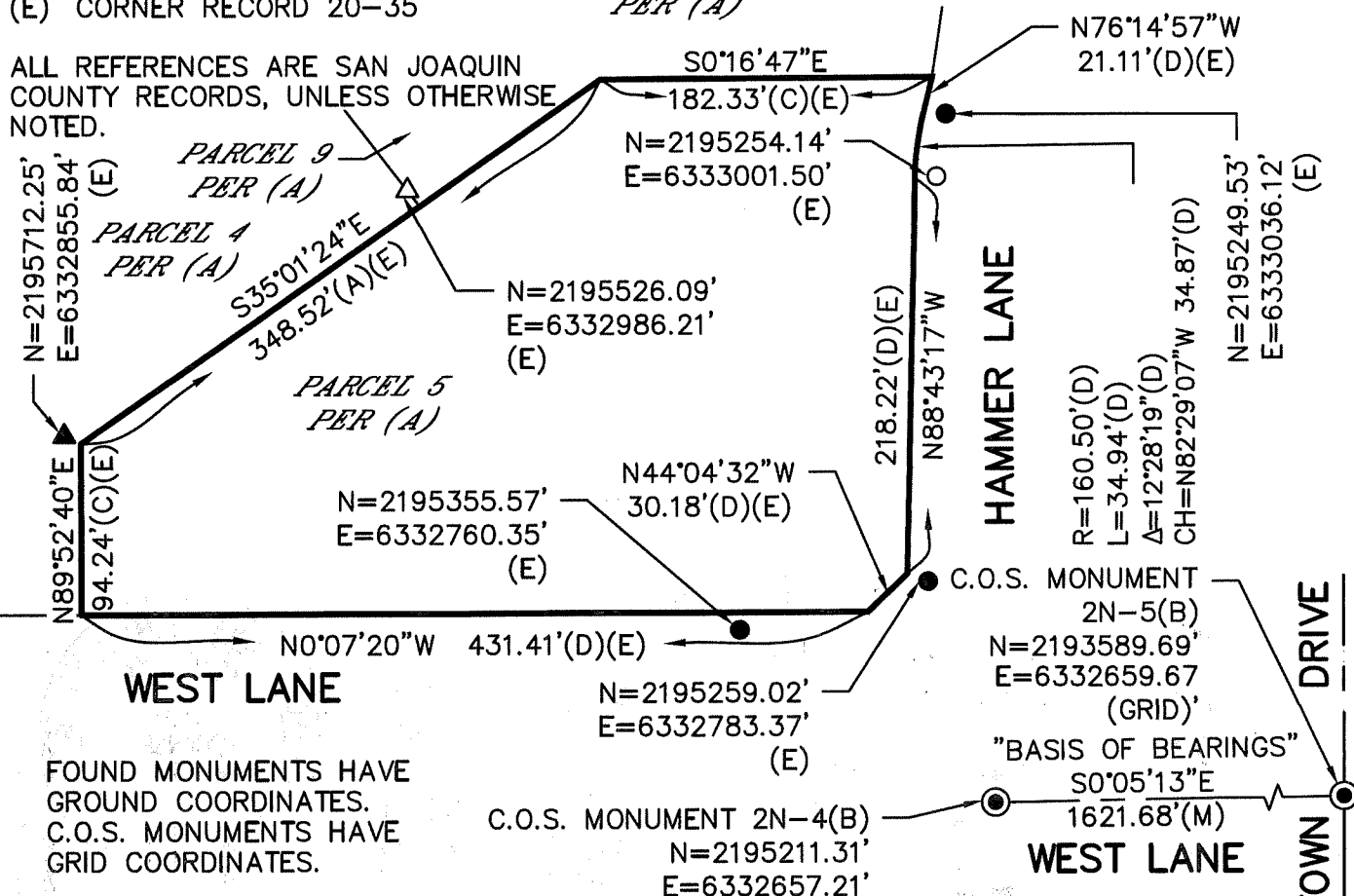
BEARINGS, DISTANCES, AND COORDINATES ARE BASED ON THE CALIFORNIA COORDINATE SYSTEM 83, ZONE 3 (1991.35). A LINE BETWEEN CITY OF STOCKTON MONUMENTS "2N-4" AND "2N-5" BEARS S0°05'13"E AS CALCULATED FROM COORDINATES SHOWN ON CITY OF STOCKTON TRAVERSE CONTROL MONUMENT SURVEYS, FILED FOR RECORD IN BOOK 35 OF SURVEYS, AT PAGE 5, SAN JOAQUIN COUNTY RECORDS.

**DESCRIPTION:**

THIS DOCUMENT IS FOR THE PURPOSE OF REESTABLISHING OBLITERATED MONUMENTS.

RETRACEMENT SURVEY WILL DETERMINE VALIDITY OF MONUMENT LOCATIONS. SET MONUMENT TIES TO EXISTING MONUMENTS.

PARCEL 6  
 PER (A)



FOUND MONUMENTS HAVE GROUND COORDINATES.  
 C.O.S. MONUMENTS HAVE GRID COORDINATES.

**WONG ENGINEERS, INC.**  
 PLANNING ENGINEERING SURVEYING  
 4578 FEATHER RIVER DRIVE, SUITE A  
 STOCKTON, CALIFORNIA (209) 476-0011  
 MARCH 17, 2020 2 OF 2

