

CORNER RECORD

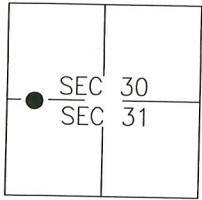
Agency Index CR-20-68

Document Number _____

City of UNINCORPORATED

County of SAN JOAQUIN, California

Brief Legal Description SET MONUMENT NEAR SOUTHEAST CORNER OF PARCEL A AS SHOWN ON 6-PM-66



T4N/R8E

CORNER TYPE

- Government Corner Control
 Meander Property
 Rancho Other

Date of Survey 12-24-2019

COORDINATES (Optional)

- N. _____ E. _____
 Elevation _____
 Units Metric U.S. Survey Foot
 Horizontal Datum _____
 Zone _____ Epoch Date _____
 Vertical Datum: _____
 Complies with Public Resources Code §§8801-8819
 Complies with Public Resources Code §§8890-8902

PLS Act Ref.: 8765(d) 8771 8773 Other: _____

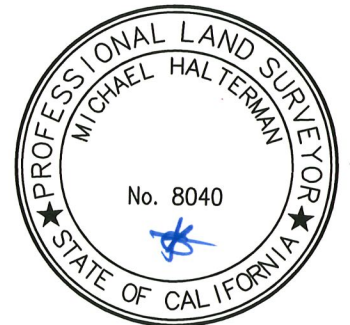
Corner/Monument: Left as found Established Rebuilt Pre-Construction
 Found and tagged Reestablished Referenced Post-Construction

Narrative of corner identified and monument as found and set or reset:
 See sheet #2 for description(s):

SURVEYOR'S STATEMENT

This Corner Record was prepared by me or under my direction in conformance with
 the Professional Land Surveyor's Act on 10 February, 2020

Signed [Signature] P.L.S. or R.C.E. No.: 8040



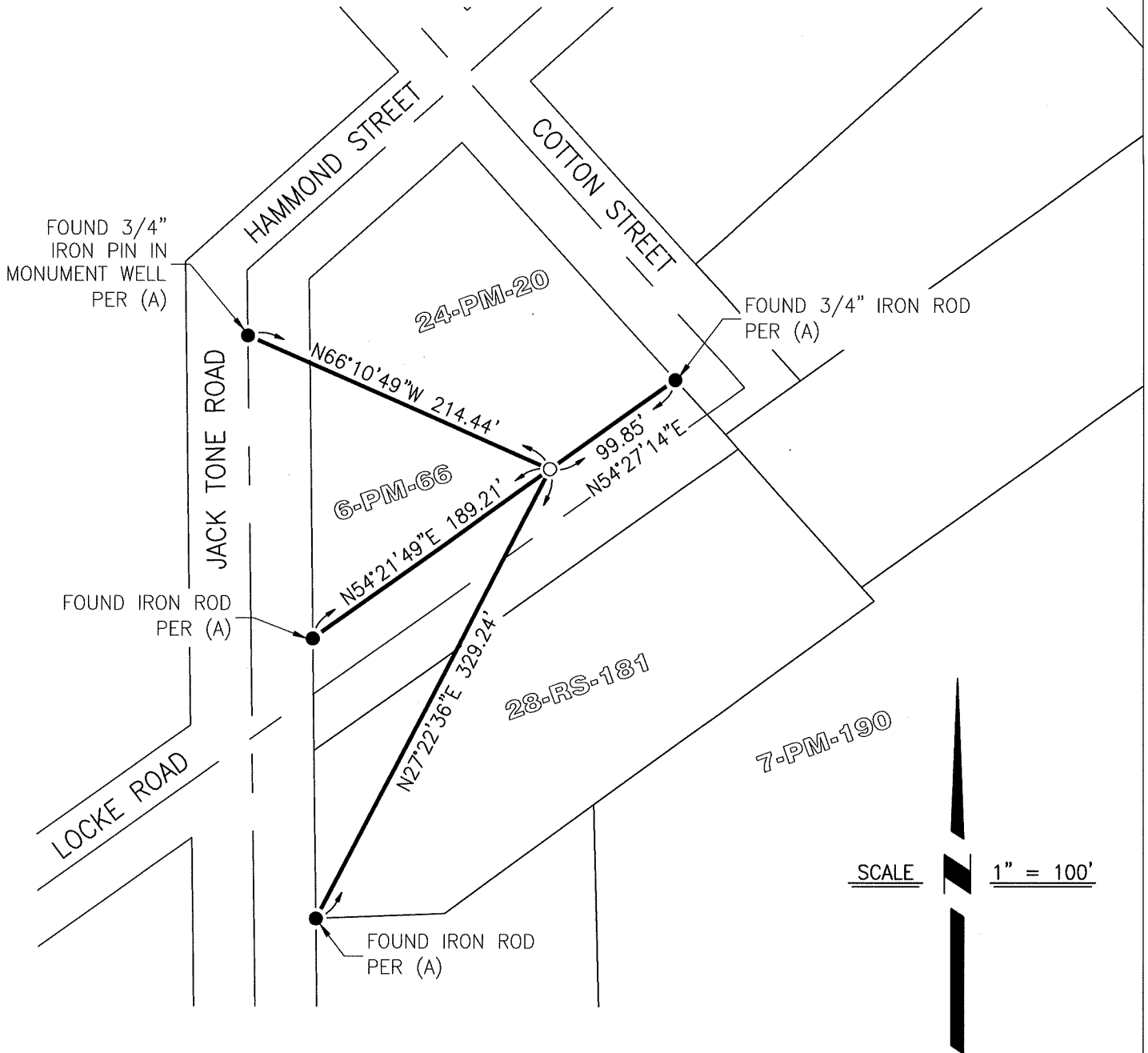
COUNTY SURVEYOR'S STATEMENT

This Corner Record was received March 3, 2020 and examined
 and filed March 24, 2020

Signed James E. Hart P.L.S. or R.C.E. No.: 8657
 Title County Surveyor

County Surveyor's Comment _____





LEGEND:

- FOUND AND ACCEPTED MONUMENT AS NOTED
- SET NAIL WITH BRASS TAG
STAMPED LS 8040 IN CONCRETE
- RS RECORD OF SURVEY
- PM PARCEL MAP
- CR CORNER RECORD

REFERENCES:

(A) CORNER RECORD 19-79, SAN JOAQUIN COUNTY SURVEYOR'S RECORDS.