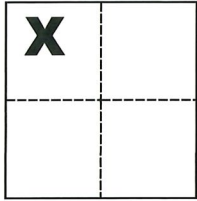


CORNER RECORD

Agency Index CR-20-60
 Document Number _____

City of Stockton County of San Joaquin, California

Brief Legal Description Southeasterly corner of Lot 144, per M. & P. 21-24, S.J.C.R.



Sec. A, C.M. Weber Grant

CORNER TYPE

- Government Corner Control
 Meander Property
 Rancho Other

Date of Survey January 20, 2020

COORDINATES (Optional)

N. _____ E. _____
 Elevation _____
 Units Metric U.S. Survey Foot
 Horizontal Datum _____
 Zone _____ Epoch Date _____
 Vertical Datum _____

- Complies with Public Resources Code §§8801-8819
 Complies with Public Resources Code §§8890-8902

PLS Act Ref.: 8765(d) 8771 8773 Other:

Corner/Monument: Left as found Established Rebuilt Pre-Construction
 Found and tagged Reestablished Referenced Post-Construction

Narrative of corner identified and monument as found, set, reset, replaced, or removed:

See sheet #2 for description(s):

SURVEYOR'S STATEMENT

This Corner Record was prepared by me or under my direction in conformance with the Professional Land Surveyors' Act on Jan. 27, 2020

Signed Michael L. Quaratao P.L.S. or R.C.E. No. L.S. 4450



COUNTY SURVEYOR'S STATEMENT

This Corner Record was received March 3, 2020

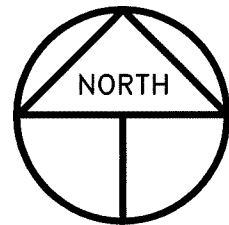
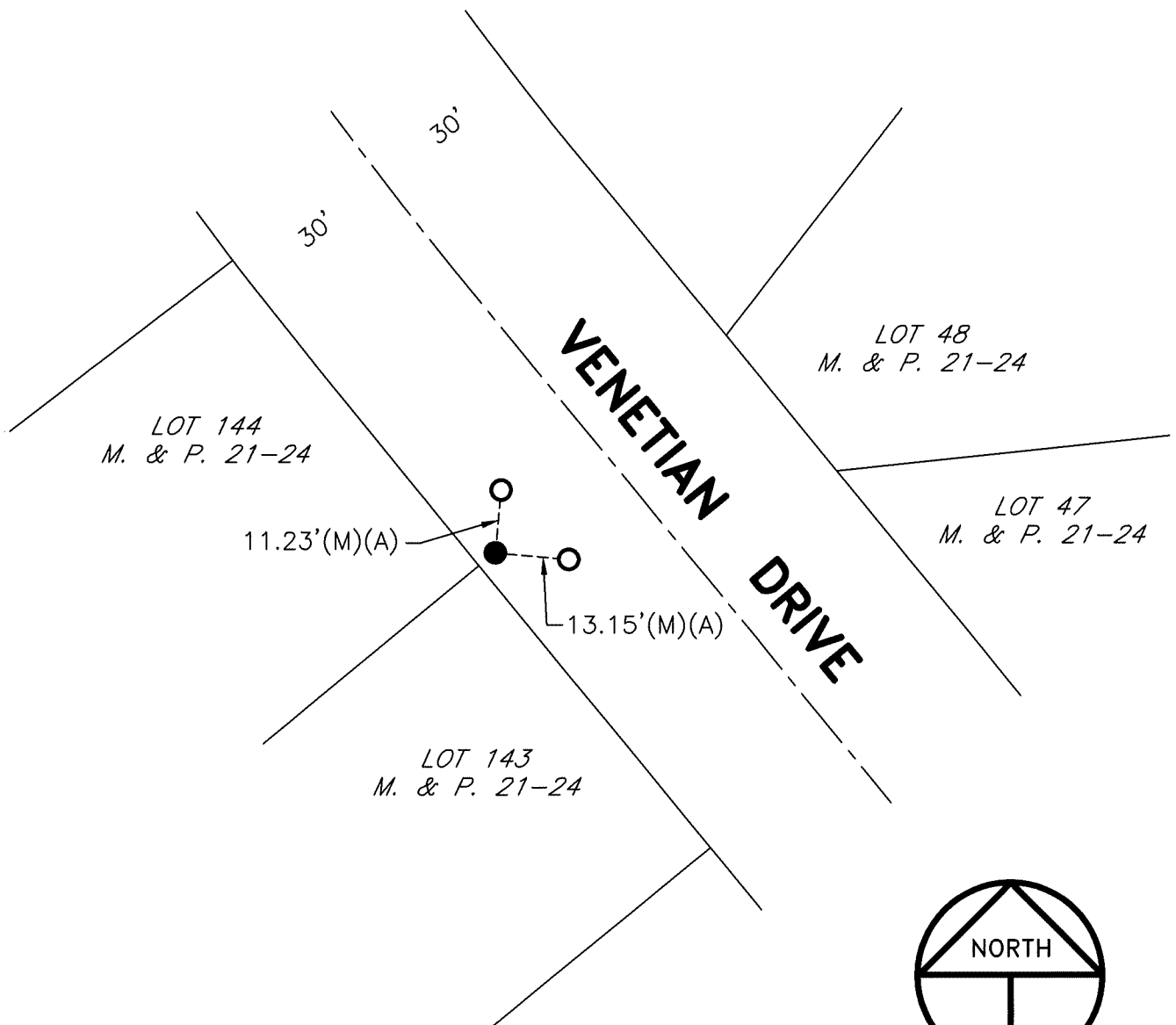
and examined and filed March 24, 2020

Signed James E. Hart P.L.S. or R.C.E. No. 8657

Title County Surveyor

County Surveyor's Comment




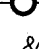


SCALE: 1" = 30'
2019-239 - POST

REFERENCE

(A) C.R.-20-09, S.J.C.S.R.

LEGEND

-  INDICATES FOUND VERY LARGE AND CRUDE CHISELED CROSS PER (A)
-  INDICATES FOUND MAG NAIL AND TAG STAMPED LS 4450 PER (A)
- M. & P. INDICATES MAPS AND PLATS, VOLUME AND PAGE, S.J.C.R.
- S.J.C.R. INDICATES SAN JOAQUIN COUNTY RECORDS
- (M) INDICATES MEASURED ON THIS SURVEY
- C.R. INDICATES CORNER RECORD, S.J.C.S.R.
- S.J.C.S.R. INDICATES SAN JOAQUIN COUNTY SURVEYOR'S RECORDS