

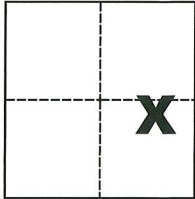
CORNER RECORD

Agency Index CR-20-57

Document Number _____

City of Stockton County of San Joaquin, California

Brief Legal Description Centerline of Stanfield Court per M. & P. 23-57 and M. & P. 23-85, S.J.C.R.



CORNER TYPE

- Government Corner Control
- Meander Property
- Rancho Other

Date of Survey December 30, 2019

COORDINATES (Optional)

N. _____ E. _____

Elevation _____

Units Metric U.S. Survey Foot

Horizontal Datum _____

Zone _____ Epoch Date _____

Vertical Datum _____

Complies with Public Resources Code §§8801-8819

Complies with Public Resources Code §§8890-8902

Sec. 7, T.2N., R.6E.,
M.D.B. & M.

PLS Act Ref.: 8765(d) 8771 8773 Other:

Corner/Monument: Left as found Established Rebuilt Pre-Construction

Found and tagged Reestablished Referenced Post-Construction

Narrative of corner identified and monument as found, set, reset, replaced, or removed:

See sheet #2 for description(s):

SURVEYOR'S STATEMENT

This Corner Record was prepared by me or under my direction in conformance with

the Professional Land Surveyors' Act on JAN 9, 2020

Signed Michael L. Quartaroli P.L.S. or R.C.E. No. L.S. 4450



COUNTY SURVEYOR'S STATEMENT

This Corner Record was received February 20, 2020

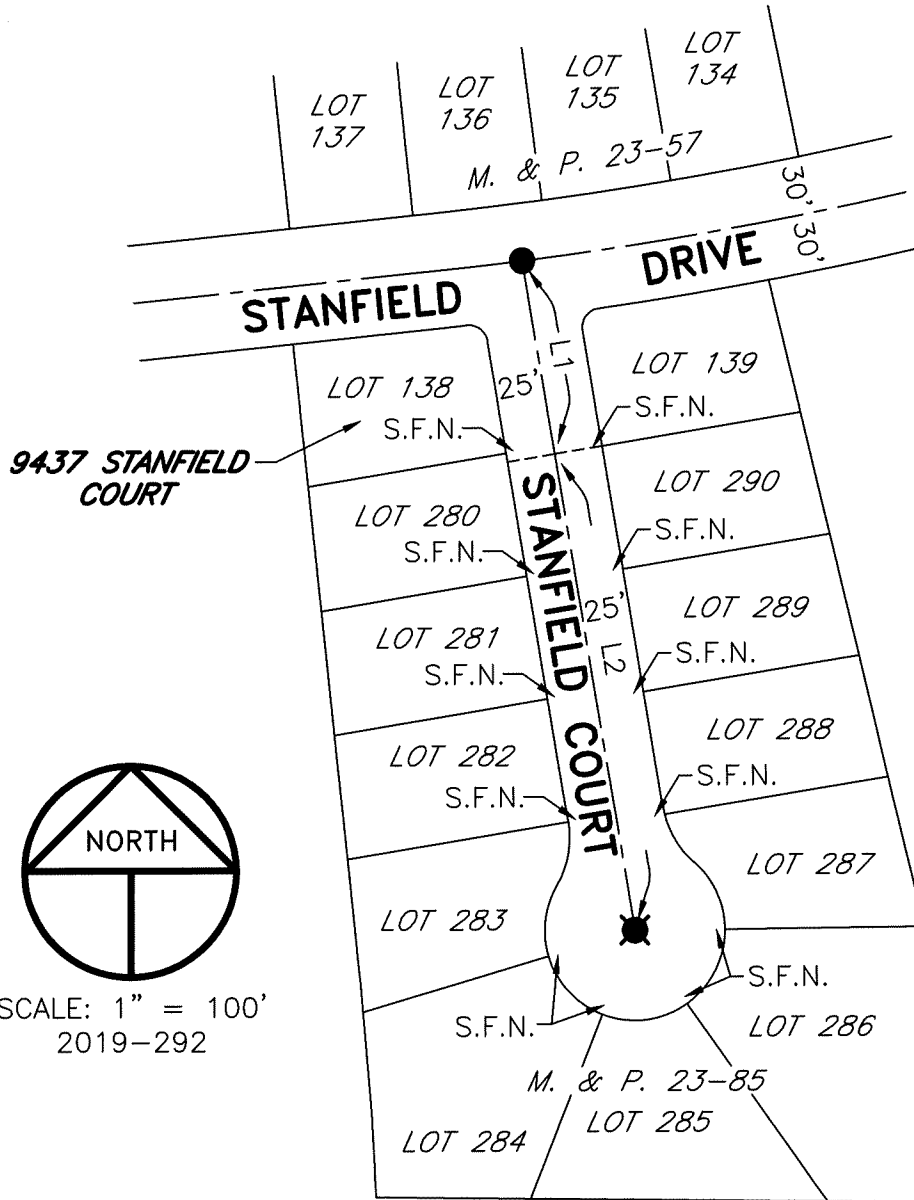
and examined and filed March 10, 2020

Signed James E. Hart P.L.S. or R.C.E. No. 8657

Title County Surveyor

County Surveyor's Comment





REFERENCES

- (A) M. & P. 23-57, S.J.C.R.
- (B) M. & P. 23-85, S.J.C.R.

LINE TABLE

LINE	BEARING	DISTANCE
L1	S09°26'00"E (A)	102.00'(A)
L2	S09°26'00"E (B)	252.00'(B)

LEGEND

- INDICATES FOUND 3/4" IRON PIN IN MONUMENT BOX PER (A)
- ⊗ INDICATES FOUND 3/4" IRON PIN IN MONUMENT BOX PER (B)
- M. & P. INDICATES MAPS AND PLATS, VOLUME AND PAGE, S.J.C.R.
- S.J.C.R. INDICATES SAN JOAQUIN COUNTY RECORDS
- S.F.N. INDICATES SEARCHED FOUND NOTHING AT LOT CORNER AND FOR POSSIBLE WITNESS CORNER (CHISELED CROSS)