

# CORNER RECORD

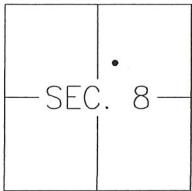
Agency Index CR-20-48

Document Number \_\_\_\_\_

City of STOCKTON

County of SAN JOAQUIN, California

Brief Legal Description MONUMENTS AT LOT 344 PER 22-M&P-74, S.J.C.R.



T2N/R6E

### CORNER TYPE

- Government Corner  Control   
 Meander  Property   
 Rancho  Other

Date of Survey OCTOBER 22, 2019

### COORDINATES (Optional)

- N. \_\_\_\_\_ E. \_\_\_\_\_  
 Elevation \_\_\_\_\_  
 Units Metric  U.S. Survey Foot   
 Horizontal Datum \_\_\_\_\_  
 Zone \_\_\_\_\_ Epoch Date \_\_\_\_\_  
 Vertical Datum: \_\_\_\_\_  
 Complies with Public Resources Code §§8801-8819  
 Complies with Public Resources Code §§8890-8902

PLS Act Ref.:  8765(d)  8771  8773 Other: \_\_\_\_\_

Corner/Monument:  Left as found  Established  Rebuilt  Pre-Construction  
 Found and tagged  Reestablished  Referenced  Post-Construction

Narrative of corner identified and monument as found, set, reset, replaced, or removed:  
 See sheet #2 for description(s):

### SURVEYOR'S STATEMENT

This Corner Record was prepared by me or under my direction in conformance with  
 the Professional Land Surveyor's Act on JANUARY 29<sup>TH</sup>, 2020

Signed [Signature] P.L.S. or R.C.E. No.: 8366



### COUNTY SURVEYOR'S STATEMENT

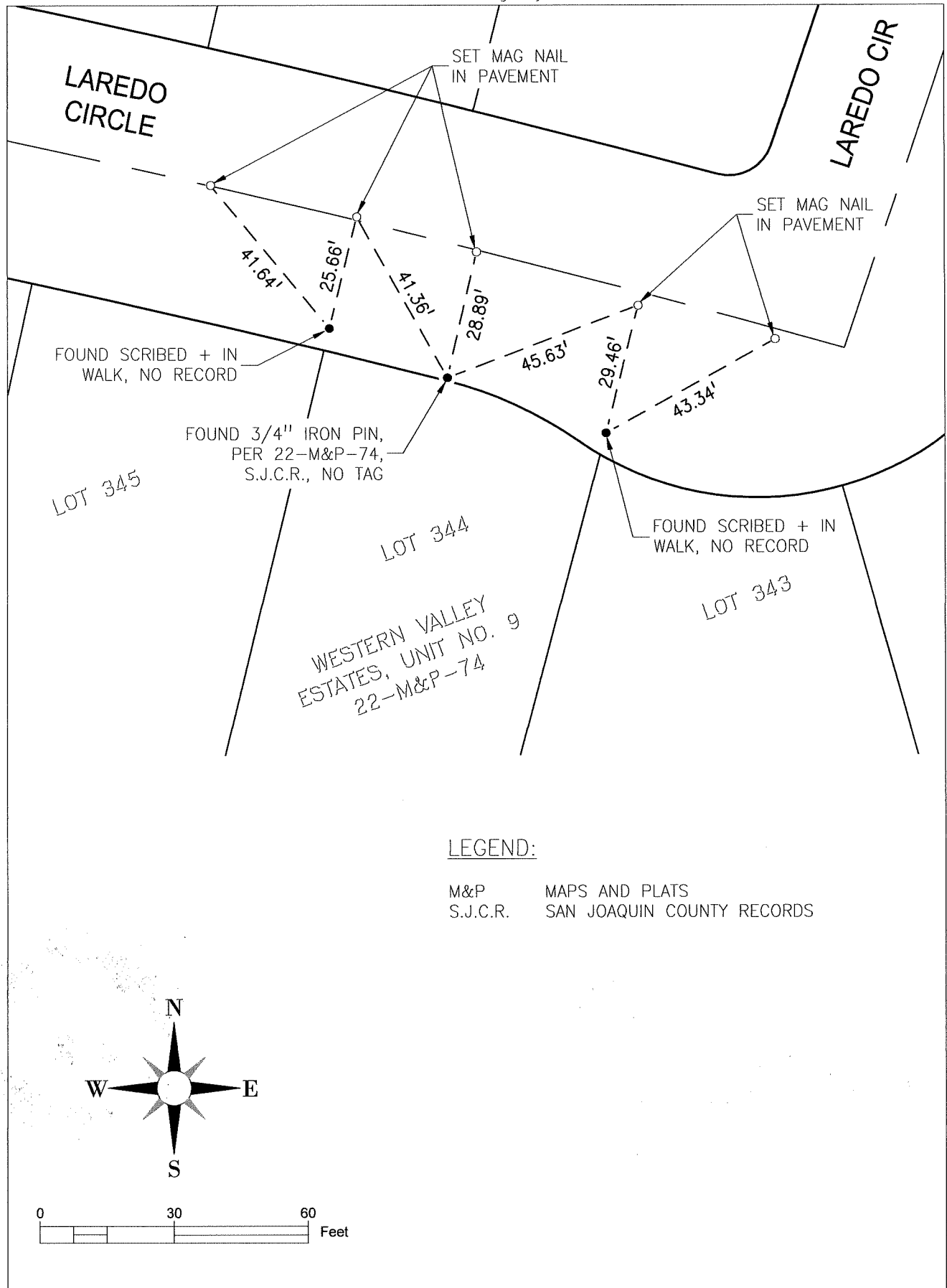
This Corner Record was received February 5, 2020 and examined  
 and filed February 27, 2020

Signed James E. Hart P.L.S. or R.C.E. No.: 8657

Title County Surveyor

County Surveyor's Comment \_\_\_\_\_





LEGEND:

M&P      MAPS AND PLATS  
 S.J.C.R.    SAN JOAQUIN COUNTY RECORDS

