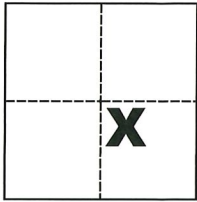


CORNER RECORD

Agency Index CR-20-42
Document Number _____

City of _____ County of San Joaquin, California
Brief Legal Description Southwest corner of Lot 2 per M. & P. 28-89, S.J.C.R.



CORNER TYPE

Government Corner Control
Meander Property
Rancho Other

COORDINATES (Optional)

N. _____ E. _____
Elevation _____
Units Metric U.S. Survey Foot
Horizontal Datum _____
Zone _____ Epoch Date _____
Vertical Datum _____

Sec. 56, C.M. Weber Grant

Complies with Public Resources Code §§8801-8819
 Complies with Public Resources Code §§8890-8902

PLS Act Ref.: 8765(d) 8771 8773 Other:
Corner/Monument: Left as found Established Rebuilt Pre-Construction
 Found and tagged Reestablished Referenced Post-Construction

Narrative of corner identified and monument as found, set, reset, replaced, or removed:
 See sheet #2 for description(s):

SURVEYOR'S STATEMENT

This Corner Record was prepared by me or under my direction in conformance with
the Professional Land Surveyors' Act on Jan. 27, 2020
Signed Michael L. Quarantoli P.L.S. or R.C.E. No. L.S. 4450

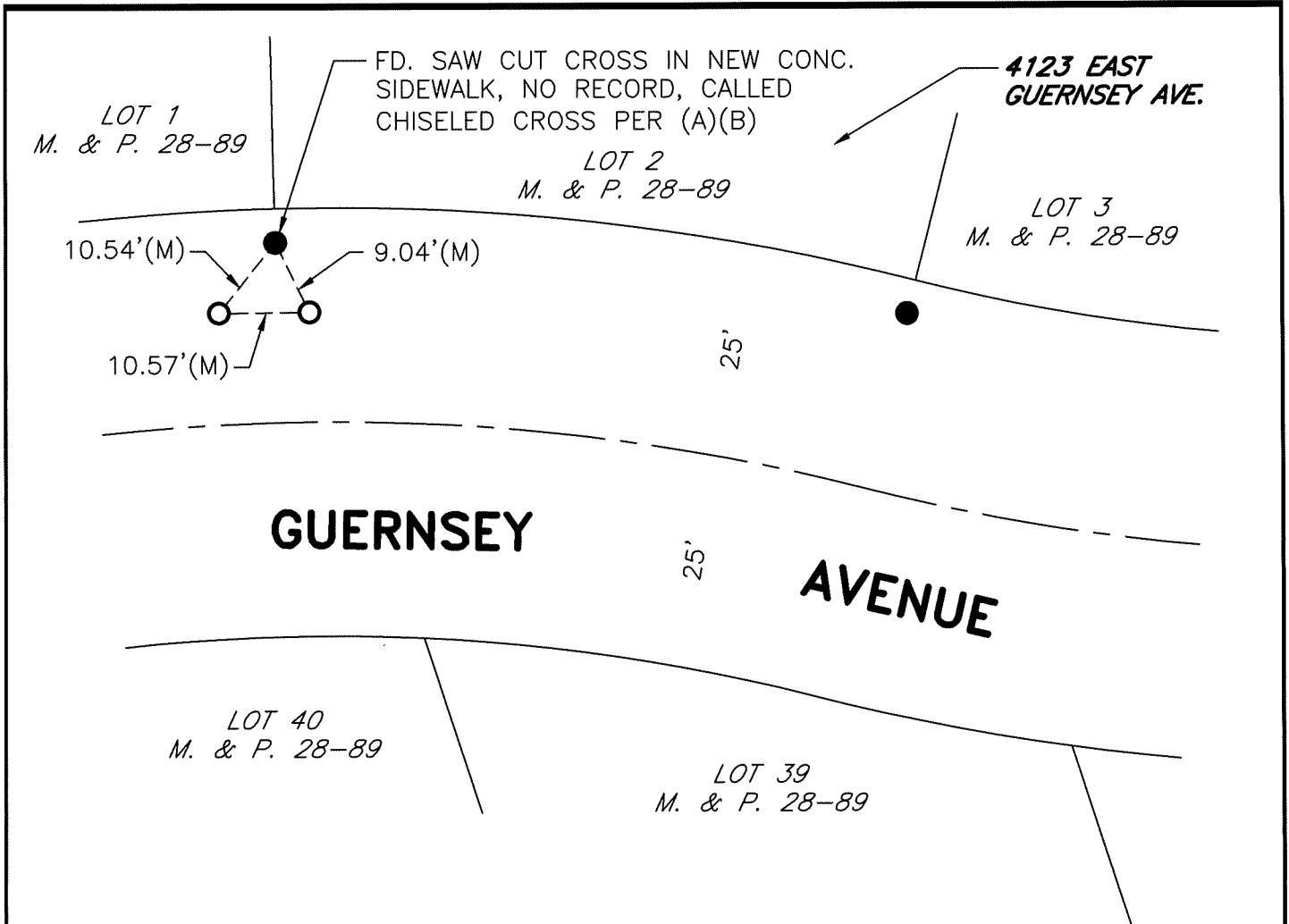


COUNTY SURVEYOR'S STATEMENT

This Corner Record was received January 30, 2020
and examined and filed February 12, 2020
Signed James E. Hart P.L.S. or R.C.E. No. 8657
Title County Surveyor

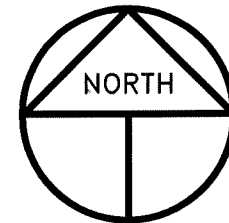


County Surveyor's Comment



REFERENCES

- (A) M. & P. 28-89, S.J.C.R.
- (B) CR-11-222, S.J.C.S.R.



SCALE: 1" = 20'
2019-268

LEGEND

- INDICATES FOUND VERY LARGE AND CRUDE CHISELED CROSS PER (A), UNLESS OTHERWISE NOTED.
- INDICATES SET CONCRETE NAIL AND TAG STAMPED LS 4450
- FD. INDICATES FOUND ON THIS SURVEY
- M. & P. INDICATES MAPS AND PLATS, VOLUME AND PAGE, S.J.C.R.
- CR INDICATES CORNER RECORD, S.J.C.S.R.
- S.J.C.R. INDICATES SAN JOAQUIN COUNTY RECORDS
- S.J.C.S.R. INDICATES SAN JOAQUIN COUNTY SURVEYOR'S RECORDS
- (M) INDICATES MEASURED ON THIS SURVEY