

CORNER RECORD

Agency Index CR-20-40

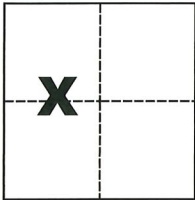
Document Number _____

City of Stockton County of San Joaquin, California

Brief Legal Description Centerline of Rion Way and Bancroft Way per M. & P. 24-60, S.J.C.R.

CORNER TYPE

COORDINATES (Optional)



Government Corner Control
Meander Property
Rancho Other

N. _____ E. _____
Elevation _____
Units Metric U.S. Survey Foot
Horizontal Datum _____
Zone _____ Epoch Date _____
Vertical Datum _____

Date of Survey December 6, 2019

Complies with Public Resources Code §§8801-8819
 Complies with Public Resources Code §§8890-8902

Sec. 17, T.2N., R.6E.,
M.D.B. & M.

PLS Act Ref.: 8765(d) 8771 8773 Other:
Corner/Monument: Left as found Established Rebuilt Pre-Construction
 Found and tagged Reestablished Referenced Post-Construction

Narrative of corner identified and monument as found, set, reset, replaced, or removed:

See sheet #2 for description(s):

SURVEYOR'S STATEMENT

This Corner Record was prepared by me or under my direction in conformance with

the Professional Land Surveyors' Act on JAN. 27, 2020

Signed Michael L. Quantz P.L.S. or R.C.E. No. L.S. 4450



COUNTY SURVEYOR'S STATEMENT

This Corner Record was received January 30, 2020

and examined and filed February 12, 2020

Signed James E. Hart P.L.S. or R.C.E. No. 8657

Title County Surveyor

County Surveyor's Comment _____

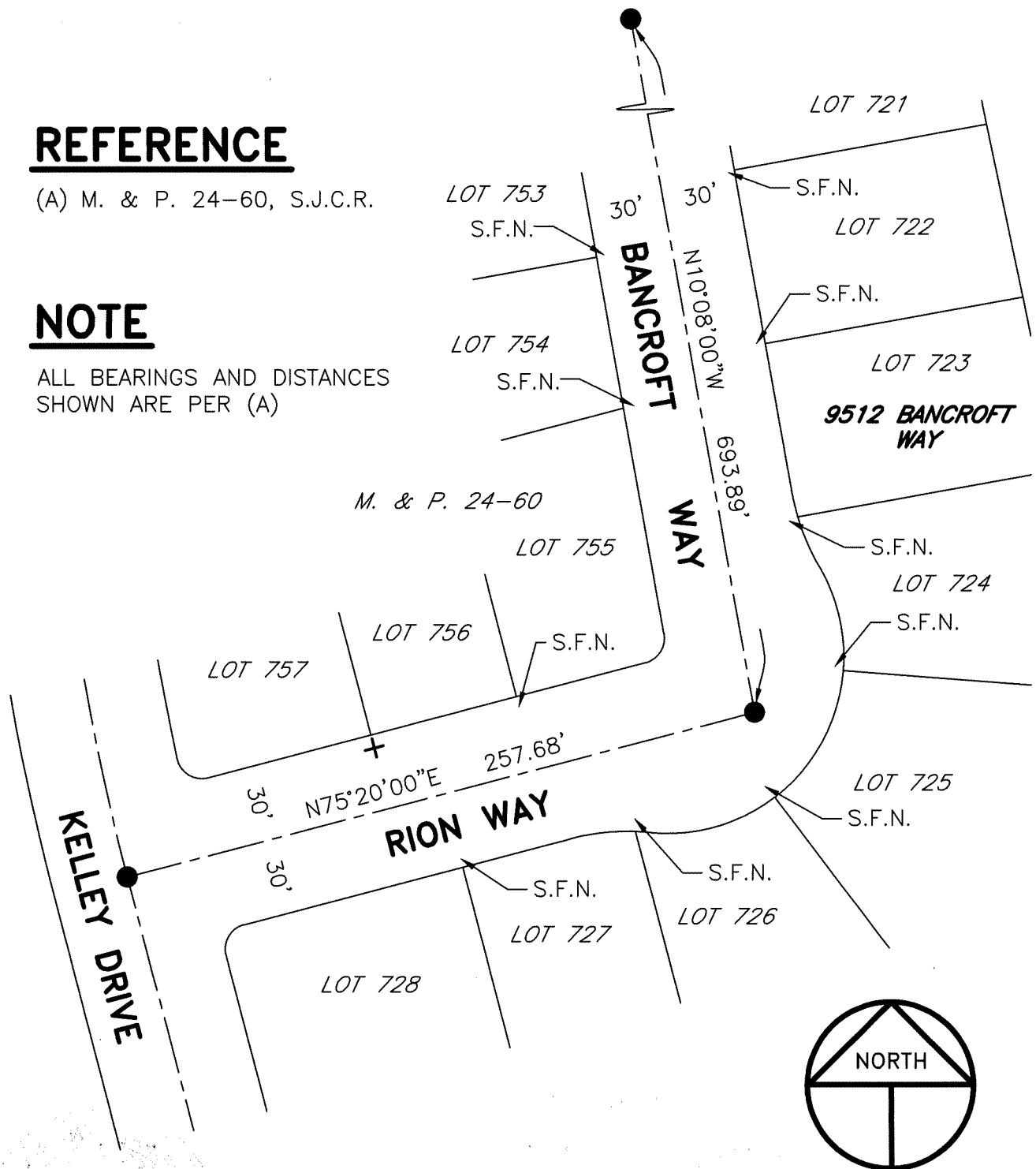


REFERENCE

(A) M. & P. 24-60, S.J.C.R.

NOTE

ALL BEARINGS AND DISTANCES SHOWN ARE PER (A)



LEGEND

- INDICATES FOUND 3/4" IRON PIN IN MONUMENT BOX PER (A)
- +
- M. & P. INDICATES MAPS AND PLATS, VOLUME AND PAGE, S.J.C.R.
- S.J.C.R. INDICATES SAN JOAQUIN COUNTY RECORDS
- S.F.N. INDICATES SEARCHED FOUND NOTHING AT LOT CORNER AND FOR POSSIBLE WITNESS CORNER (CHISELED CROSS)

