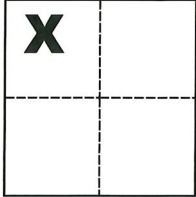


# CORNER RECORD

Agency Index CR-20-38

Document Number \_\_\_\_\_

City of Stockton County of San Joaquin, CaliforniaBrief Legal Description Centerline of Antoine Court per M. & P. 22-2, S.J.C.R.**CORNER TYPE****COORDINATES (Optional)**

Government Corner  Control   
 Meander  Property   
 Rancho  Other

N. \_\_\_\_\_ E. \_\_\_\_\_

Elevation \_\_\_\_\_

Units Metric  U.S. Survey Foot 

Horizontal Datum \_\_\_\_\_

Zone \_\_\_\_\_ Epoch Date \_\_\_\_\_

Date of Survey November 11, 2019

Vertical Datum \_\_\_\_\_

 Complies with Public Resources Code §§8801-8819 Complies with Public Resources Code §§8890-8902Sec. 17, T.2N., R.6E.,  
M.D.B. & M.PLS Act Ref.:  8765(d)  8771  8773  Other:Corner/Monument:  Left as found  Established  Rebuilt  Pre-Construction Found and tagged  Reestablished  Referenced  Post-Construction

Narrative of corner identified and monument as found, set, reset, replaced, or removed:

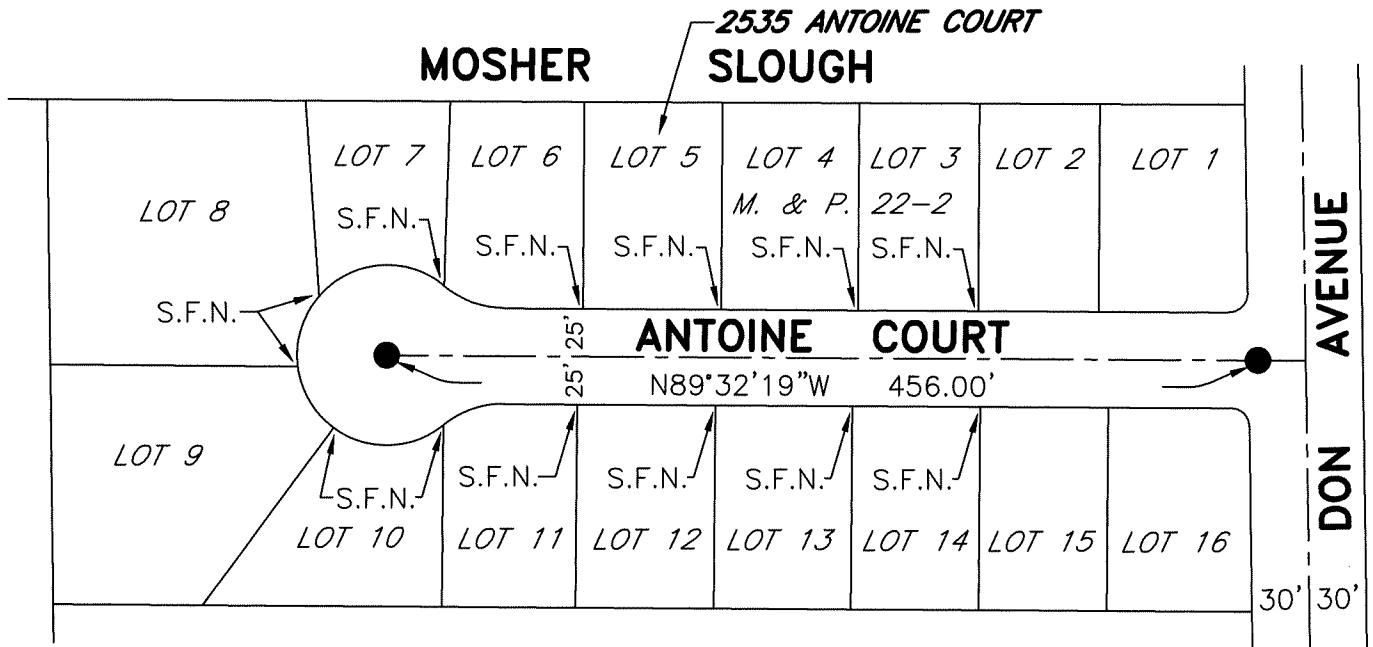
 See sheet #2 for description(s):**SURVEYOR'S STATEMENT**

This Corner Record was prepared by me or under my direction in conformance with

the Professional Land Surveyors' Act on Jan. 27, 2020Signed Michael L. Quintero P.L.S. or R.C.E. No. L.S. 4450**COUNTY SURVEYOR'S STATEMENT**This Corner Record was received January 30, 2020and examined and filed February 12, 2020Signed James E. Hart P.L.S. or R.C.E. No. 8657Title County Surveyor

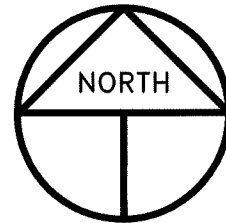
County Surveyor's Comment \_\_\_\_\_





### NOTE

ALL BEARINGS AND DISTANCES SHOWN ARE PER (A)



SCALE: 1" = 100'  
2019-252

### LEGEND

- INDICATES FOUND 3/4" IRON PIPE IN MONUMENT BOX PER (A)
- M. & P. INDICATES MAPS AND PLATS, VOLUME AND PAGE, S.J.C.R.
- S.J.C.R. INDICATES SAN JOAQUIN COUNTY RECORDS
- S.F.N. INDICATES SEARCHED FOUND NOTHING AT LOT CORNER AND FOR POSSIBLE WITNESS CORNER (CHISELED CROSS)

### REFERENCE

(A) M. & P. 22-2, S.J.C.R.