

CORNER RECORD

Agency Index CR-20-37

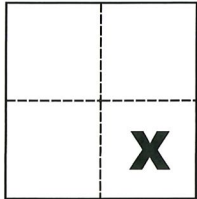
Document Number _____

City of Stockton County of San Joaquin, California

Brief Legal Description Most Westerly corner of Lot 184 and Most Easterly corner of Lot 169, per M. & P. 21-75, S.J.C.R.

CORNER TYPE

COORDINATES (Optional)



Government Corner Control
Meander Property
Rancho Other

N. _____ E. _____

Elevation _____

Units Metric U.S. Survey Foot

Horizontal Datum _____

Zone _____ Epoch Date _____

Date of Survey November 13, 2019

Vertical Datum _____

Complies with Public Resources Code §§8801-8819

Complies with Public Resources Code §§8890-8902

Sec. A, C.M. Weber Grant

PLS Act Ref.: 8765(d) 8771 8773 Other:

Corner/Monument: Left as found Established Rebuilt Pre-Construction

Found and tagged Reestablished Referenced Post-Construction

Narrative of corner identified and monument as found, set, reset, replaced, or removed:

See sheet #2 for description(s):

SURVEYOR'S STATEMENT

This Corner Record was prepared by me or under my direction in conformance with

the Professional Land Surveyors' Act on JAN. 27, 2020

Signed Michael L. Quaranta P.L.S. or R.C.E. No. L.S. 4450



COUNTY SURVEYOR'S STATEMENT

This Corner Record was received January 30, 2020

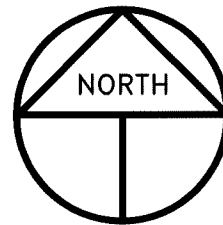
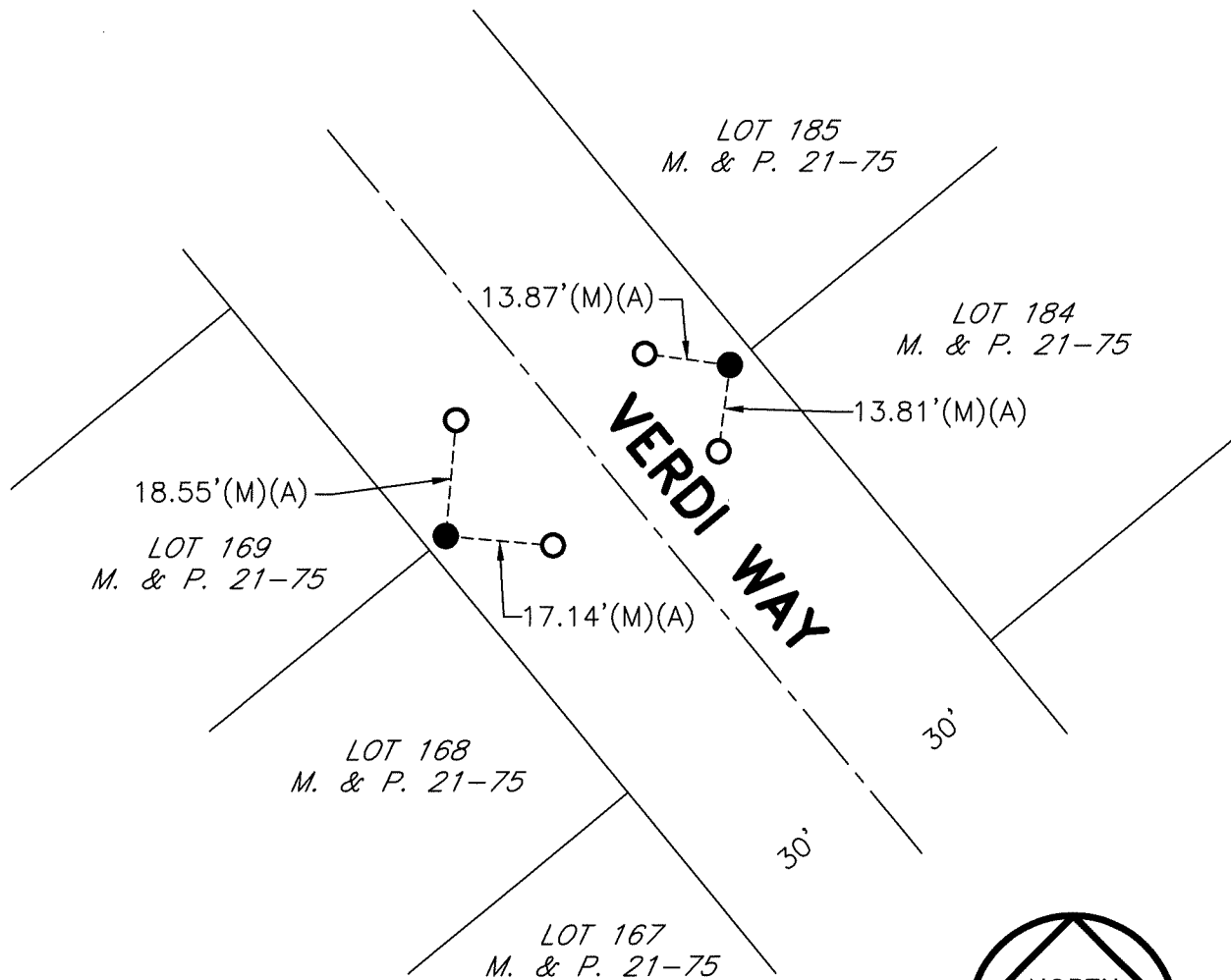
and examined and filed February 12, 2020

Signed James E. Hart P.L.S. or R.C.E. No. 8657

Title County Surveyor

County Surveyor's Comment







SCALE: 1" = 30'
2019-234 - POST

REFERENCE

(A) C.R.-20-11, S.J.C.S.R.

LEGEND

-  INDICATES FOUND CHISELED CROSS PER (A)
-  INDICATES FOUND MAG NAIL PER (A) WITH TAG STAMPED LS 4450
- M. & P. INDICATES MAPS AND PLATS, VOLUME AND PAGE, S.J.C.R.
- S.J.C.R. INDICATES SAN JOAQUIN COUNTY RECORDS
- (M) INDICATES MEASURED ON THIS SURVEY
- C.R. INDICATES CORNER RECORD, S.J.C.S.R.
- S.J.C.S.R. INDICATES SAN JOAQUIN COUNTY SURVEYOR'S RECORDS