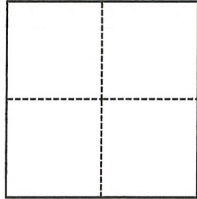


CORNER RECORD

Agency Index CR-20-35
 Document Number _____

City of STOCKTON County of SAN JOAQUIN, California
 Brief Legal Description PARCEL 5 PER P.M. 10-59, N.W. 1/4 OF SEC. 14, T.2 N., R. 6 E., M.D.B. & M.

CORNER TYPE



- Government Corner Control
 Meander Property
 Rancho Other

Date of Survey MARCH 27, 2018

COORDINATES (Optional)

N. _____ E. _____
 Elevation _____
 Units Metric U.S. Survey Foot
 Horizontal Datum _____
 Zone _____ Epoch Date _____
 Vertical Datum _____
 Complies with Public Resources Code §§8801-8819
 Complies with Public Resources Code §§8890-8902

PLS Act Ref.: 8765(d) 8771 8773 Other:
 Corner/Monument: Left as found Established Rebuilt Pre-Construction
 Found and tagged Reestablished Referenced Post-Construction

Narrative of corner identified and monument as found, set, reset, replaced, or removed:
 See sheet #2 for description(s):

PRE-CONSTRUCTION CORNER RECORD. THIS DOCUMENT IS FOR THE PURPOSE OF PRESERVING AND ESTABLISHING TIES TO EXISTING MONUMENTS IN THE AREA OF NEW CONSTRUCTION OF IMPROVEMENTS, AS SHOWN ON BOOK 10 OF PARCEL MAPS, PAGE 59, SAN JOAQUIN COUNTY RECORDS.

SURVEYOR'S STATEMENT

This Corner Record was prepared by me or under my direction in conformance with the Professional Land Surveyors' Act on JANUARY 22, 2020.
 Signed [Signature] P.L.S. or R.C.E. No. LS 7600



COUNTY SURVEYOR'S STATEMENT

This Corner Record was received January 24, 2020
 and examined and filed February 7, 2020.
 Signed [Signature] P.L.S. or R.C.E. No. 8657
 Title County Surveyor



County Surveyor's Comment

LEGEND:

C.O.S. CITY OF STOCKTON
 DOC. DOCUMENT
 FD. FOUND
 PM PARCEL MAP, BOOK-PAGE
 RF. REFERENCE
 RS RECORD OF SURVEY, BOOK-PAGE

● FOUND C.O.S. MONUMENT BOX
 ● FOUND CHISELED CROSS (C)
 ▲ FOUND PK NAIL AND WASHER (C)

BASIS OF BEARINGS:

BEARINGS, DISTANCES, AND COORDINATES ARE BASED ON THE CALIFORNIA COORDINATE SYSTEM 83, ZONE 3 (1991.35). A LINE BETWEEN CITY OF STOCKTON MONUMENTS "2N-4" AND "2N-5" BEARS S0°05'13"E AS CALCULATED FROM COORDINATES SHOWN ON CITY OF STOCKTON TRAVERSE CONTROL MONUMENT SURVEYS, FILED FOR RECORD IN BOOK 35 OF SURVEYS, AT PAGE 5, SAN JOAQUIN COUNTY RECORDS.

REFERENCES:

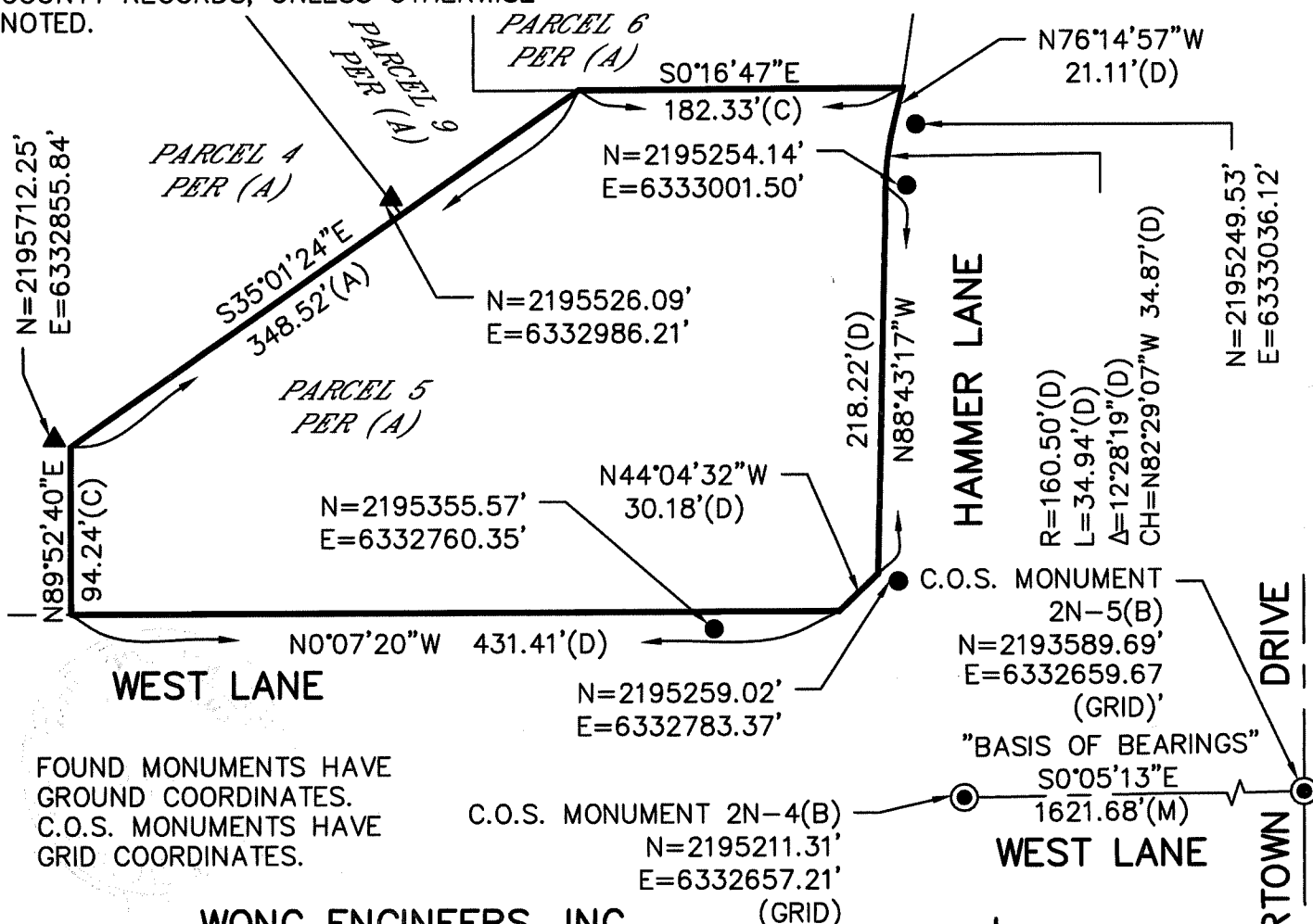
- (A) PM 10-59
- (B) RS 35-5
- (C) "ALTA/NSPS LAND TITLE SURVEY MAP" - 1505 E. HAMMER LANE, STOCKTON, CA 95210. DATED 6/10/2016 BY MSL ENGINEERING, INC. (UNRECORDED)
- (D) DOC. #2002-192678

DESCRIPTION:

THIS DOCUMENT IS FOR THE PURPOSE OF PRESERVING AND ESTABLISHING TIES TO EXISTING MONUMENTS.

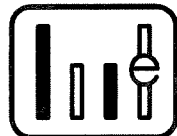
RETRACEMENT SURVEY WILL DETERMINE VALIDITY OF MONUMENT LOCATIONS. SET MONUMENT TIES TO EXISTING MONUMENTS.

ALL REFERENCES ARE SAN JOAQUIN COUNTY RECORDS, UNLESS OTHERWISE NOTED.

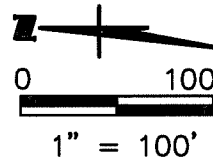


FOUND MONUMENTS HAVE GROUND COORDINATES.
 C.O.S. MONUMENTS HAVE GRID COORDINATES.

C.O.S. MONUMENT 2N-4(B)
 N=2195211.31'
 E=6332657.21'
 (GRID)



WONG ENGINEERS, INC.
 PLANNING ENGINEERING SURVEYING
 4578 FEATHER RIVER DRIVE, SUITE A
 STOCKTON, CALIFORNIA (209) 476-0011
 JANUARY 22, 2020 2 OF 2



HAMMERTOWN DRIVE