

CORNER RECORD

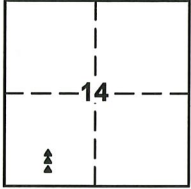
Agency Index CR-20-31

Document Number _____

City of Stockton

County of San Joaquin, California

Brief Legal Description A portion of the south 1/2 of the southwest quarter of Section 14 T.2N R.6E



SEC. 14
T.2N.,R.6E.

CORNER TYPE

- Government Corner Control
 Meander Property
 Rancho Other

Date of Survey August 2019

COORDINATES (Optional)

- N. _____ E. _____
 Elevation _____
 Units Metric U.S. Survey Foot
 Horizontal Datum _____
 Zone _____ Epoch Date _____
 Vertical Datum _____
 Complies with Public Resources Code §§8801-8819
 Complies with Public Resources Code §§8890-8902

PLS Act Ref: 8765(d) 8771 8773 Other:

Corner/Monument: Left as found Established Rebuilt Pre-Construction
 Found and tagged Reestablished Referenced Post-Construction

Narrative of corner identified and monument as found, set, reset, replaced, or removed:

See sheet #2 for description(s): Referencing three 3/4" Iron Pipes in monument wells stamped "RCE 22918" on the centerline of Montauban Ave in the City of Stockton, San Joaquin County. Five reference marks, all being nail & 13/16" brass tags stamped "RP LS 9313", were set to preserve monument locations prior to construction. See sheet 2 for details.

SURVEYOR'S STATEMENT

This Corner Record was prepared by me or under my direction in conformance with the Professional Land Surveyors' Act on January 13, 2020

Signed [Signature] P.L.S. or R.C.E. No. 9313



COUNTY SURVEYOR'S STATEMENT

This Corner Record was received January 14, 2020

and examined and filed January 29, 2020

Signed [Signature] P.L.S. or R.C.E. No. 8657

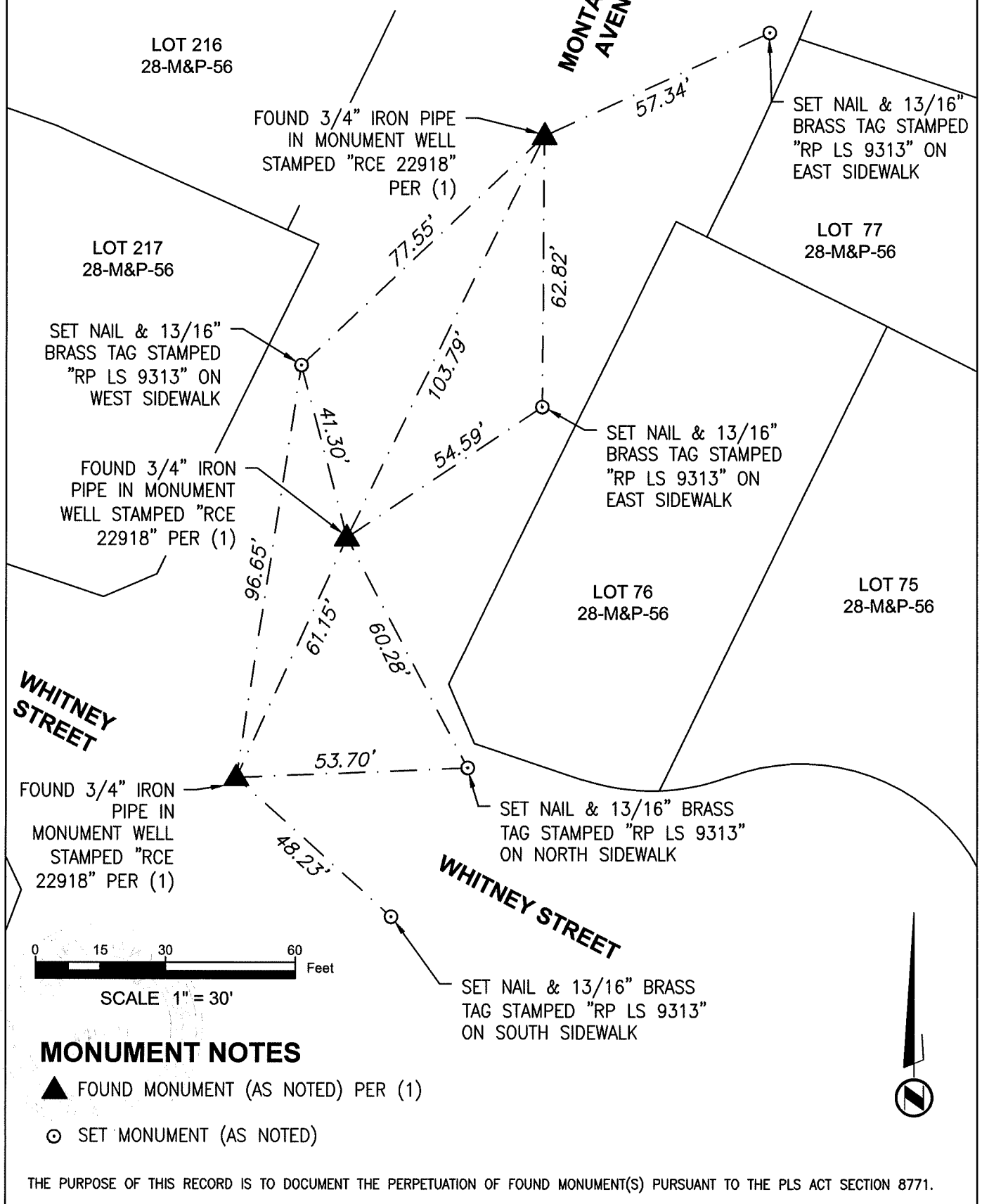
Title County Surveyor



County Surveyor's Comment _____

REFERENCE:

(1) MAPS AND PLATS, VOLUME 28, PAGE 56 OF
SAN JOAQUIN COUNTY RECORDS



MONUMENT NOTES

- ▲ FOUND MONUMENT (AS NOTED) PER (1)
- ⊙ SET MONUMENT (AS NOTED)

THE PURPOSE OF THIS RECORD IS TO DOCUMENT THE PERPETUATION OF FOUND MONUMENT(S) PURSUANT TO THE PLS ACT SECTION 8771.