

CORNER RECORD

Agency Index

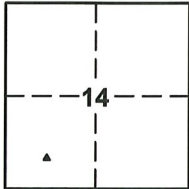
CR-20-30

Document Number

City of Stockton

County of San Joaquin, California

Brief Legal Description A portion of the south 1/2 of the southwest quarter of Section 14 T.2N R.6E



SEC. 14
T.2N.,R.6E.

CORNER TYPE

- Government Corner Control
 Meander Property
 Rancho Other

Date of Survey August 2019

COORDINATES (Optional)

- N. _____ E. _____
 Elevation _____
 Units Metric U.S. Survey Foot
 Horizontal Datum _____
 Zone _____ Epoch Date _____
 Vertical Datum _____
 Complies with Public Resources Code §§8801-8819
 Complies with Public Resources Code §§8890-8902

PLS Act Ref: 8765(d)

8771

8773

Other:

Corner/Monument: Left as found

Established

Rebuilt

Pre-Construction

Found and tagged

Reestablished

Referenced

Post-Construction

Narrative of corner identified and monument as found, set, reset, replaced, or removed:

See sheet #2 for description(s): Referencing a found 3/4" iron pipe in monument well stamped "RCE 22918" at the centerline intersection of Montauban Avenue and El Capitan Circle in the City of Stockton, San Joaquin County. Three reference marks, all being nail & 13/16" brass tags stamped "RP LS 9313", were set to preserve monument location prior to construction. See sheet 2 for details.

SURVEYOR'S STATEMENT

This Corner Record was prepared by me or under my direction in conformance with the Professional Land Surveyors' Act on January 13, 2020

Signed [Signature] P.L.S. or R.C.E. No. 9313



COUNTY SURVEYOR'S STATEMENT

This Corner Record was received January 14, 2020

and examined and filed January 29, 2020

Signed [Signature] P.L.S. or R.C.E. No. 8657

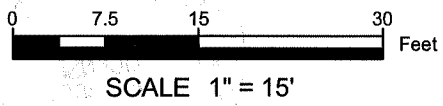
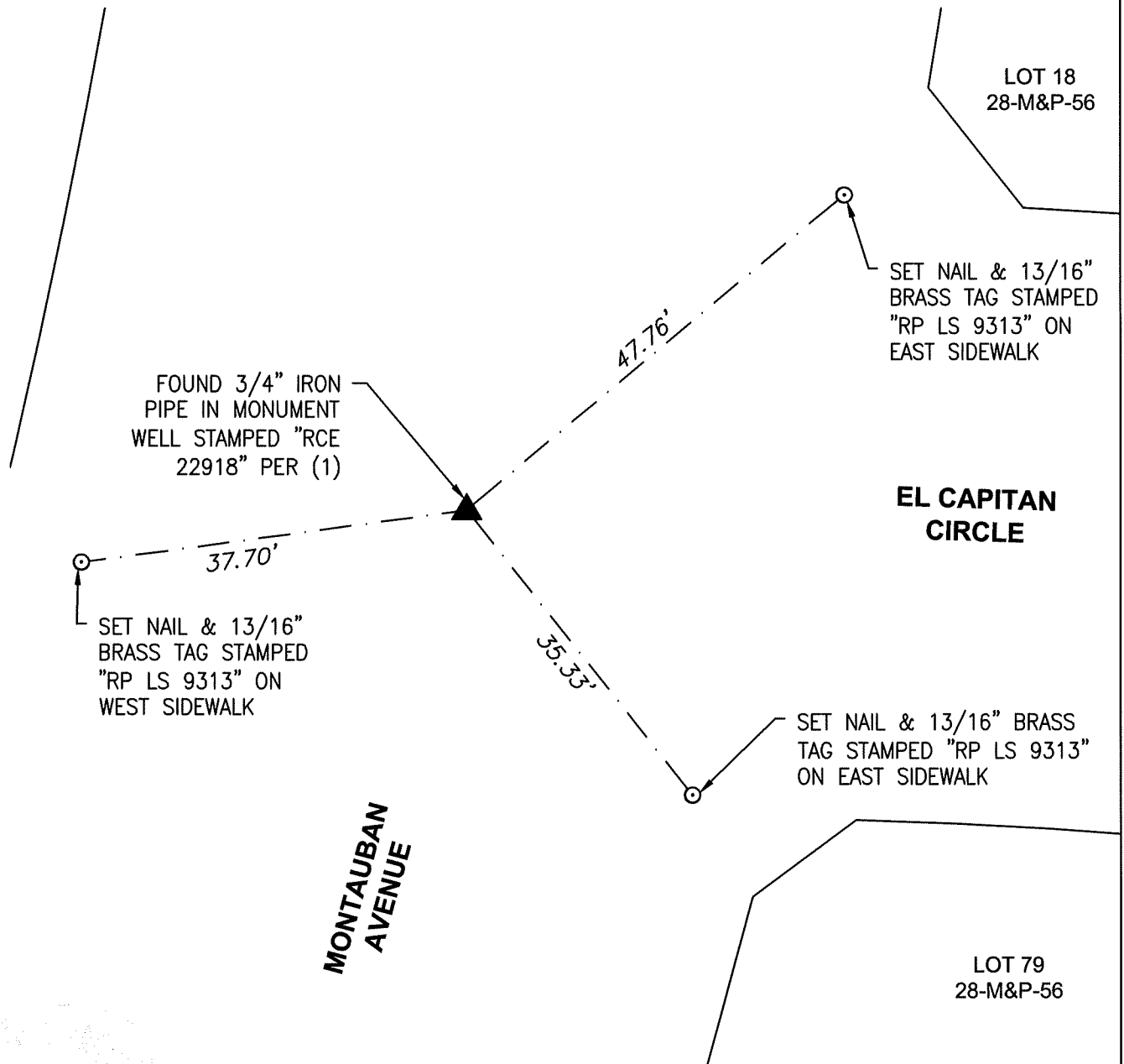
Title County Surveyor



County Surveyor's Comment _____

REFERENCE:

- (1) MAPS AND PLATS, VOLUME 28, PAGE 56 OF SAN JOAQUIN COUNTY RECORDS



MONUMENT NOTES

- ▲ FOUND MONUMENT (AS NOTED) PER (1)
- ⊙ SET MONUMENT (AS NOTED)



THE PURPOSE OF THIS RECORD IS TO DOCUMENT THE PERPETUATION OF FOUND MONUMENT(S) PURSUANT TO THE PLS ACT SECTION 8771.