

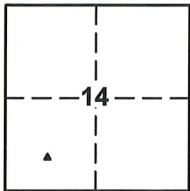
CORNER RECORD

Agency Index CR-20-29
Document Number _____

City of Stockton

County of San Joaquin, California

Brief Legal Description A portion of the south 1/2 of the southwest quarter of Section 14 T.2N R.6E



SEC. 14
T.2N.,R.6E.

CORNER TYPE

- Government Corner Control
- Meander Property
- Rancho Other

Date of Survey August 2019

COORDINATES (Optional)

- N. _____ E. _____
- Elevation _____
- Units Metric U.S. Survey Foot
- Horizontal Datum _____
- Zone _____ Epoch Date _____
- Vertical Datum _____
- Complies with Public Resources Code §§8801-8819
- Complies with Public Resources Code §§8890-8902

- PLS Act Ref: 8765(d) 8771 8773 Other:
- Corner/Monument: Left as found Established Rebuilt Pre-Construction
- Found and tagged Reestablished Referenced Post-Construction

Narrative of corner identified and monument as found, set, reset, replaced, or removed:

See sheet #2 for description(s): Referencing a found 3/4" Iron Pin in monument well, with no tag at the centerline intersection of Hammertown Drive and Montauban Ave in the City of Stockton, San Joaquin County. Three reference marks were set, all being nail & 13/16" brass tag stamped "RP LS 9313", were set to preserve monument location prior to construction. See sheet 2 for details.

SURVEYOR'S STATEMENT

This Corner Record was prepared by me or under my direction in conformance with the Professional Land Surveyors' Act on January 13, 2020

Signed [Signature] P.L.S. or R.C.E. No. 9313



COUNTY SURVEYOR'S STATEMENT

This Corner Record was received January 14, 2020

and examined and filed January 29, 2020

Signed James E. Hart P.L.S. or R.C.E. No. 8657

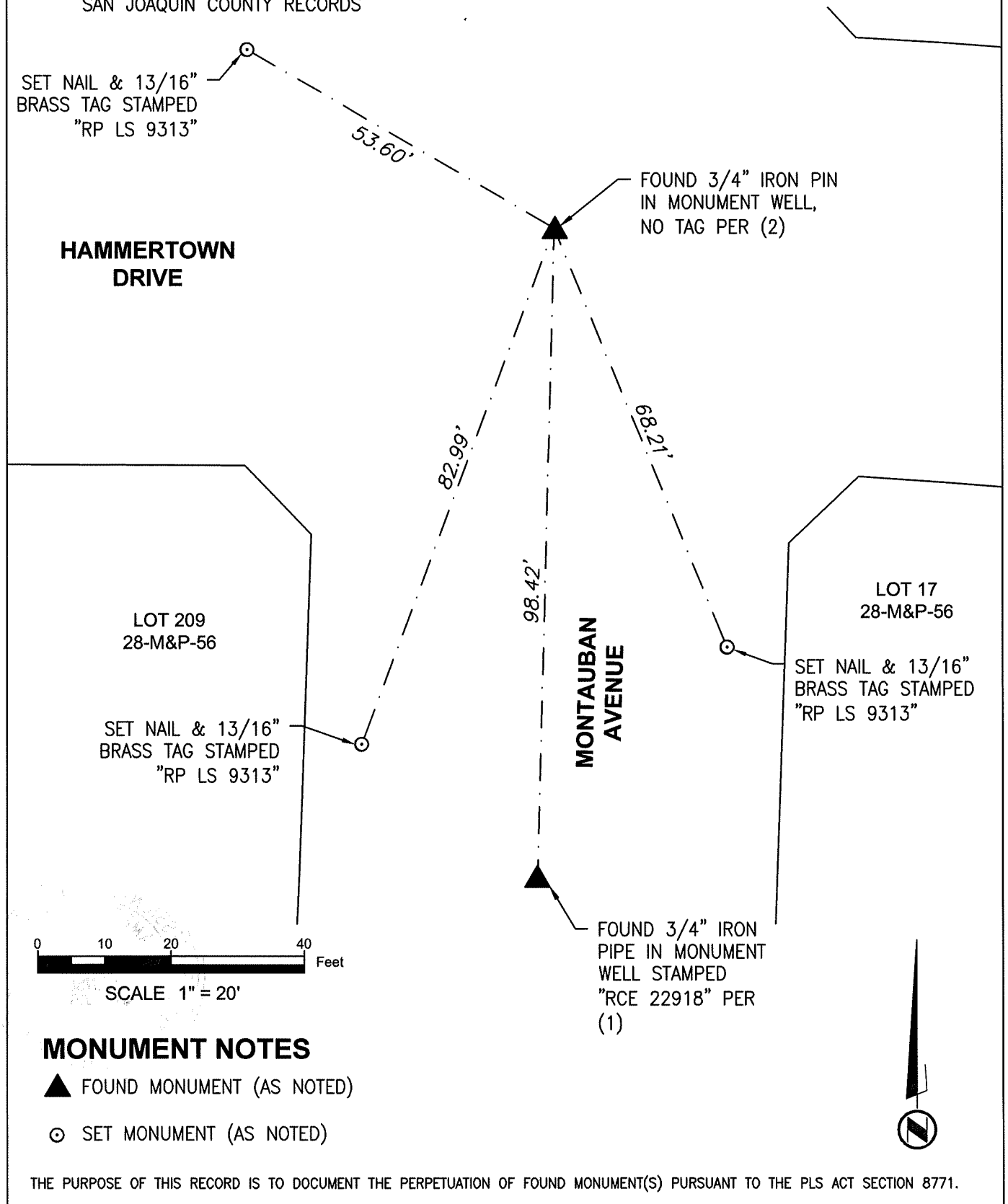
Title County Surveyor



County Surveyor's Comment _____

REFERENCES:

- (1) MAPS AND PLATS, VOLUME 28, PAGE 56 OF SAN JOAQUIN COUNTY RECORDS
- (2) MAPS AND PLATS, VOLUME 40, PAGE 6 OF SAN JOAQUIN COUNTY RECORDS

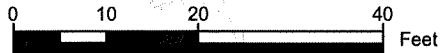


SET NAIL & 13/16"
BRASS TAG STAMPED
"RP LS 9313"

**HAMMERTOWN
DRIVE**

LOT 209
28-M&P-56

SET NAIL & 13/16"
BRASS TAG STAMPED
"RP LS 9313"



SCALE 1" = 20'

MONUMENT NOTES

▲ FOUND MONUMENT (AS NOTED)

⊙ SET MONUMENT (AS NOTED)

FOUND 3/4" IRON PIN
IN MONUMENT WELL,
NO TAG PER (2)

**MONTAUBAN
AVENUE**

LOT 17
28-M&P-56

SET NAIL & 13/16"
BRASS TAG STAMPED
"RP LS 9313"

FOUND 3/4" IRON
PIPE IN MONUMENT
WELL STAMPED
"RCE 22918" PER
(1)



THE PURPOSE OF THIS RECORD IS TO DOCUMENT THE PERPETUATION OF FOUND MONUMENT(S) PURSUANT TO THE PLS ACT SECTION 8771.