

# CORNER RECORD

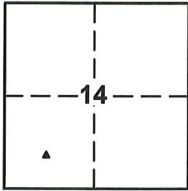
Agency Index CR-20-28

Document Number \_\_\_\_\_

City of Stockton

County of San Joaquin, California

Brief Legal Description A portion of the south 1/2 of the southwest quarter of Section 14 T.2N R.6E



SEC. 14  
T.2N.,R.6E.

### CORNER TYPE

- Government Corner  Control  
 Meander  Property  
 Rancho  Other

Date of Survey August 2019

### COORDINATES (Optional)

- N. \_\_\_\_\_ E. \_\_\_\_\_  
 Elevation \_\_\_\_\_  
 Units Metric  U.S. Survey Foot   
 Horizontal Datum \_\_\_\_\_  
 Zone \_\_\_\_\_ Epoch Date \_\_\_\_\_  
 Vertical Datum \_\_\_\_\_  
 Complies with Public Resources Code §§8801-8819  
 Complies with Public Resources Code §§8890-8902

- PLS Act Ref:  8765(d)  8771  8773  Other:  
 Corner/Monument:  Left as found  Established  Rebuilt  Pre-Construction  
 Found and tagged  Reestablished  Referenced  Post-Construction

Narrative of corner identified and monument as found, set, reset, replaced, or removed:

See sheet #2 for description(s): Referencing a found 3/4" Iron Pipe in monument well stamped "RCE 22918" on the centerline of Montauban Ave in the City of Stockton, San Joaquin County. Three reference marks were set, all being nail & 13/16" brass tag stamped "RP LS 9313", were set to preserve monument location prior to construction. See sheet 2 for details.

### SURVEYOR'S STATEMENT

This Corner Record was prepared by me or under my direction in conformance with the Professional Land Surveyors' Act on January 13, 2020

Signed [Signature] P.L.S. or R.C.E. No. 9313



### COUNTY SURVEYOR'S STATEMENT

This Corner Record was received January 14, 2020

and examined and filed January 29, 2020

Signed James E. Hart P.L.S. or R.C.E. No. 8657

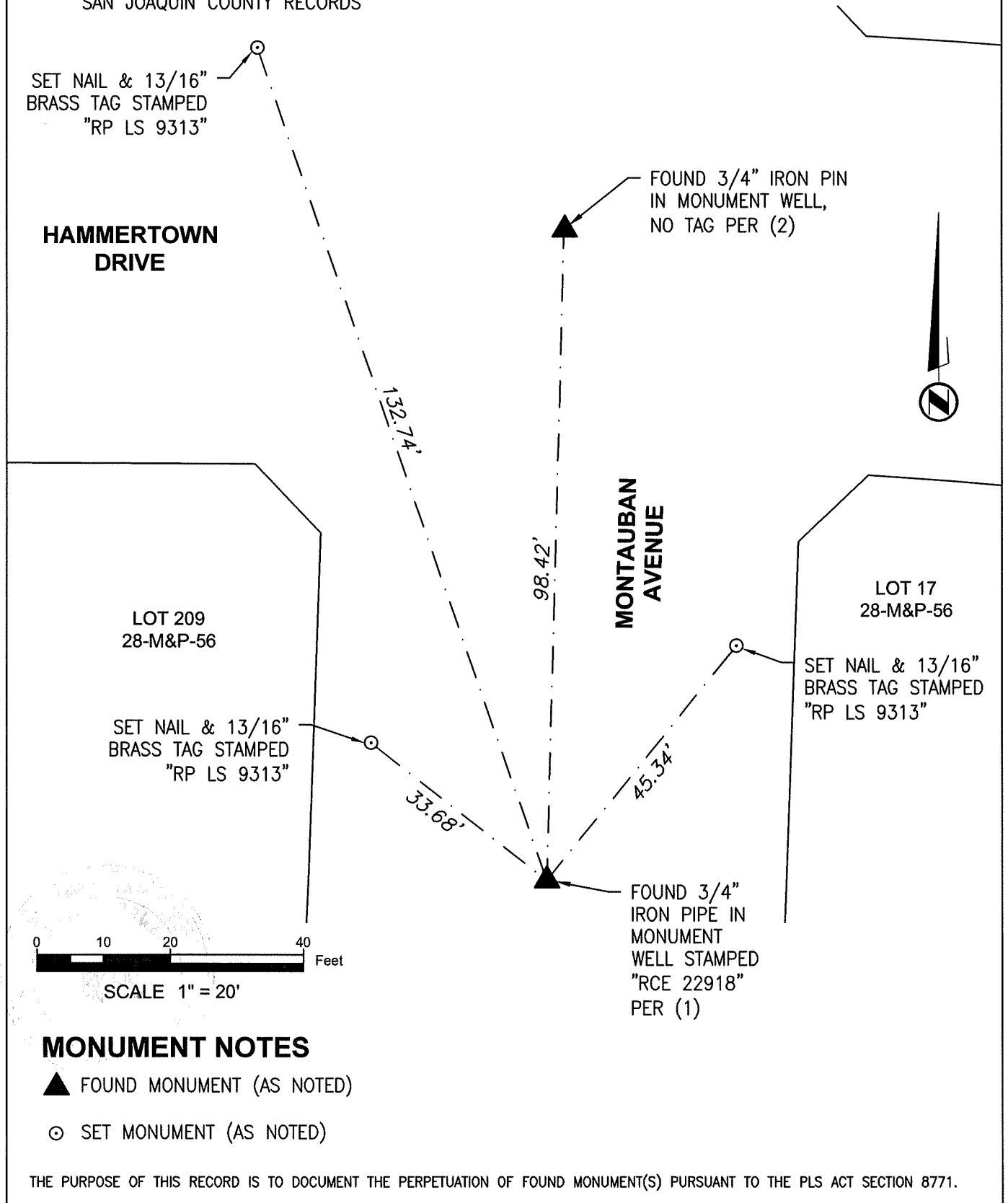
Title County Surveyor



County Surveyor's Comment \_\_\_\_\_  
 \_\_\_\_\_  
 \_\_\_\_\_

**REFERENCES:**

- (1) MAPS AND PLATS, VOLUME 28, PAGE 56 OF SAN JOAQUIN COUNTY RECORDS
- (2) MAPS AND PLATS, VOLUME 40, PAGE 6 OF SAN JOAQUIN COUNTY RECORDS

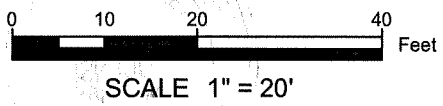


SET NAIL & 13/16"  
BRASS TAG STAMPED  
"RP LS 9313"

**HAMMERTOWN  
DRIVE**

LOT 209  
28-M&P-56

SET NAIL & 13/16"  
BRASS TAG STAMPED  
"RP LS 9313"



**MONUMENT NOTES**

- ▲ FOUND MONUMENT (AS NOTED)
- ⊙ SET MONUMENT (AS NOTED)

FOUND 3/4" IRON PIN  
IN MONUMENT WELL,  
NO TAG PER (2)

**MONTAUBAN  
AVENUE**

LOT 17  
28-M&P-56

SET NAIL & 13/16"  
BRASS TAG STAMPED  
"RP LS 9313"

FOUND 3/4"  
IRON PIPE IN  
MONUMENT  
WELL STAMPED  
"RCE 22918"  
PER (1)

THE PURPOSE OF THIS RECORD IS TO DOCUMENT THE PERPETUATION OF FOUND MONUMENT(S) PURSUANT TO THE PLS ACT SECTION 8771.