

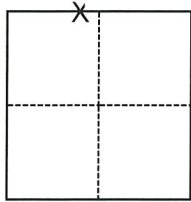
# CORNER RECORD

Agency Index CR-20-27  
 Document Number \_\_\_\_\_

City of \_\_\_\_\_ Lodi \_\_\_\_\_ County of \_\_\_\_\_ San Joaquin \_\_\_\_\_, California  
 Brief Legal Description Centerline monument on Harney Lane east of Springer Lane (M&P 11-135)

### CORNER TYPE

### COORDINATES (Optional)



- Government Corner     Control  
 Meander                     Property  
 Rancho                          Other

N. \_\_\_\_\_ E. \_\_\_\_\_

Elevation \_\_\_\_\_

Units     Metric                     U.S. Survey Foot

Horizontal Datum \_\_\_\_\_

Zone \_\_\_\_\_ Epoch Date \_\_\_\_\_

Vertical Datum \_\_\_\_\_

Complies with Public Resources Code §§8801-8819

Complies with Public Resources Code §§8890-8902

Date of Survey November 6, 2019

Section 22, T.3N., R.6E., M.D.B.&M.

PLS Act Ref.:     8765(d)                     8771                     8773                     Other:

Corner/Monument:     Left as found                     Established                     Rebuilt                     Pre-Construction

Found and tagged                     Reestablished                     Referenced                     Post-Construction

Narrative of corner identified and monument as found, set, reset, replaced, or removed:

See sheet #2 for description(s):

### SURVEYOR'S STATEMENT

This Corner Record was prepared by me or under my direction in conformance with  
 the Professional Land Surveyors' Act on January 15, 2020

Signed *[Signature]* P.L.S. or R.C.E. No. 9478



### COUNTY SURVEYOR'S STATEMENT

This Corner Record was received January 17, 2020

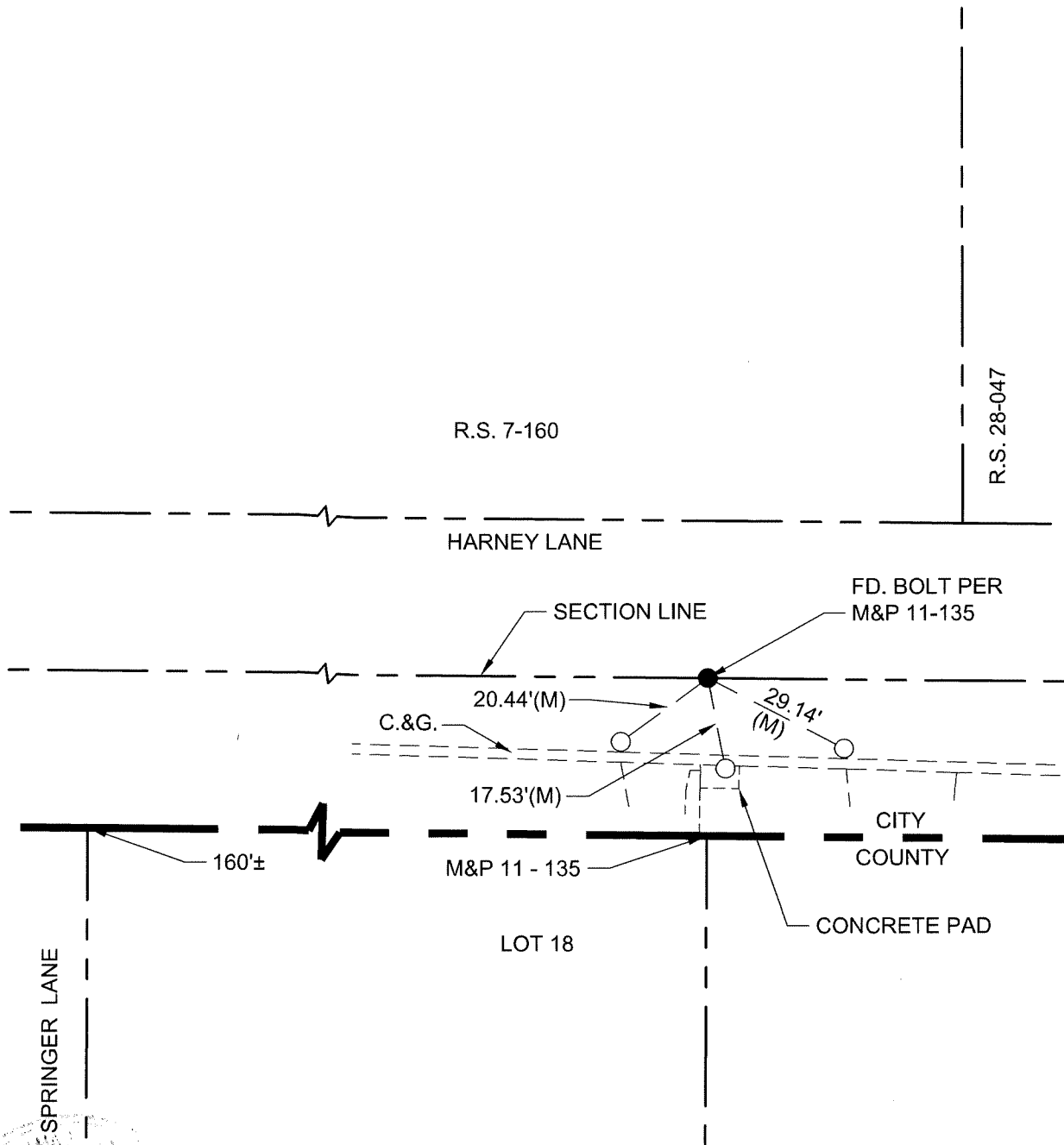
and examined and filed January 29, 2020

Signed *James E. Hart* P.L.S. or R.C.E. No. 8657

Title County Surveyor

County Surveyor's Comment \_\_\_\_\_





**LEGEND**

- FOUND MONUMENT, AS NOTED
- SET MAG NAIL W/ TAG STAMPED "CITY OF LODI PLS #9478" FOUND ON THIS SURVEY
- FD.
- R.S.
- - - M&P
- S.J.C.R.
- - - C.&G.
- EXISTING CONCRETE CURB & GUTTER

