

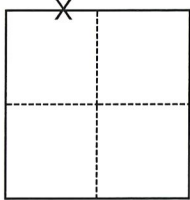
CORNER RECORD

Agency Index CR-20-26
 Document Number _____

City of _____ County of San Joaquin, California
 Brief Legal Description Centerline monuments at Harney Ln. & Extension Rd.(R.S. 35-2 & M&P 11-135)

CORNER TYPE

COORDINATES (Optional)



- Government Corner Control
 Meander Property
 Rancho Other

N. _____ E. _____

Elevation _____

Units Metric U.S. Survey Foot

Horizontal Datum _____

Zone _____ Epoch Date _____

Vertical Datum _____

Complies with Public Resources Code §§8801-8819

Complies with Public Resources Code §§8890-8902

Date of Survey November 6, 2019

Section 22, T.3N., R.6E.
 M.D.B.&M.

PLS Act Ref.: 8765(d) 8771 8773 Other:

Corner/
 Monument: Left as found Established Rebuilt Pre-Construction

Found and tagged Reestablished Referenced Post-Construction

Narrative of corner identified and monument as found, set, reset, replaced, or removed:

See sheet #2 for description(s):

SURVEYOR'S STATEMENT

This Corner Record was prepared by me or under my direction in conformance with
 the Professional Land Surveyors' Act on January 15, 2020

Signed *Jim A. Billigmeier* P.L.S. or R.C.E. No. 9478



COUNTY SURVEYOR'S STATEMENT

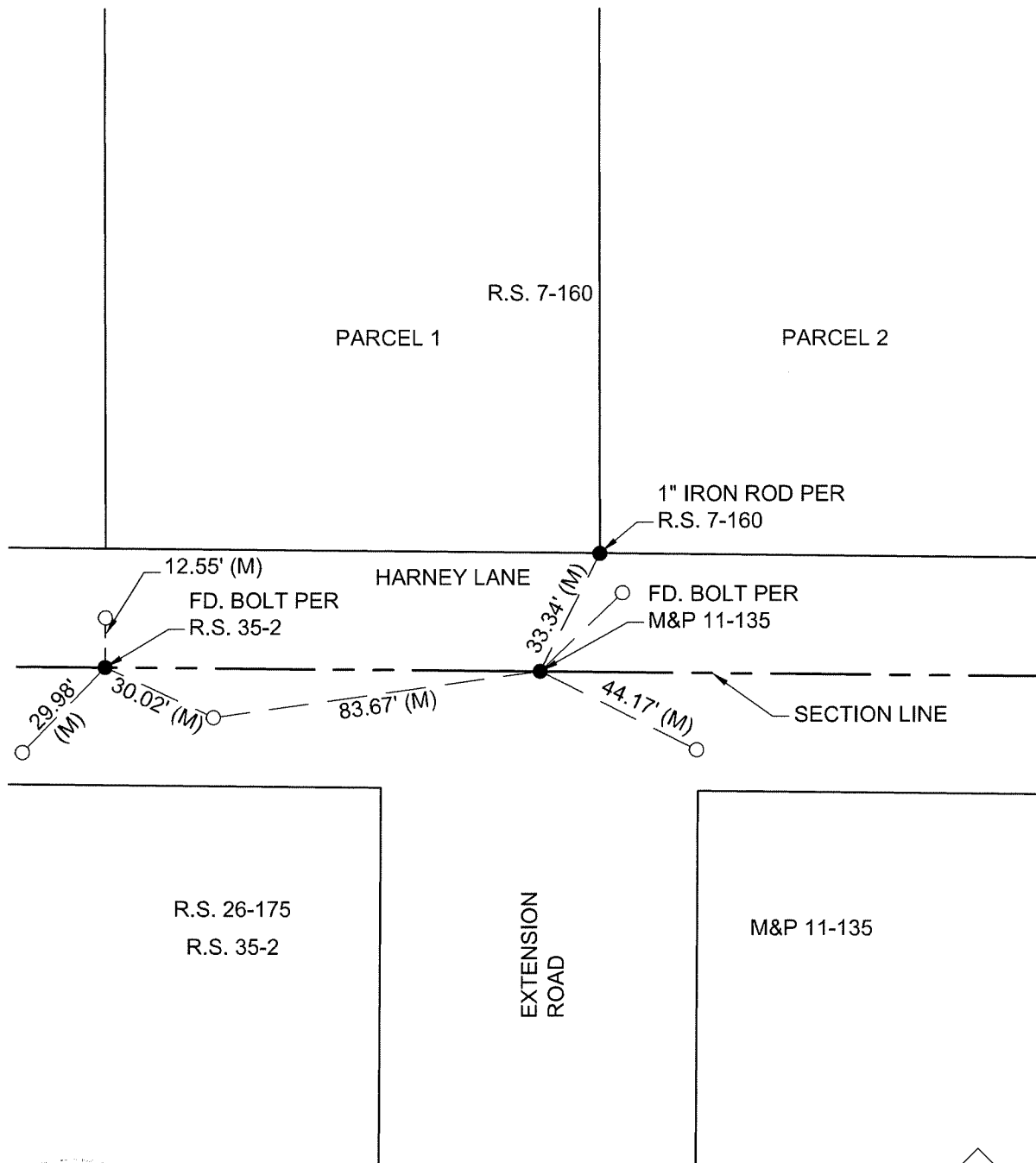
This Corner Record was received January 17, 2020
 and examined and filed January 29, 2020

Signed *James E. Hart* P.L.S. or R.C.E. No. 8657

Title County Surveyor

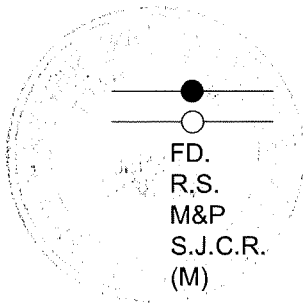
County Surveyor's Comment





LEGEND

- FOUND MONUMENT, AS NOTED
- SET MAG NAIL W/ TAG STAMPED "CITY OF LODI PLS #9478"
- FD. FOUND ON THIS SURVEY
- R.S. RECORD OF SURVEY, BOOK AND PAGE, S.J.C.R.
- M&P MAPS & PLATS, VOLUME AND PAGE, S.J.C.R.
- S.J.C.R. SAN JOAQUIN COUNTY RECORDS
- (M) MEASURED ON THIS SURVEY



SCALE: 1"=40'
019D009