

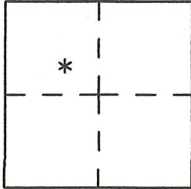
CORNER RECORD

Agency Index CR-20-22
Document Number _____

City of Escalon County of San Joaquin, California
Brief Legal Description Lot 7 in Block 4 (suppliment to) Map of Escalon 4 M&P 13

CORNER TYPE

COORDINATES (Optional)



Government Corner Control
Meander Property
Rancho Other

N. _____ E. _____

Elevation. _____

Units Metric U.S. Survey Foot

Horizontal Datum _____

Zone _____ Epoch Date _____

Date of Survey October 4, 2019

Vertical Datum _____

Complies with Public Resources Code §§8801-8819

Complies with Public Resources Code §§8890-8902

S.4 T.2S.,R9E
M.D.M.

PLS Act Ref.: 8765(d) 8771 8773 Other:

Corner/
Monument: Left as found Established Rebuilt Pre-Construction
 Found and tagged Reestablished Referenced Post-Construction

Narrative of corner identified and monument as found, set, reset, replaced, or removed:

See sheet #2 for description(s):

The position of Lot corners for Lot 7 Block 4, were reestablished by using monuments found from the reference maps shown on the map page herewith. There were no discrepancies or disagreements with the positions by either neighbor on both sides of the subject property. Corners set were 3/4"x 30" iron pipes driven flush into the ground at the rear corners and set 1 foot below surface at the front corners.

SURVEYOR'S STATEMENT

This Corner Record was prepared by me or under my direction in conformance with the Professional Land Surveyor's Act on November 4, 2019

Signed David L. Harris P.L.S. or R.C.E. No. PLS 5443



COUNTY SURVEYOR'S STATEMENT

This Corner Record was received January 13, 2020

and examined and filed January 24, 2020

Signed James E. Hart P.L.S. or R.C.E. No. 8657

Title County Surveyor

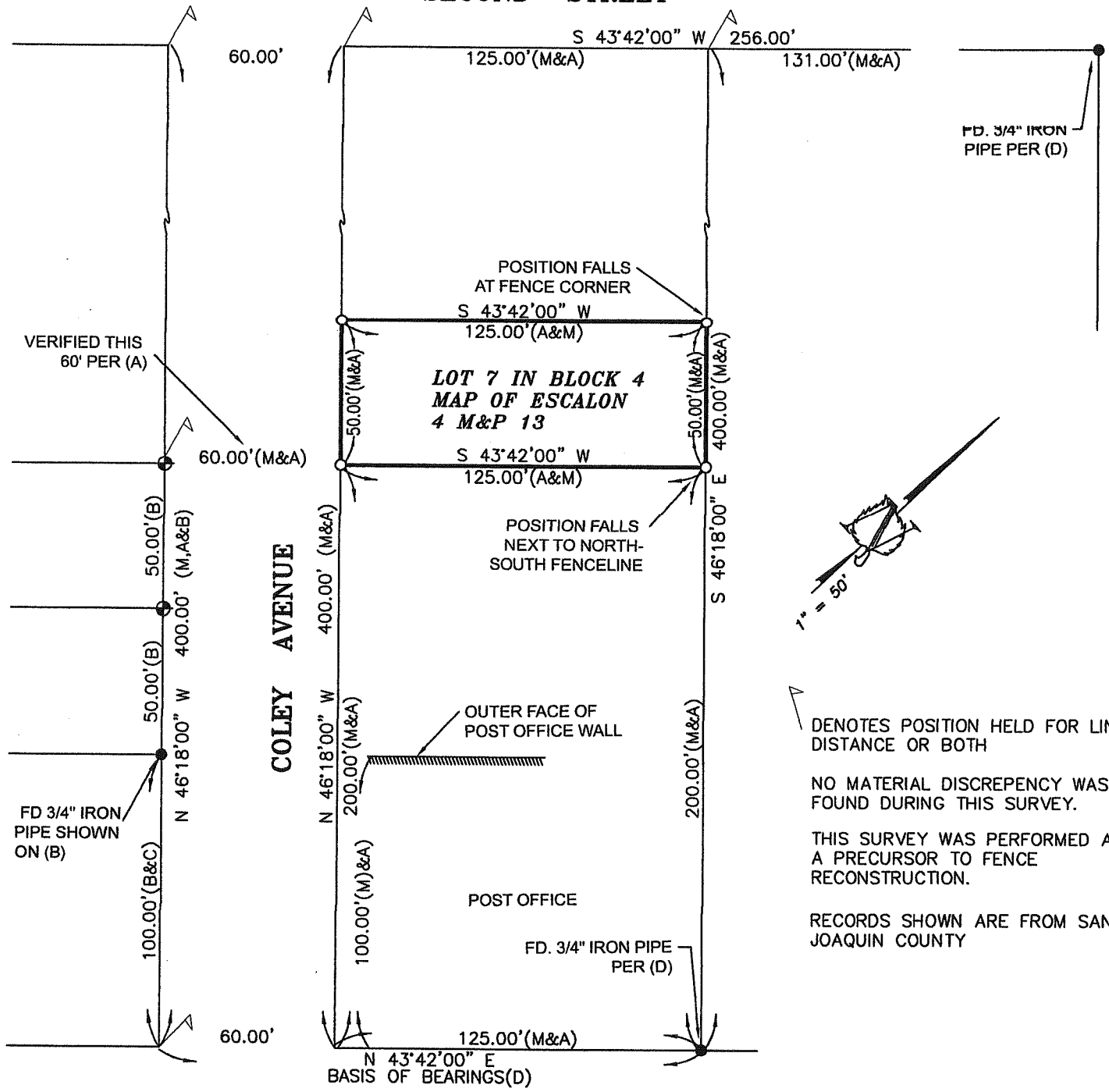
County Surveyor's Comment



D.D. SHEET No. 62

SECOND STREET

JACKSON AVENUE



THIRD STREET

- (A) VOL. 4 OF MAPS & PLATS, PAGE 13
- (B) CORNER RECORD NUMBER 18-142
- (C) BOOK 28 OF SURVEYS, PAGE 154
- (D) BOOK 9 OF PARCEL MAPS, PAGE 11

- " FOUND 3/4" FRAMING PIN WITH TAG LS 5443 (B)
- " FOUND MONUMENT AS NOTED
- " SET 3/4" IRON PIPE L.S. 5443

ASPEN SURVEY
COMPANY, INC.
 1121 OAKDALE RD., STE. 6 MODESTO, CA 95355
 PH: (209) 526-9724 FX: (209) 526-0472