

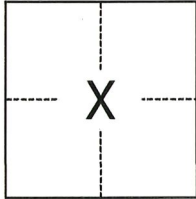
CORNER RECORD

Agency Index CR-20-19
Document Number _____

City of Lathrop County of San Joaquin, California
Brief Legal Description NORTHWEST CORNER OF TRACT 2, RS 35-142, RANCHO EL PESCADERO.

CORNER TYPE

COORDINATES (Optional)



- Government Corner
- Meander
- Rancho
- Control
- Property
- Other

Date of Survey July 8, 2019

N. _____ E. _____
 Elevation _____
 Units Metric U.S. Survey Foot
 Horizontal Datum _____
 Zone _____ Epoch Date _____
 Vertical Datum _____
 Complies with Public Resources Code §§8801-8819
 Complies with Public Resources Code §§8890-8902

T.XN., R.XE., M.D.B.&M.

- PLS Act Ref.: 8765(d) 8771 8773 Other:
- Corner/Monument: Left as found Established Rebuilt Pre-Construction
 Found and tagged Reestablished Referenced Post-Construction

Narrative of corner identified and monument as found, set, reset, replaced, or removed:

See sheet #2 for description(s):

Found 1-1/4" iron pipe (called open iron pin per RS 35-142), down 0.15', no tag, at the end of Stewart Road and east of Old River.
Set new ties; see reverse for details.

SURVEYOR'S STATEMENT

This Corner Record was prepared by me or under my direction in conformance with
 the Professional Land Surveyors' Act on December 19, 2019
 Signed *William M. Koch* (P.L.S. or R.C.E. No. 8092)



COUNTY SURVEYOR'S STATEMENT

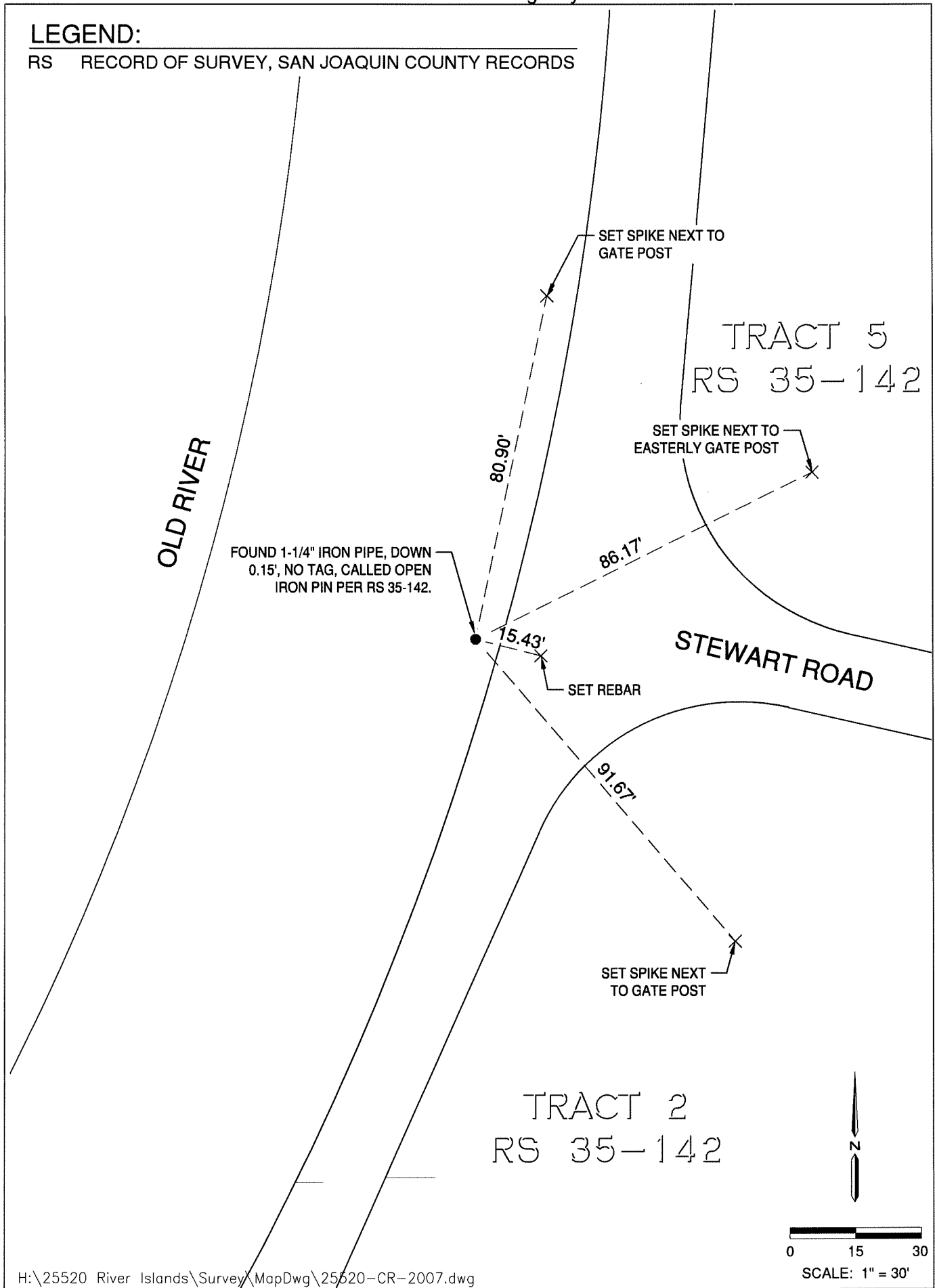
This Corner Record was received December 30, 2019
 and examined and filed January 15, 2020
 Signed *James E. Hart* P.L.S. or R.C.E. No. 8657
 Title County Surveyor



County Surveyor's Comment

LEGEND:

RS RECORD OF SURVEY, SAN JOAQUIN COUNTY RECORDS



H:\25520 River Islands\Survey\MapDwg\25520-CR-2007.dwg