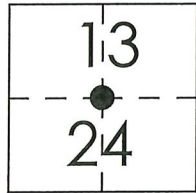


# CORNER RECORD

Agency Index CR-20-18  
Document Number \_\_\_\_\_

City of \_\_\_\_\_ County of San Joaquin, California

Brief Legal Description Peltier Road 2630± west of Ray Road



T4N R5E  
MDB&M

### CORNER TYPE

Government Corner  Control   
Meander  Property   
Rancho  Other

Date of Survey October 17, 2019

### COORDINATES (Optional)

N. \_\_\_\_\_ E. \_\_\_\_\_  
Elevation. \_\_\_\_\_

Units Metric  U.S. Survey Foot

Horizontal Datum \_\_\_\_\_

Zone \_\_\_\_\_ Epoch Date \_\_\_\_\_

Vertical Datum \_\_\_\_\_

Complies with Public Resources Code §§8801-8819

Complies with Public Resources Code §§8890-8902

PLS Act Ref.:  8765(d)  8771  8773  Other:

Corner/  
Monument:  Left as found  Established  Rebuilt  Pre-Construction  
 Found and tagged  Reestablished  Referenced  Post-Construction

Narrative of corner identified and monument as found, set, reset, replaced, or removed:

See sheet #2 for description(s):

### SURVEYOR'S STATEMENT

This Corner Record was prepared by me or under my direction in conformance with  
the Professional Land Surveyor's Act on December 06, 2019

Signed James E Hart P.L.S. or R.C.E. No. 8657



### COUNTY SURVEYOR'S STATEMENT

This Corner Record was received December 17, 2019

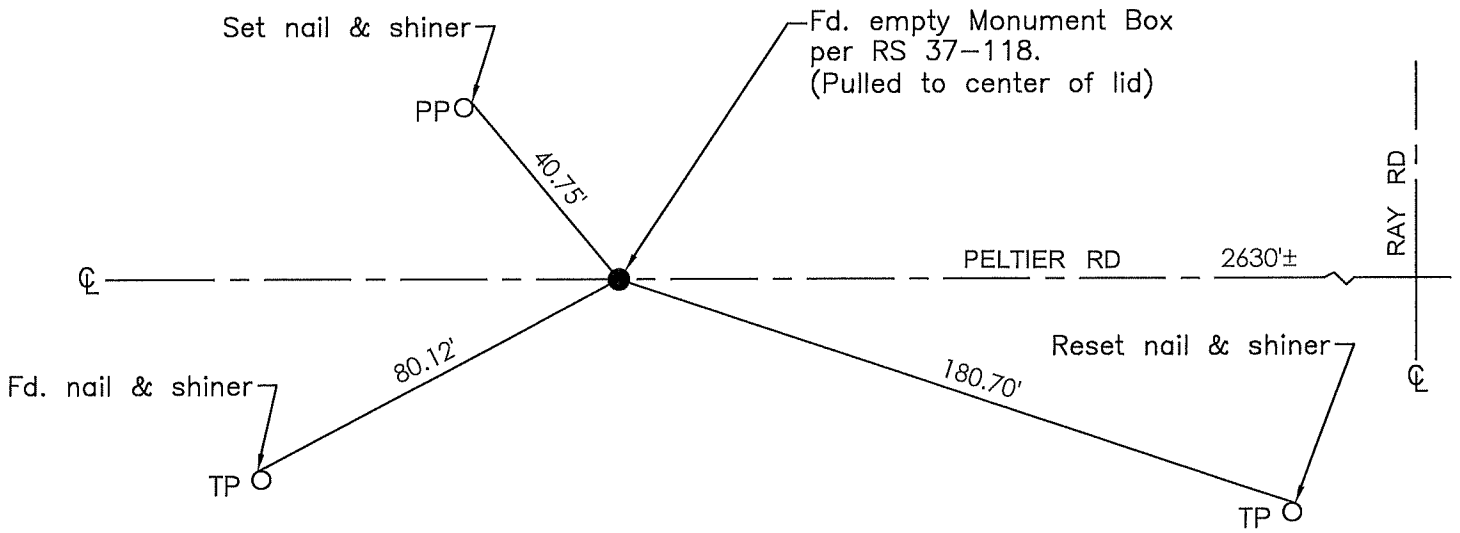
and examined and filed January 10, 2020

Signed James E Hart P.L.S. or R.C.E. No. 8657

Title \_\_\_\_\_ County Surveyor

County Surveyor's Comment





CR=Corner Record  
 FP=Fence Post  
 JP=Joint Pole  
 LP=Light Pole  
 PP=Power Pole  
 GP=Guy Pole  
 SP=Service Pole  
 TP=Telephone Pole  
 S.F.N.=Searched Found Nothing  
 N.T.S.=Not To Scale  
 M&P=Maps & Plats  
 FB=Field Book  
 PM=Parcel Map  
 RS=Record of Survey  
 N=North  
 DI=Drain Inlet  
 TOC=Top of Curb

Set=Conc. Nail with Brass Washer stamped  
 "S.J. Co.", unless otherwise noted  
 Fd.=Found Conc. Nail with Brass Washer stamped  
 "S.J. Co.", unless otherwise noted  
 Note: Found Monuments are not tagged  
 unless otherwise noted.

"No attempt was made to verify the Monument(s)"