

CORNER RECORD

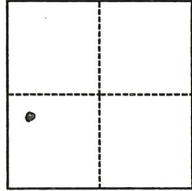
Agency Index CR-20-15

Document Number _____

City of LODI County of SAN JOAQUIN, California

Brief Legal Description CITY OF LODI BENCHMARK 164

SECTION G



T3N R7E
M.D.M

CORNER TYPE

- Government Corner Control
 Meander Property
 Rancho Other

Date of Survey Sept, 26, 2019

COORDINATES (Optional)

N. _____ E. _____

Elevation _____

Units Metric U.S. Survey Foot

Horizontal Datum _____

Zone _____ Epoch Date _____

Vertical Datum _____

Complies with Public Resources Code §§8801-8819

Complies with Public Resources Code §§8890-8902

PLS Act Ref.: 8765(d) 8771 8773 Other:

Corner/Monument: Left as found Established Rebuilt Pre-Construction

Found and tagged Reestablished Referenced Post-Construction

Narrative of corner identified and monument as found, set, reset, replaced, or removed:

See sheet #2 for description(s):

FD BRASS DISC IN SE CORNER OF VICTOR RD. BRIDGE OVER STATE ROUTE 99, STAMPED "CITY OF LODI STA 164"

SURVEYOR'S STATEMENT

This Corner Record was prepared by me or under my direction in conformance with

the Professional Land Surveyors' Act on DEC, 2, 2019

Signed [Signature] P.L.S. or R.C.E. No. 9531



COUNTY SURVEYOR'S STATEMENT

This Corner Record was received December 4, 2019

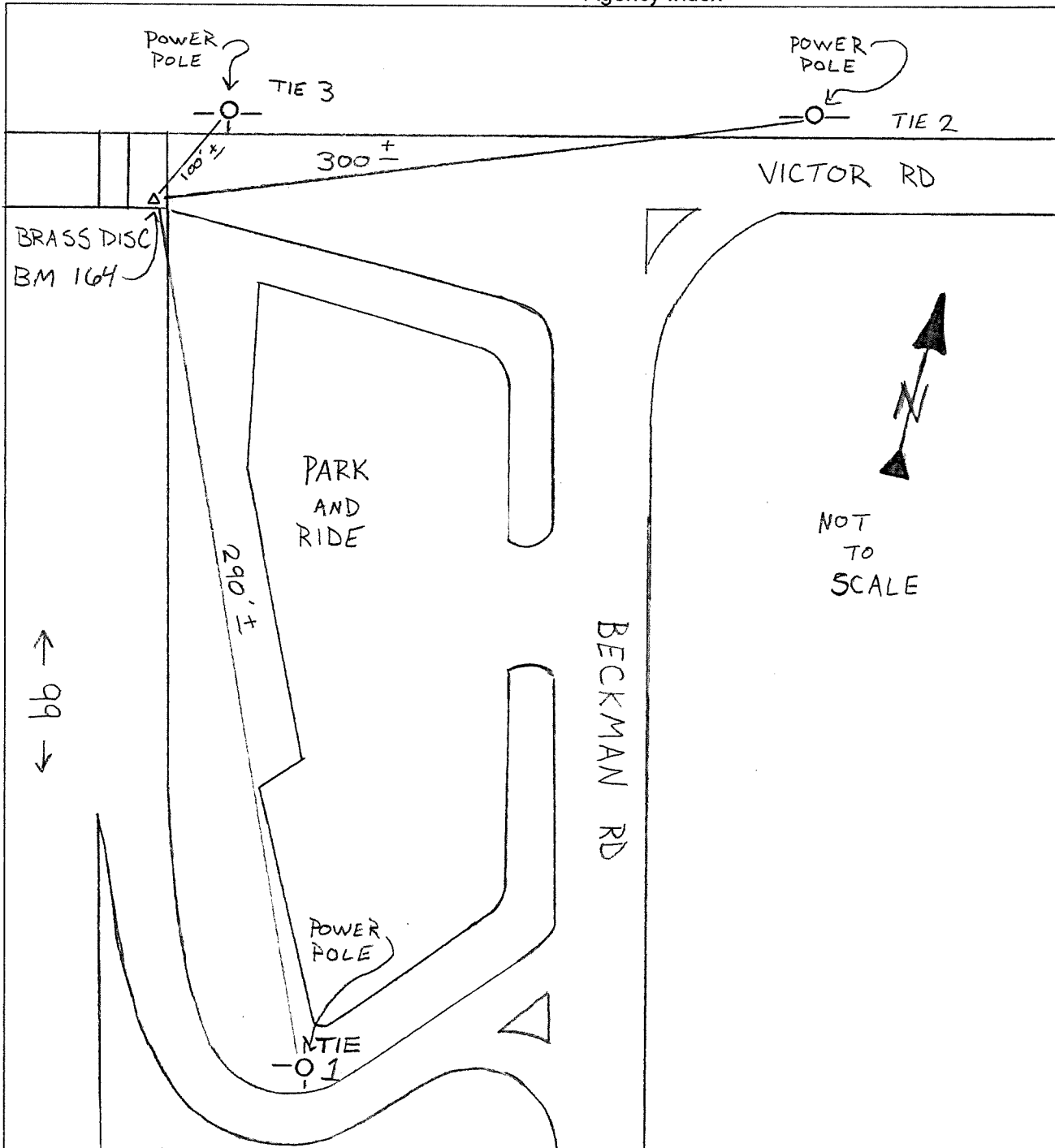
and examined and filed January 8, 2020

Signed James E. Hart P.L.S. or R.C.E. No. 8657

Title County Surveyor

County Surveyor's Comment _____





ELEVATION TIES TO CITY OF LODI BM 164

TIE 1	+1.912'	SET SPIKE WITH "CALTRANS" WASHER IN EAST FACE OF POWER POLE 0.55' ABOVE GROUND
TIE 2	+0.979'	SET SPIKE WITH "CALTRANS" WASHER IN SOUTH FACE OF POWER POLE 0.82' ABOVE GROUND
TIE 3	+0.553'	SET SPIKE WITH "CALTRANS" WASHER IN SOUTH FACE OF POWER POLE 0.55' ABOVE GROUND