

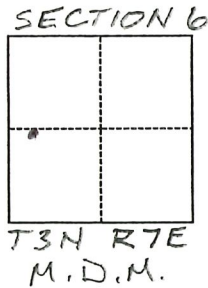
CORNER RECORD

Agency Index CR-20-13

Document Number _____

City of LODI County of SAN JOAQUIN, California

Brief Legal Description CITY OF LODI BENCHMARK 398



CORNER TYPE

- Government Corner Control
 Meander Property
 Rancho Other

Date of Survey 09/26/2019

COORDINATES (Optional)

N. _____ E. _____

Elevation _____

Units Metric U.S. Survey Foot

Horizontal Datum _____

Zone _____ Epoch Date _____

Vertical Datum _____

Complies with Public Resources Code §§8801-8819

Complies with Public Resources Code §§8890-8902

PLS Act Ref.: 8765(d) 8771 8773 Other:

Corner/Monument: Left as found Established Rebuilt Pre-Construction

Found and tagged Reestablished Referenced Post-Construction

Narrative of corner identified and monument as found, set, reset, replaced, or removed:

See sheet #2 for description(s):

FD CITY OF LODI BENCHMARK 398 AND REFERENCED LOCATION WITH 3 VERTICAL TIES AS SHOWN ON REVERSE.

SURVEYOR'S STATEMENT

This Corner Record was prepared by me or under my direction in conformance with the Professional Land Surveyors' Act on DECEMBER 02, 2019.

Signed [Signature] P.L.S. or R.C.E. No. 9531



COUNTY SURVEYOR'S STATEMENT

This Corner Record was received December 4, 2019

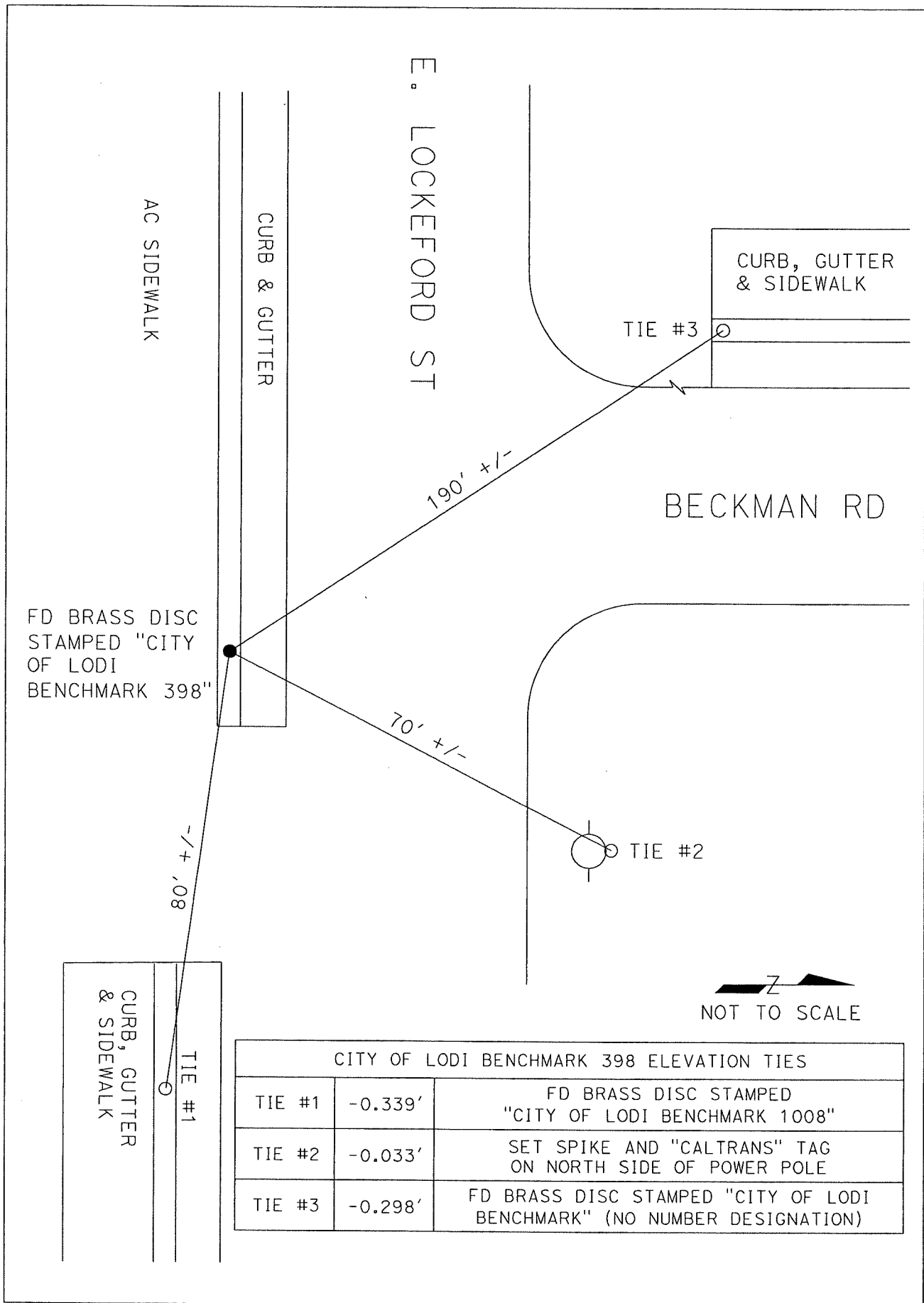
and examined and filed January 8, 2020.

Signed James E. Hart P.L.S. or R.C.E. No. 8657

Title County Surveyor

County Surveyor's Comment _____





FD BRASS DISC
STAMPED "CITY
OF LODI
BENCHMARK 398"

CITY OF LODI BENCHMARK 398 ELEVATION TIES		
TIE #1	-0.339'	FD BRASS DISC STAMPED "CITY OF LODI BENCHMARK 1008"
TIE #2	-0.033'	SET SPIKE AND "CALTRANS" TAG ON NORTH SIDE OF POWER POLE
TIE #3	-0.298'	FD BRASS DISC STAMPED "CITY OF LODI BENCHMARK" (NO NUMBER DESIGNATION)


NOT TO SCALE