

# CORNER RECORD

Agency Index

CR-20-12

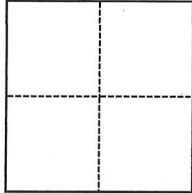
Document Number

City of LODI County of SAN JOAQUIN, California

Brief Legal Description LOTS 3 AND 4 IN BLOCK 12, MOKELUMNE, MAPS AND PLATS, M&P 2-12

### CORNER TYPE

### COORDINATES (Optional)



- Government Corner
- Meander
- Rancho
- Control
- Property
- Other

Date of Survey MAY 23, 2019

N. \_\_\_\_\_ E. \_\_\_\_\_

Elevation \_\_\_\_\_

Units  Metric  U.S. Survey Foot

Horizontal Datum \_\_\_\_\_

Zone \_\_\_\_\_ Epoch Date \_\_\_\_\_

Vertical Datum \_\_\_\_\_

Complies with Public Resources Code §§8801-8819

Complies with Public Resources Code §§8890-8902

PLS Act Ref.:

8765(d)

8771

8773

Other:

Corner/  
Monument:

Left as found

Established

Rebuilt

Pre-Construction

Found and tagged

Reestablished

Referenced

Post-Construction

Narrative of corner identified and monument as found, set, reset, replaced, or removed:

See sheet #2 for description(s):

PRE-CONSTRUCTION CORNER RECORD. THIS DOCUMENT IS FOR THE PURPOSE OF PRESERVING AND ESTABLISHING TIES TO EXISTING MONUMENTS. RETRACEMENT SURVEY WILL DETERMINE VALIDITY OF MONUMENT LOCATIONS. SET MONUMENT TIES TO EXISTING MONUMENTS.

### SURVEYOR'S STATEMENT

This Corner Record was prepared by me or under my direction in conformance with

the Professional Land Surveyors' Act on December 9, 2019

Signed Zachary C. Wong P.L.S. or R.C.E. No. L.S. 7600



### COUNTY SURVEYOR'S STATEMENT

This Corner Record was received December 10, 2019

and examined and filed January 8, 2020

Signed James E. Hart P.L.S. or R.C.E. No. 8657

Title County Surveyor

County Surveyor's Comment



**LEGEND:**

- DOC. DOCUMENT
- FD. FOUND
- I. IRON
- M&P MAPS AND PLATS, BOOK-PAGE
- P.M. PARCEL MAP, BOOK-PAGE
- REF. REFERENCE
- R.S. RECORD OF SURVEY, BOOK-PAGE
  
- ▲ SET PK NAIL/SHINER AS NOTED
- FOUND MONUMENT AS NOTED
- Z- MERGED PROPERTY LINE

**DESCRIPTION:**

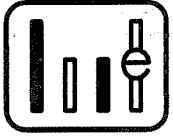
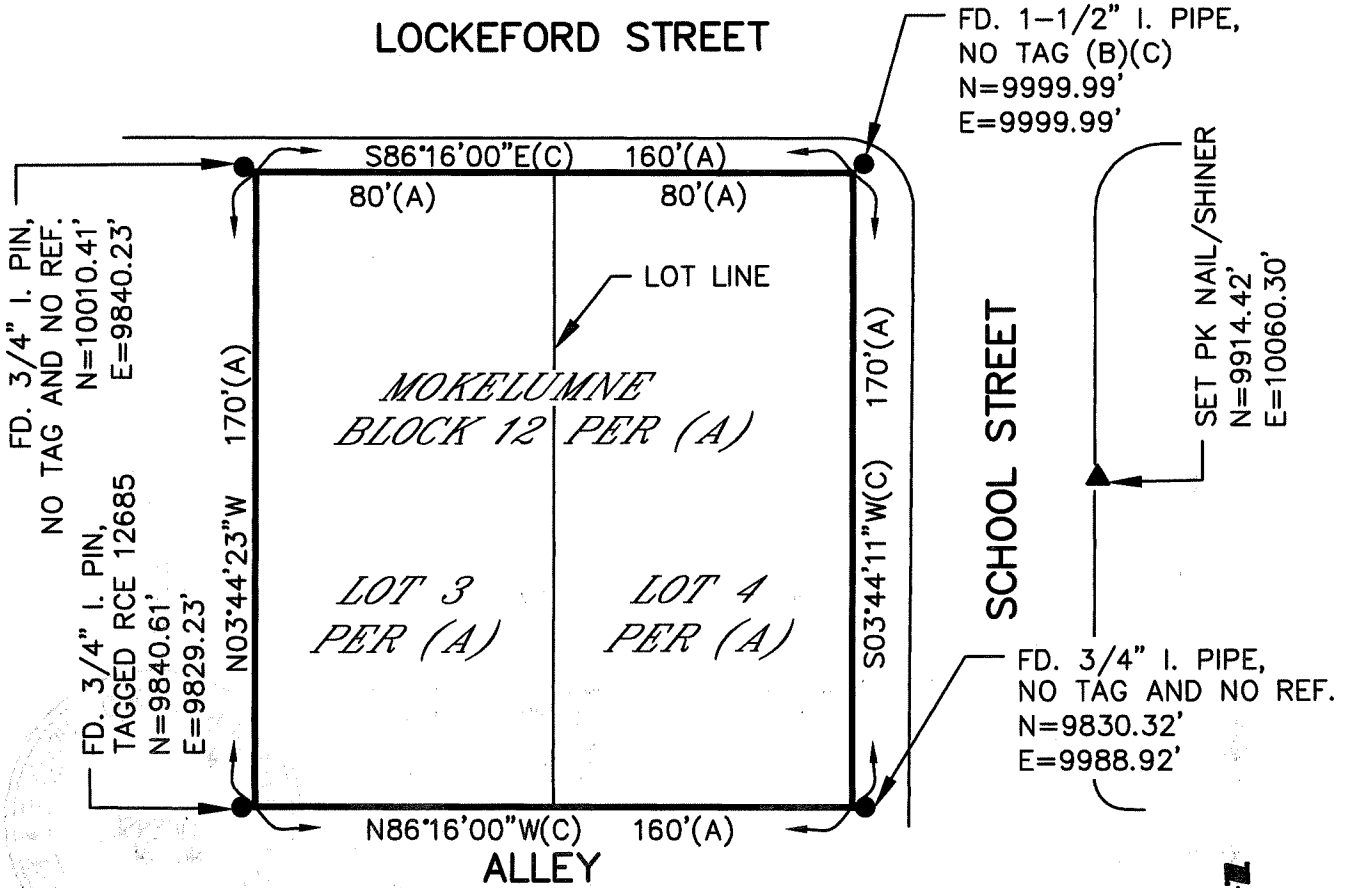
THIS DOCUMENT IS FOR THE PURPOSE OF PRESERVING AND ESTABLISHING TIES TO EXISTING MONUMENTS.

**REFERENCES:**

- (A) M&P 2-12
  - (B) R.S. 7-120
  - (C) P.M. 22-91
- SAN JOAQUIN COUNTY RECORDS

RETRACEMENT SURVEY WILL DETERMINE VALIDITY OF MONUMENT LOCATIONS. SET MONUMENT TIES TO EXISTING MONUMENTS.

SET PK NAIL/SHINER  
N=10078.92'  
E=9920.56'



**WONG ENGINEERS, INC.**  
 PLANNING ENGINEERING SURVEYING  
 4578 FEATHER RIVER DRIVE, SUITE A  
 STOCKTON, CALIFORNIA (209) 476-0011  
 DECEMBER 9, 2019 2 OF 2

