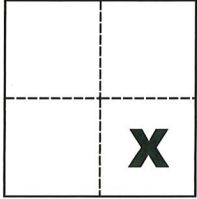


CORNER RECORD

Agency Index CR-20-11
Document Number _____

City of Stockton County of San Joaquin, California

Brief Legal Description Most Westerly corner of Lot 184 and Most Easterly corner of Lot 169, per M. & P. 21-75, S.J.C.R.



Sec. A, C.M. Weber Grant

CORNER TYPE

- Government Corner Control
- Meander Property
- Rancho Other

Date of Survey October 29, 2019

COORDINATES (Optional)

- N. _____ E. _____
- Elevation _____
- Units Metric U.S. Survey Foot
- Horizontal Datum _____
- Zone _____ Epoch Date _____
- Vertical Datum _____

- Complies with Public Resources Code §§8801-8819
- Complies with Public Resources Code §§8890-8902

- PLS Act Ref.: 8765(d) 8771 8773 Other:
- Corner/Monument: Left as found Established Rebuilt Pre-Construction
 Found and tagged Reestablished Referenced Post-Construction

Narrative of corner identified and monument as found, set, reset, replaced, or removed:

See sheet #2 for description(s):

SURVEYOR'S STATEMENT

This Corner Record was prepared by me or under my direction in conformance with

the Professional Land Surveyors' Act on Oct. 29, 2019

Signed Michael L. Quaranta P.L.S. or R.C.E. No. L.S. 4450



COUNTY SURVEYOR'S STATEMENT

This Corner Record was received December 10, 2019

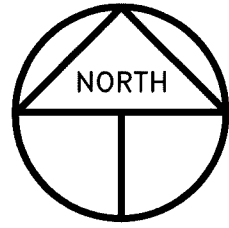
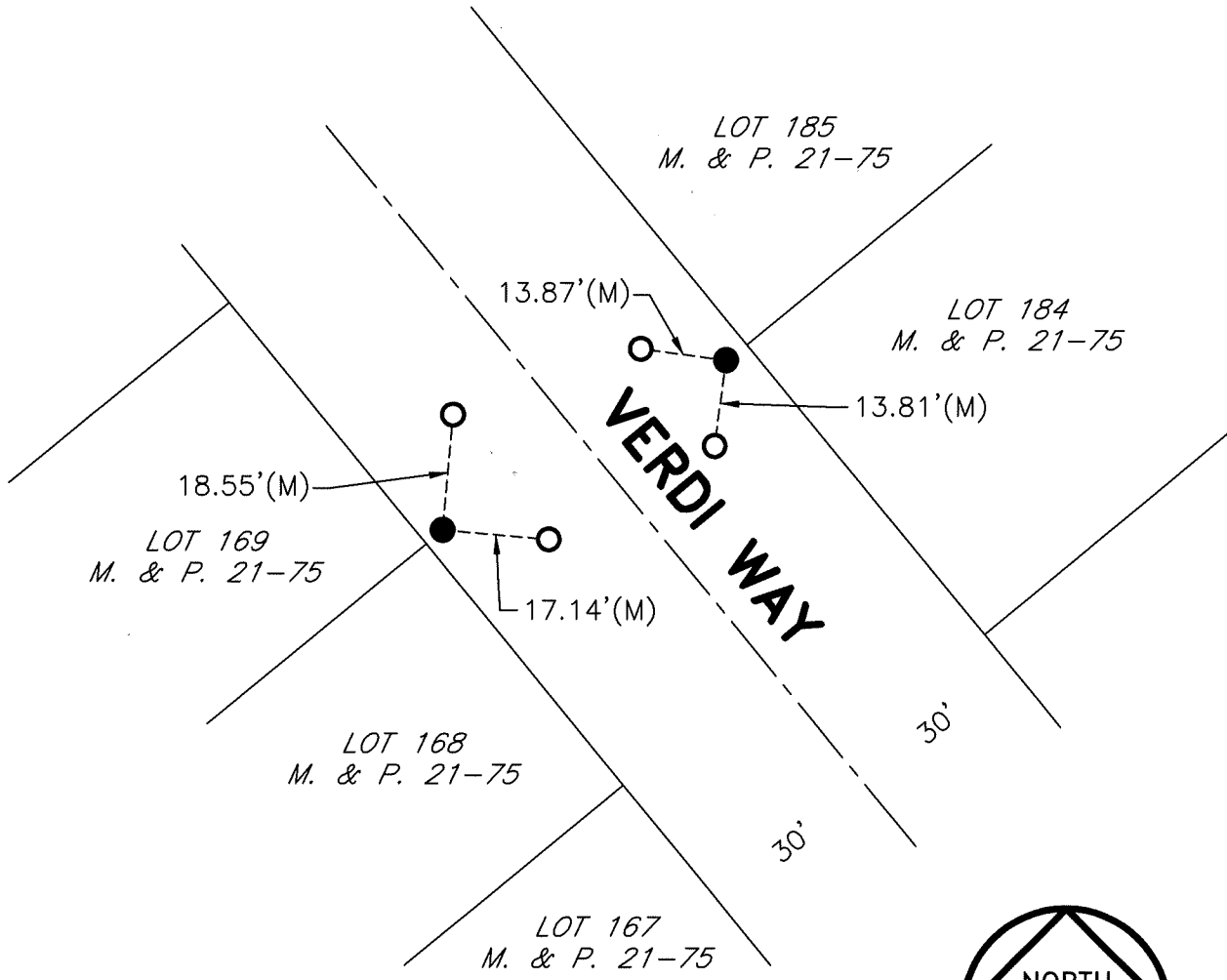
and examined and filed January 8, 2020

Signed James E. Hart P.L.S. or R.C.E. No. 8657

Title County Surveyor

County Surveyor's Comment





SCALE: 1" = 30'
2019-234

LEGEND

- INDICATES FOUND VERY LARGE CHISELED CROSS, NO REFERENCE
- INDICATES SET MAG NAIL
- M. & P. INDICATES MAPS AND PLATS, VOLUME AND PAGE, S.J.C.R.
- S.J.C.R. INDICATES SAN JOAQUIN COUNTY RECORDS
- (M) INDICATES MEASURED ON THIS SURVEY