

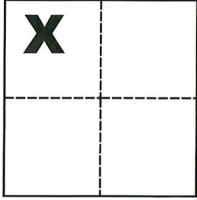
# CORNER RECORD

Agency Index CR-20-10

Document Number \_\_\_\_\_

City of Stockton County of San Joaquin, California

Brief Legal Description Northwesterly corner of Lot 47, per M. & P. 24-82, S.J.C.R.



### CORNER TYPE

Government Corner  Control   
Meander  Property   
Rancho  Other

Date of Survey October 29, 2019

### COORDINATES (Optional)

N. \_\_\_\_\_ E. \_\_\_\_\_  
Elevation \_\_\_\_\_  
Units Metric  U.S. Survey Foot   
Horizontal Datum \_\_\_\_\_  
Zone \_\_\_\_\_ Epoch Date \_\_\_\_\_  
Vertical Datum \_\_\_\_\_

Sec. 28, C.M. Weber Grant

Complies with Public Resources Code §§8801-8819

Complies with Public Resources Code §§8890-8902

PLS Act Ref.:  8765(d)  8771  8773  Other:  
Corner/Monument:  Left as found  Established  Rebuilt  Pre-Construction  
 Found and tagged  Reestablished  Referenced  Post-Construction

Narrative of corner identified and monument as found, set, reset, replaced, or removed:

See sheet #2 for description(s):

### SURVEYOR'S STATEMENT

This Corner Record was prepared by me or under my direction in conformance with the Professional Land Surveyors' Act on Dec. 6, 2019

Signed Michael L. Quarstein P.L.S. or R.C.E. No. L.S. 4450



### COUNTY SURVEYOR'S STATEMENT

This Corner Record was received December 10, 2019

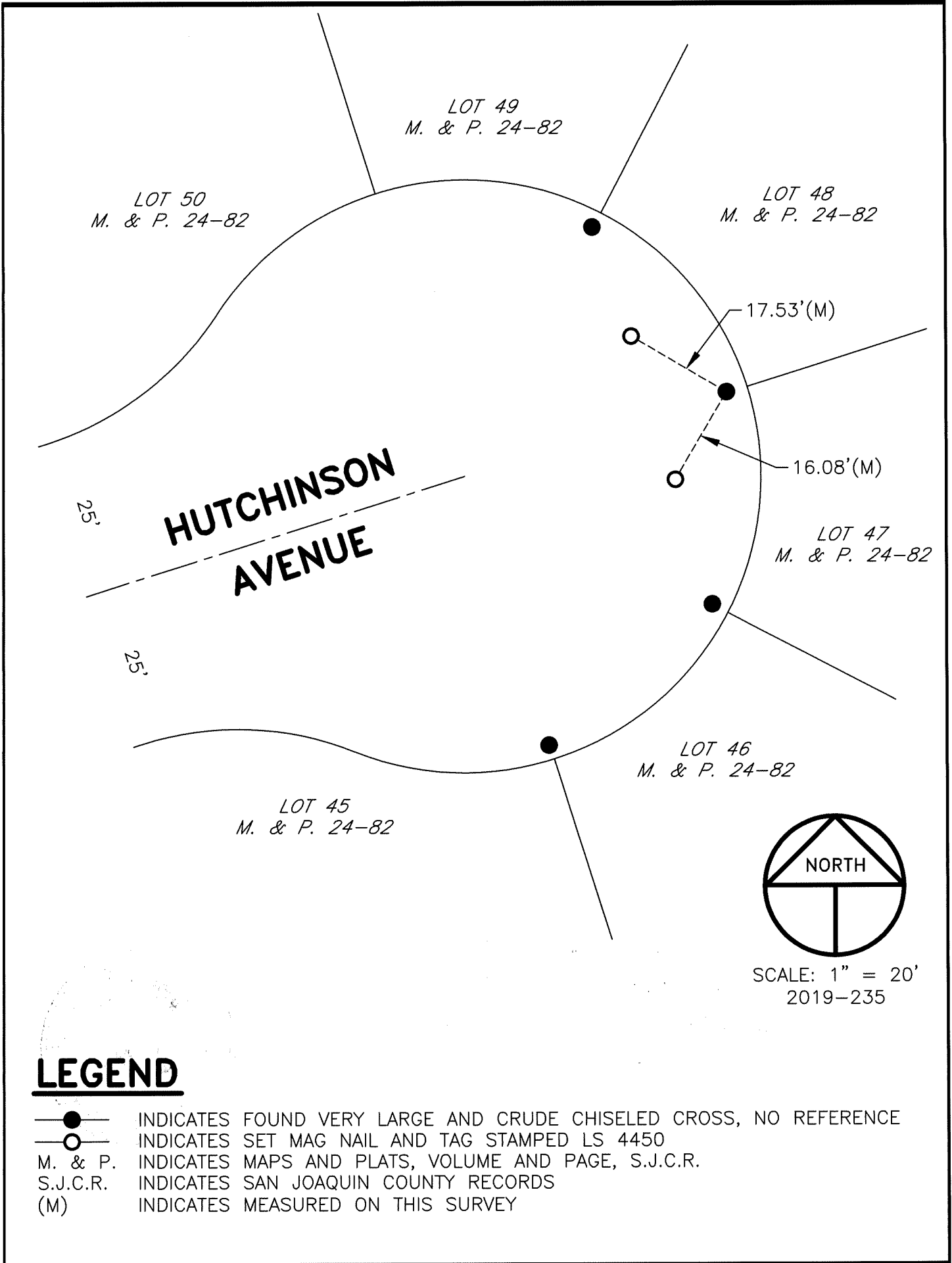
and examined and filed January 8, 2020

Signed James E. Hart P.L.S. or R.C.E. No. 8657

Title County Surveyor

County Surveyor's Comment





# LEGEND

- INDICATES FOUND VERY LARGE AND CRUDE CHISELED CROSS, NO REFERENCE
- INDICATES SET MAG NAIL AND TAG STAMPED LS 4450
- M. & P. INDICATES MAPS AND PLATS, VOLUME AND PAGE, S.J.C.R.
- S.J.C.R. INDICATES SAN JOAQUIN COUNTY RECORDS
- (M) INDICATES MEASURED ON THIS SURVEY