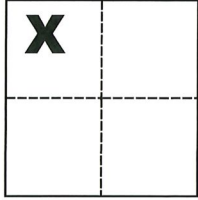


CORNER RECORD

Agency Index CR-20-09
Document Number _____

City of Stockton County of San Joaquin, California

Brief Legal Description Southeasterly corner of Lot 144, per M. & P. 21-24, S.J.C.R.



Sec. A, C.M. Weber Grant

CORNER TYPE

Government Corner Control
Meander Property
Rancho Other

Date of Survey October 29, 2019

COORDINATES (Optional)

N. _____ E. _____
Elevation _____
Units Metric U.S. Survey Foot
Horizontal Datum _____
Zone _____ Epoch Date _____
Vertical Datum _____

Complies with Public Resources Code §§8801-8819
 Complies with Public Resources Code §§8890-8902

PLS Act Ref.: 8765(d) 8771 8773 Other:
Corner/Monument: Left as found Established Rebuilt Pre-Construction
 Found and tagged Reestablished Referenced Post-Construction

Narrative of corner identified and monument as found, set, reset, replaced, or removed:
 See sheet #2 for description(s):

SURVEYOR'S STATEMENT

This Corner Record was prepared by me or under my direction in conformance with the Professional Land Surveyors' Act on Dec. 6, 2019

Signed Michael L. Quartaro P.L.S. or R.C.E. No. L.S. 4450



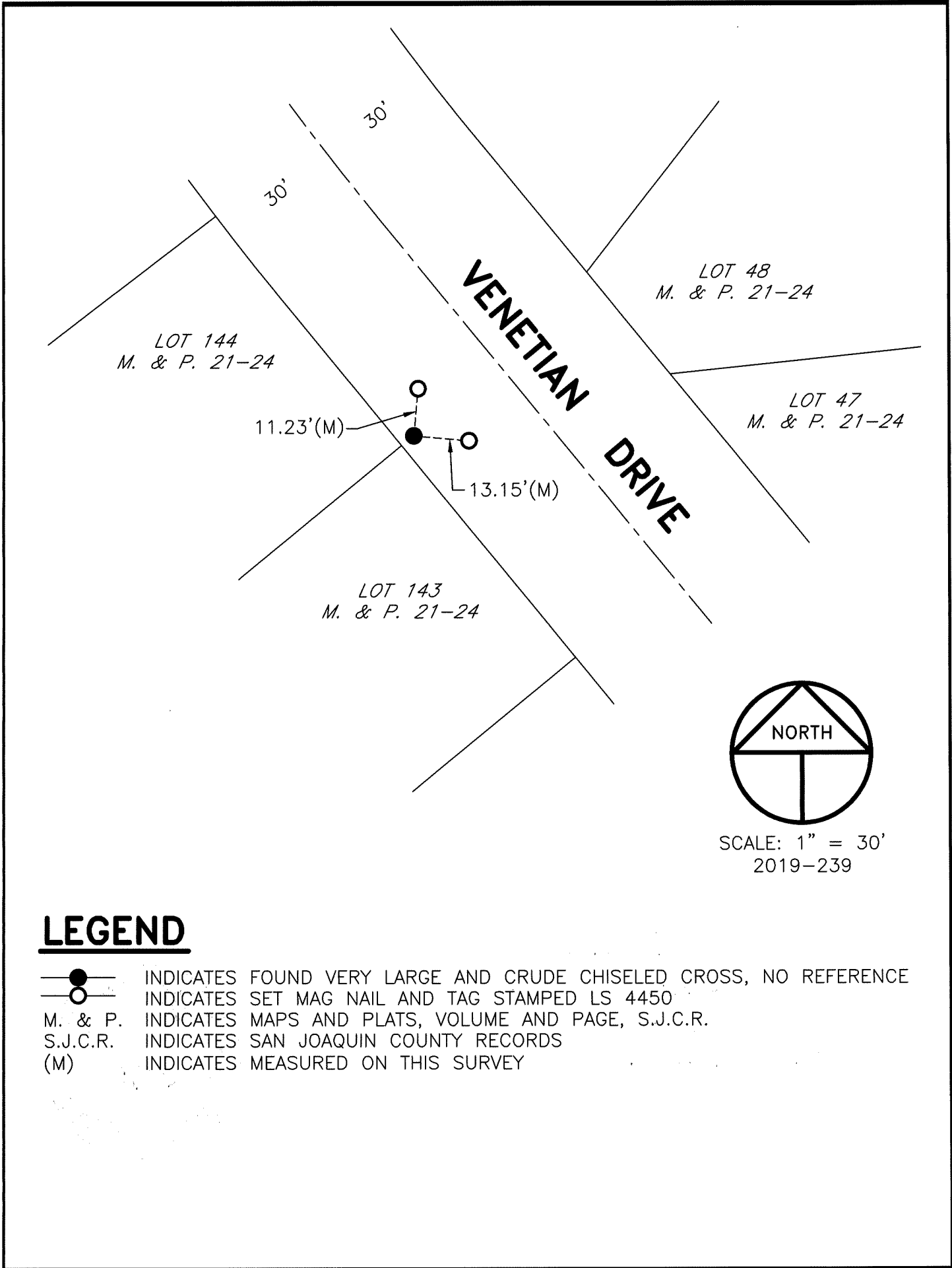
COUNTY SURVEYOR'S STATEMENT

This Corner Record was received December 10, 2019 and examined and filed January 8, 2020

Signed James E. Hart P.L.S. or R.C.E. No. 8657
Title County Surveyor

County Surveyor's Comment





LEGEND

- INDICATES FOUND VERY LARGE AND CRUDE CHISELED CROSS, NO REFERENCE
- INDICATES SET MAG NAIL AND TAG STAMPED LS 4450
- M. & P. INDICATES MAPS AND PLATS, VOLUME AND PAGE, S.J.C.R.
- S.J.C.R. INDICATES SAN JOAQUIN COUNTY RECORDS
- (M) INDICATES MEASURED ON THIS SURVEY