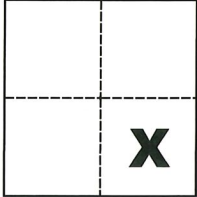


CORNER RECORD

Agency Index CR-20-08
Document Number _____

City of Stockton County of San Joaquin, California

Brief Legal Description Northeast corner of Lot 21, per M. & P. 21-24, S.J.C.R.



CORNER TYPE

Government Corner Control
Meander Property
Rancho Other

Date of Survey October 29, 2019

COORDINATES (Optional)

N. _____ E. _____
Elevation _____
Units Metric U.S. Survey Foot
Horizontal Datum _____
Zone _____ Epoch Date _____
Vertical Datum _____

Sec. A, C.M. Weber
Grant

Complies with Public Resources Code §§8801-8819
 Complies with Public Resources Code §§8890-8902

PLS Act Ref.: 8765(d) 8771 8773 Other:
Corner/Monument: Left as found Established Rebuilt Pre-Construction
 Found and tagged Reestablished Referenced Post-Construction

Narrative of corner identified and monument as found, set, reset, replaced, or removed:

See sheet #2 for description(s):

SURVEYOR'S STATEMENT

This Corner Record was prepared by me or under my direction in conformance with

the Professional Land Surveyors' Act on Dec. 6, 2019

Signed Michael L. Quarantoli P.L.S. or R.C.E. No. L.S. 4450



COUNTY SURVEYOR'S STATEMENT

This Corner Record was received December 10, 2019

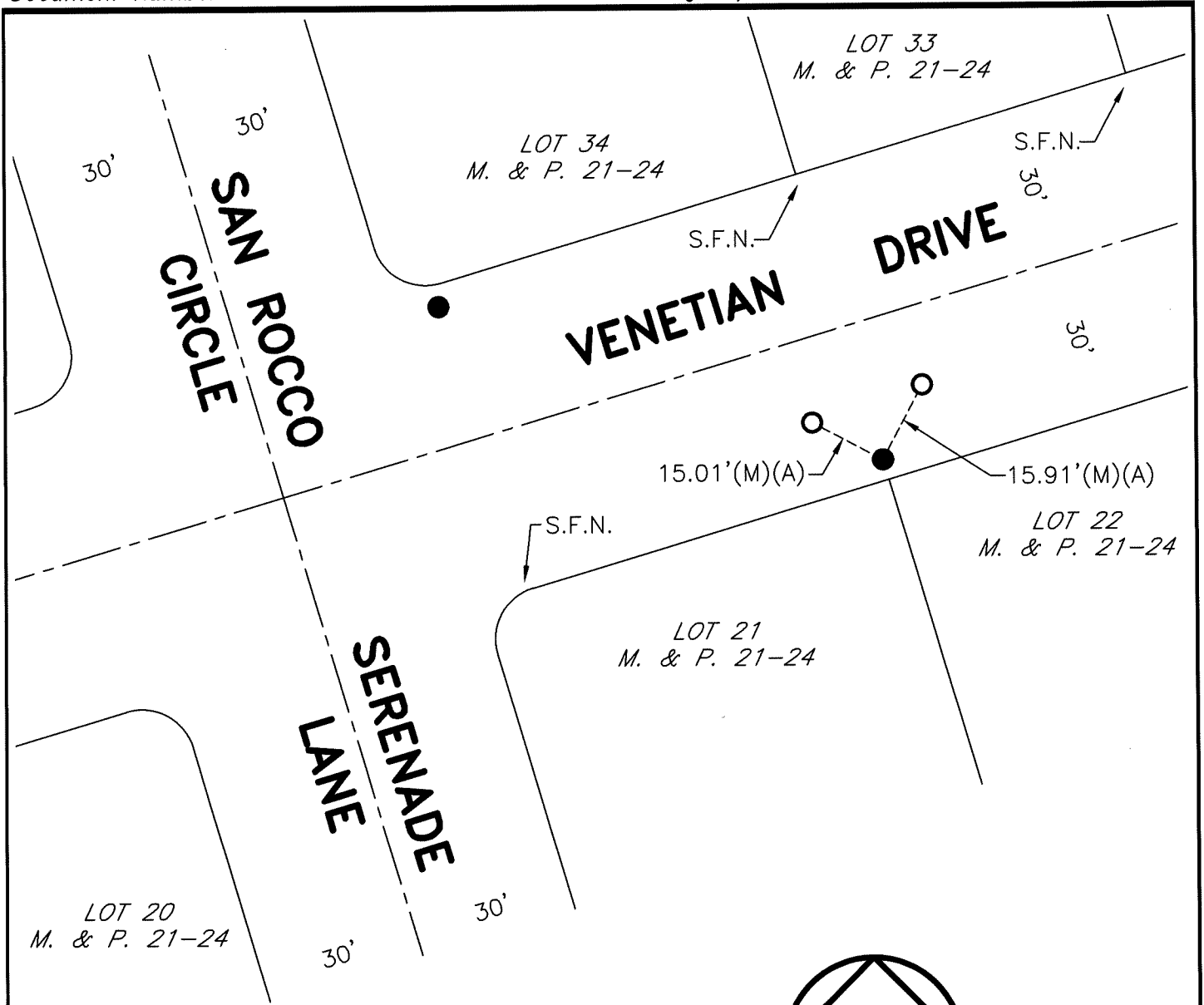
and examined and filed January 8, 2020

Signed James E. Hart P.L.S. or R.C.E. No. 8657

Title County Surveyor

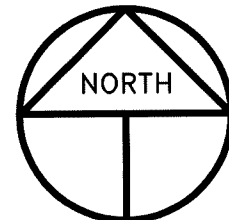
County Surveyor's Comment





REFERENCE

(A) C.R.-19-132, S.J.C.S.R.



SCALE: 1" = 30'
2019-207 POST

LEGEND

- INDICATES FOUND CHISELED CROSS PER (A)
- INDICATES FOUND CONCRETE NAIL AND TAG STAMPED LS 4450 PER (A)
- M. & P. INDICATES MAPS AND PLATS, VOLUME AND PAGE, S.J.C.R.
- S.J.C.R. INDICATES SAN JOAQUIN COUNTY RECORDS
- (M) INDICATES MEASURED ON THIS SURVEY
- C.R. INDICATES CORNER RECORD, S.J.C.S.R.
- S.J.C.S.R. INDICATES SAN JOAQUIN COUNTY SURVEYOR'S RECORDS
- S.F.N. INDICATES SEARCHED FOUND NOTHING