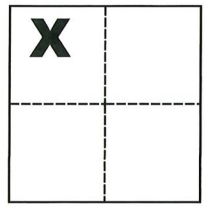


CORNER RECORD

Agency Index CR-20-06
Document Number _____

City of Stockton County of San Joaquin, California
Brief Legal Description Northwesterly corner of Lot 81 per M.&P. 23-74



CORNER TYPE

- Government Corner Control
- Meander Property
- Rancho Other

Date of Survey June 26, 2019

COORDINATES (Optional)

- N. _____ E. _____
- Elevation _____
- Units Metric U.S. Survey Foot
- Horizontal Datum _____
- Zone _____ Epoch Date _____
- Vertical Datum _____
- Complies with Public Resources Code §§8801-8819
- Complies with Public Resources Code §§8890-8902

Sec. 9, T.2N., R.6E.,
M.D.B. & M.

- PLS Act Ref.: 8765(d) 8771 8773 Other:
- Corner/Monument: Left as found Established Rebuilt Pre-Construction
 Found and tagged Reestablished Referenced Post-Construction

Narrative of corner identified and monument as found, set, reset, replaced, or removed:
 See sheet #2 for description(s):

SURVEYOR'S STATEMENT

This Corner Record was prepared by me or under my direction in conformance with the Professional Land Surveyors' Act on Oct. 30, 2019.
Signed Michael L. Quartaroli P.L.S. or R.C.E. No. L.S. 4450

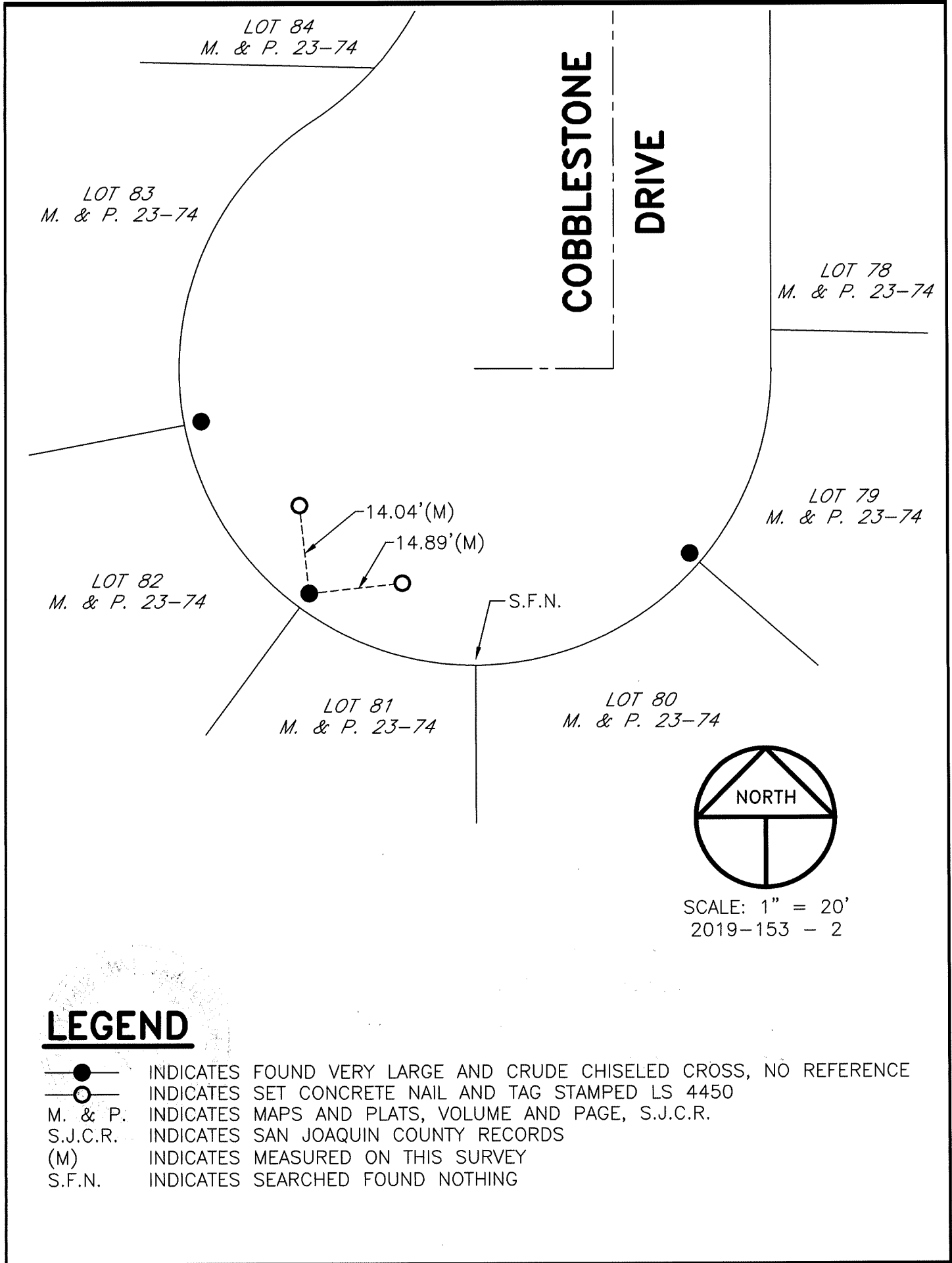


COUNTY SURVEYOR'S STATEMENT

This Corner Record was received December 10, 2019 and examined and filed January 8, 2020.
Signed James E. Hart P.L.S. or R.C.E. No. 8657
Title County Surveyor



County Surveyor's Comment



LEGEND

- INDICATES FOUND VERY LARGE AND CRUDE CHISELED CROSS, NO REFERENCE
- INDICATES SET CONCRETE NAIL AND TAG STAMPED LS 4450
- M. & P. INDICATES MAPS AND PLATS, VOLUME AND PAGE, S.J.C.R.
- S.J.C.R. INDICATES SAN JOAQUIN COUNTY RECORDS
- (M) INDICATES MEASURED ON THIS SURVEY
- S.F.N. INDICATES SEARCHED FOUND NOTHING