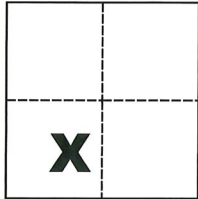


# CORNER RECORD

Agency Index CR-20-04  
 Document Number \_\_\_\_\_

City of Stockton County of San Joaquin, California

Brief Legal Description Northeasterly corner of Lot 219, per M. & P. 18-29, S.J.C.R.



### CORNER TYPE

Government Corner  Control   
 Meander  Property   
 Rancho  Other

Date of Survey October 3, 2019

### COORDINATES (Optional)

N. \_\_\_\_\_ E. \_\_\_\_\_  
 Elevation \_\_\_\_\_  
 Units  Metric  U.S. Survey Foot   
 Horizontal Datum \_\_\_\_\_  
 Zone \_\_\_\_\_ Epoch Date \_\_\_\_\_  
 Vertical Datum \_\_\_\_\_

Sec. 19, T.2N., R.6E.,  
 M.D.B. & M.

Complies with Public Resources Code §§8801-8819  
 Complies with Public Resources Code §§8890-8902

PLS Act Ref.:  8765(d)  8771  8773  Other:  
 Corner/Monument:  Left as found  Established  Rebuilt  Pre-Construction  
 Found and tagged  Reestablished  Referenced  Post-Construction

Narrative of corner identified and monument as found, set, reset, replaced, or removed:  
 See sheet #2 for description(s):

### SURVEYOR'S STATEMENT

This Corner Record was prepared by me or under my direction in conformance with  
 the Professional Land Surveyors' Act on Dec. 6, 2019  
 Signed Michael L. Quartaro P.L.S. or R.C.E. No. L.S. 4450



### COUNTY SURVEYOR'S STATEMENT

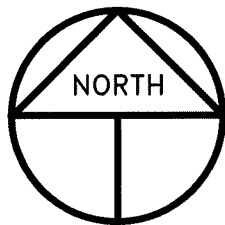
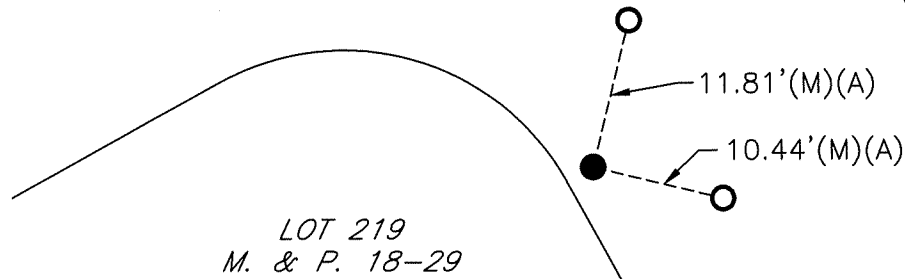
This Corner Record was received December 10, 2019  
 and examined and filed January 8, 2020  
 Signed James E. Hart P.L.S. or R.C.E. No. 8657  
 Title County Surveyor



County Surveyor's Comment

MONITOR CIRCLE NORTH

CUMBERLAND PLACE



SCALE: 1" = 15'  
2019-186 - POST

### REFERENCE

(A) C.R.-19-135, S.J.C.S.R.

### LEGEND

- — INDICATES FOUND CHISELED CROSS PER (A)
- — INDICATES FOUND MAG NAIL PER (A) WITH TAG STAMPED LS 4450
- M. & P. INDICATES MAPS AND PLATS, VOLUME AND PAGE, S.J.C.R.
- S.J.C.R. INDICATES SAN JOAQUIN COUNTY RECORDS
- (M) INDICATES MEASURED ON THIS SURVEY
- C.R. INDICATES CORNER RECORD, S.J.C.S.R.
- S.J.C.S.R. INDICATES SAN JOAQUIN COUNTY SURVEYOR'S RECORDS