

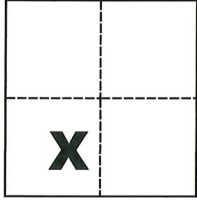
CORNER RECORD

Agency Index CR-20-03

Document Number _____

City of Stockton County of San Joaquin, California

Brief Legal Description Most Northerly corner of Lot 175 and Southwesterly line of Lot 180 per M. & P. 24-69, S.J.C.R.



CORNER TYPE

- Government Corner Control
 Meander Property
 Rancho Other

Date of Survey October 3, 2019

COORDINATES (Optional)

N. _____ E. _____

Elevation _____

Units Metric U.S. Survey Foot

Horizontal Datum _____

Zone _____ Epoch Date _____

Vertical Datum _____

Complies with Public Resources Code §§8801-8819

Complies with Public Resources Code §§8890-8902

Sec. 32, T.2N., R.6E.,
M.D.B. & M.

PLS Act Ref.: 8765(d) 8771 8773 Other:

Corner/Monument: Left as found Established Rebuilt Pre-Construction
 Found and tagged Reestablished Referenced Post-Construction

Narrative of corner identified and monument as found, set, reset, replaced, or removed:

See sheet #2 for description(s):

SURVEYOR'S STATEMENT

This Corner Record was prepared by me or under my direction in conformance with

the Professional Land Surveyors' Act on Dec. 6, 2019

Signed Michael L. Quartraco P.L.S. or R.C.E. No. L.S. 4450



COUNTY SURVEYOR'S STATEMENT

This Corner Record was received December 10, 2019

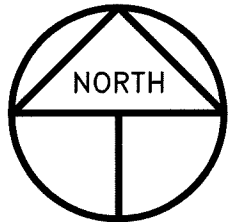
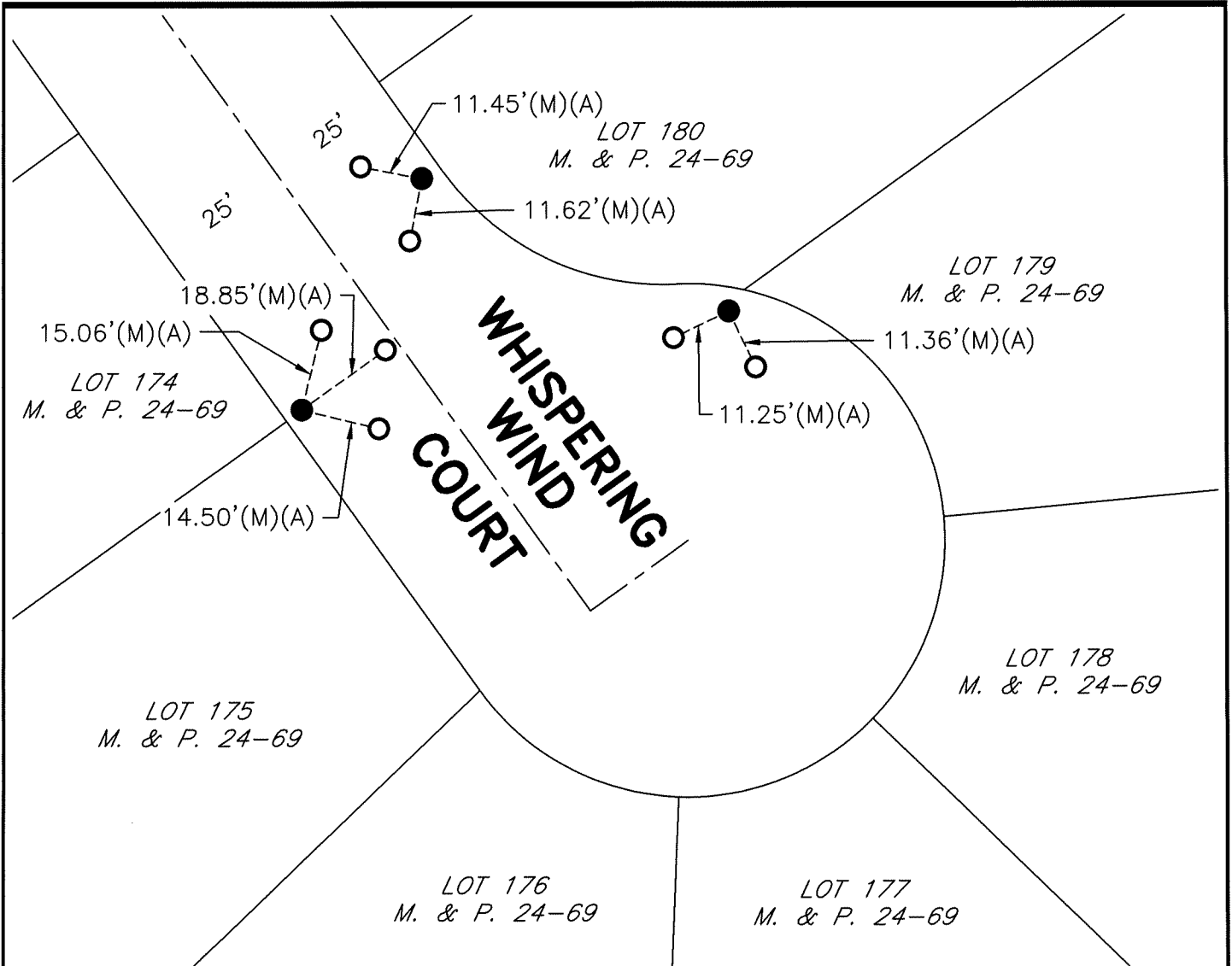
and examined and filed January 8, 2020

Signed James E. Hart P.L.S. or R.C.E. No. 8657

Title County Surveyor

County Surveyor's Comment





SCALE: 1" = 30'
2019-190 - POST

REFERENCE

(A) C.R.-19-133, S.J.C.S.R.

LEGEND

- INDICATES FOUND CHISELED CROSS PER (A)
- INDICATES FOUND MAG NAIL PER (A) WITH TAG STAMPED LS 4450
- M. & P. INDICATES MAPS AND PLATS, VOLUME AND PAGE, S.J.C.R.
- S.J.C.R. INDICATES SAN JOAQUIN COUNTY RECORDS
- (M) INDICATES MEASURED ON THIS SURVEY
- C.R. INDICATES CORNER RECORD, S.J.C.S.R.
- S.J.C.S.R. INDICATES SAN JOAQUIN COUNTY SURVEYOR'S RECORDS