

CORNER RECORD

Agency Index CR-20-02

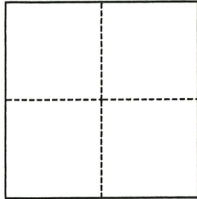
Document Number _____

City of TRACY County of SAN JOAQUIN, California

Brief Legal Description Corral Hollow Road and Linne Road

CORNER TYPE

COORDINATES (Optional)



- Government Corner
- Meander
- Rancho
- Control
- Property
- Other

Date of Survey October 10, 2019

N. _____ E. _____

Elevation SEE ATTACHED

Units Metric U.S. Survey Foot

Horizontal Datum NAD83

Zone 3 Epoch Date _____

Vertical Datum NAVD88

Complies with Public Resources Code §§8801-8819

Complies with Public Resources Code §§8890-8902

PLS Act Ref.: 8765(d) 8771 8773 Other:

Corner/Monument: Left as found Established Rebuilt Pre-Construction

Found and tagged Reestablished Referenced Post-Construction

Narrative of corner identified and monument as found, set, reset, replaced, or removed:

See sheet #2 for description(s):

POST-CONSTRUCTION DOCUMENTATION OF BRASS DISK RESET FOR CITY OF TRACY CONTROL POINT 2079, NEAR THE INTERSECTION OF CORRAL HOLLOW ROAD AND LINNE ROAD SEE ATTACHED SKETCH.

SURVEYOR'S STATEMENT

This Corner Record was prepared by me or under my direction in conformance with

the Professional Land Surveyors' Act on November 25, 2019

Signed S. Kyle Pack P.L.S. or R.C.E. No. 8164



COUNTY SURVEYOR'S STATEMENT

This Corner Record was received November 26, 2019

and examined and filed January 7, 2020

Signed James E. Hart P.L.S. or R.C.E. No. 8657

Title County Surveyor

County Surveyor's Comment





SCALE: 1" = 60'

CORRAL
HOLLOW ROAD

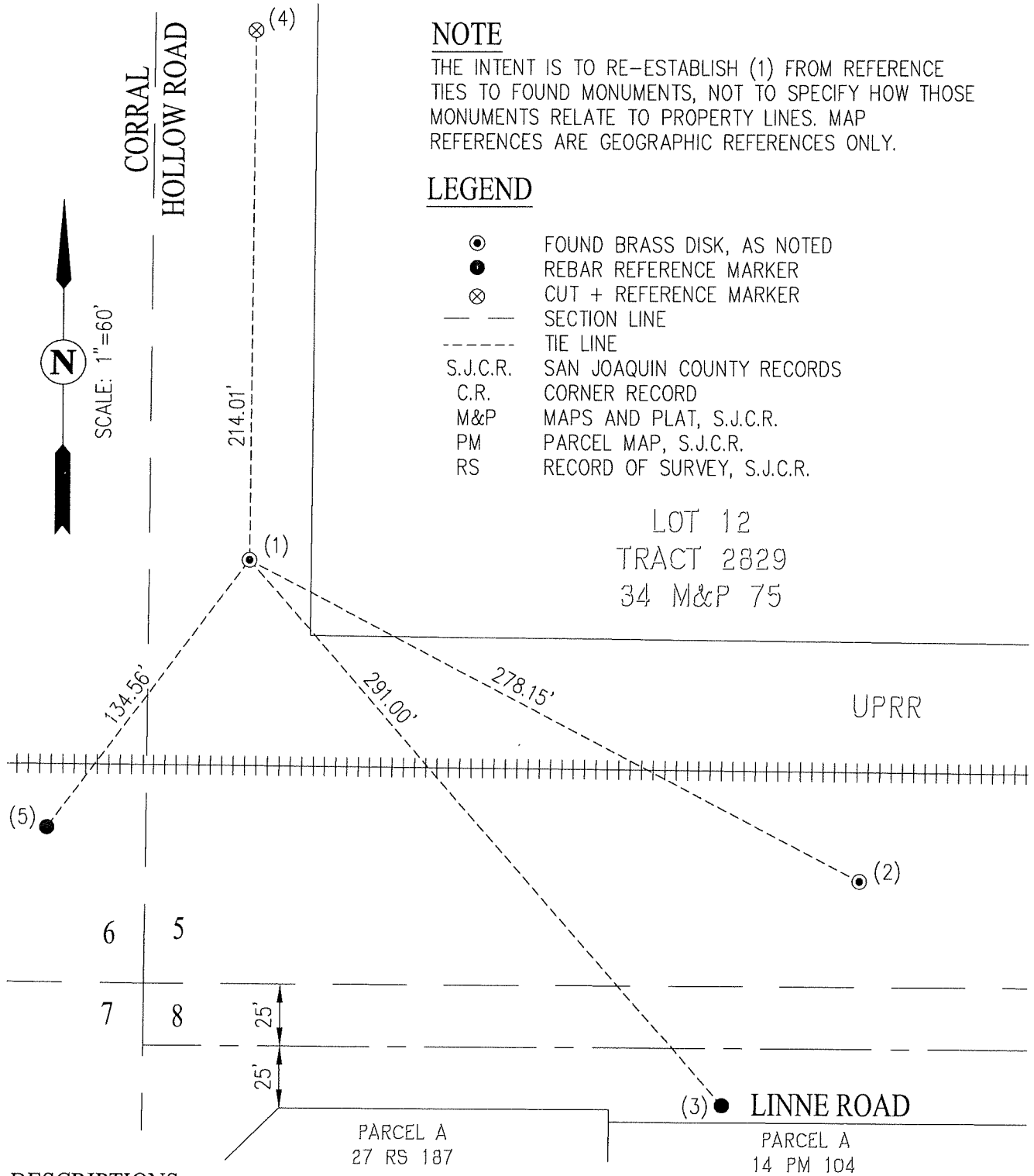
NOTE

THE INTENT IS TO RE-ESTABLISH (1) FROM REFERENCE TIES TO FOUND MONUMENTS, NOT TO SPECIFY HOW THOSE MONUMENTS RELATE TO PROPERTY LINES. MAP REFERENCES ARE GEOGRAPHIC REFERENCES ONLY.

LEGEND

- ⊙ FOUND BRASS DISK, AS NOTED
- REBAR REFERENCE MARKER
- ⊗ CUT + REFERENCE MARKER
- SECTION LINE
- - - - TIE LINE
- S.J.C.R. SAN JOAQUIN COUNTY RECORDS
- C.R. CORNER RECORD
- M&P MAPS AND PLAT, S.J.C.R.
- PM PARCEL MAP, S.J.C.R.
- RS RECORD OF SURVEY, S.J.C.R.

LOT 12
TRACT 2829
34 M&P 75



DESCRIPTIONS

- (1) SET 2" BRASS DISK ON TOP OF CURB STAMPED "CITY OF TRACY GPS 2079 RESET, LS 8164, SURVEY CONTROL" ELEV: 172.56'
- (2) FOUND CITY OF TRACY GPS-11: 1.5" BOLT WITH PUNCH IN WELL. ELEV: 171.33' PER C.R. 17-223
- (3) FOUND REBAR & CAP STAMPED "CBG CONTROL", 3' SOUTHEAST OF POWER POLE "C3046", ELEV: 172.95' PER C.R. 17-223
- (4) FOUND CUT + ON CURB, 5.5' NORTHWEST OF FIRE HYDRANT. ELEV: 168.94' PER C.R. 17-223
- (5) FOUND REBAR AND CAP STAMPED "CBG CONTROL", 2' NORTHEAST OF THE NORTHEASTERN CORNER OF UPRR CROSSING GEAR BUILDING, ELEV: 173.93' PER C.R. 17-223