

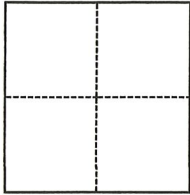
CORNER RECORD

Agency Index CR-19-142
Document Number _____

City of STOCKTON County of SAN JOAQUIN, California
Brief Legal Description PARCEL 1, P.M. 16-160, S.J.C.R.

CORNER TYPE

COORDINATES (Optional)



- Government Corner
- Meander
- Rancho
- Control
- Property
- Other

Date of Survey 09/10/2019

N. _____ E. _____
 Elevation _____
 Units Metric U.S. Survey Foot
 Horizontal Datum _____
 Zone _____ Epoch Date _____
 Vertical Datum _____
 Complies with Public Resources Code §§8801-8819
 Complies with Public Resources Code §§8890-8902

- PLS Act Ref.: 8765(d) 8771 8773 Other: _____
- Corner/Monument: Left as found Established Rebuilt Pre-Construction
 Found and tagged Reestablished Referenced Post-Construction

Narrative of corner identified and monument as found, set, reset, replaced, or removed:
 See sheet #2 for description(s):

**FOUND MONUMENTS PER P.M. 16-160, S.J.C.R.
RESET SOUTHWEST CORNER AND REPLACED NORTHWEST AND NORTHEAST CORNER
MONUMENTS.**

SURVEYOR'S STATEMENT

This Corner Record was prepared by me or under my direction in conformance with
 the Professional Land Surveyors' Act on 11/06/2019
 Signed Walter John Shoup P.L.S. or R.C.E. No. 7736



COUNTY SURVEYOR'S STATEMENT

This Corner Record was received November 6, 2019
 and examined and filed December 5, 2019
 Signed James E. Hart P.L.S. or R.C.E. No. 8657
 Title County Surveyor



County Surveyor's Comment

LEGEND:

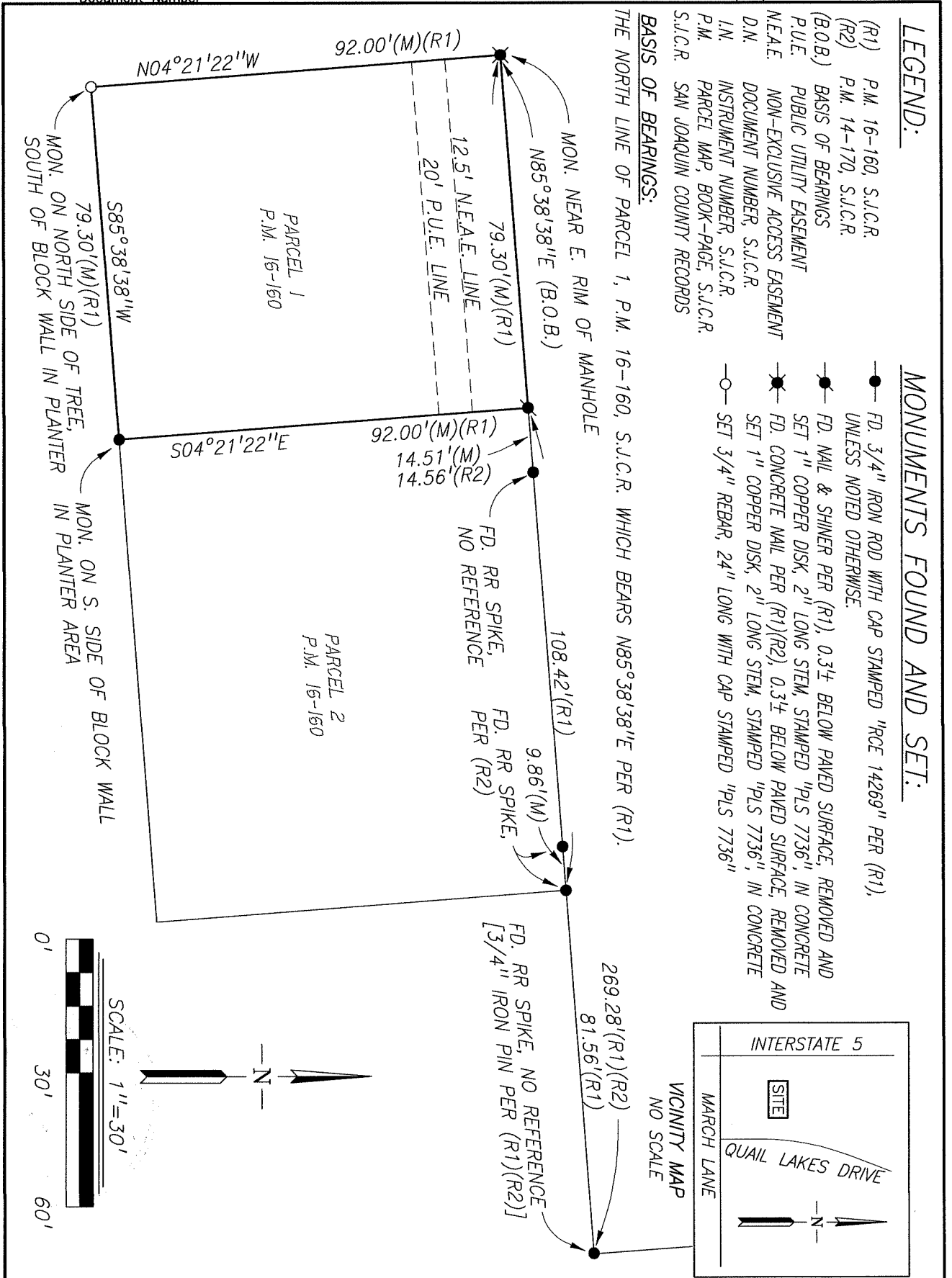
- (R1) P.M. 16-160, S.J.C.R.
- (R2) P.M. 14-170, S.J.C.R.
- (B.O.B.) BASIS OF BEARINGS
- P.U.E. PUBLIC UTILITY EASEMENT
- NE.A.E. NON-EXCLUSIVE ACCESS EASEMENT
- D.N. DOCUMENT NUMBER, S.J.C.R.
- I.N. INSTRUMENT NUMBER, S.J.C.R.
- P.M. PARCEL MAP, BOOK-PAGE, S.J.C.R.
- S.J.C.R. SAN JOAQUIN COUNTY RECORDS

BASIS OF BEARINGS:

THE NORTH LINE OF PARCEL 1, P.M. 16-160, S.J.C.R. WHICH BEARS $N85^{\circ}38'38''E$ PER (R1).

MONUMENTS FOUND AND SET:

- FD. 3/4" IRON ROD WITH CAP STAMPED "RCE 14269" PER (R1), UNLESS NOTED OTHERWISE.
- FD. NAIL & SHINER PER (R1), 0.3± BELOW PAVED SURFACE, REMOVED AND SET 1" COPPER DISK, 2" LONG STEM, STAMPED "PLS 7736", IN CONCRETE
- FD. CONCRETE NAIL PER (R1)/(R2), 0.3± BELOW PAVED SURFACE, REMOVED AND SET 1" COPPER DISK, 2" LONG STEM, STAMPED "PLS 7736", IN CONCRETE
- SET 3/4" REBAR, 24" LONG WITH CAP STAMPED "PLS 7736"



Scale: 1"=30'
Job No.: 19-133

CORNER RECORD
PARCEL 1, P.M. 16-160, S.J.C.R.

Date: 10/29/2019
DWG: 19098SV