

CORNER RECORD

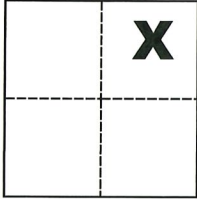
Agency Index CR-19-138
Document Number _____

City of Stockton County of San Joaquin, California

Brief Legal Description Northeast corner of Lot 1360 per M. & P. 27-75, S.J.C.R.

CORNER TYPE

COORDINATES (Optional)



Government Corner Control
Meander Property
Rancho Other

N. _____ E. _____
Elevation _____
Units Metric U.S. Survey Foot
Horizontal Datum _____
Zone _____ Epoch Date _____
Vertical Datum _____

Date of Survey October 3, 2019

Complies with Public Resources Code §§8801-8819
 Complies with Public Resources Code §§8890-8902

Sec. 7, T.2N., R.6E.,
M.D.B. & M.

PLS Act Ref.: 8765(d) 8771 8773 Other:
Corner/Monument: Left as found Established Rebuilt Pre-Construction
 Found and tagged Reestablished Referenced Post-Construction

Narrative of corner identified and monument as found, set, reset, replaced, or removed:

See sheet #2 for description(s):

SURVEYOR'S STATEMENT

This Corner Record was prepared by me or under my direction in conformance with

the Professional Land Surveyors' Act on Oct. 4, 2019

Signed Michael L. Quartroni P.L.S. or R.C.E. No. L.S. 4450



COUNTY SURVEYOR'S STATEMENT

This Corner Record was received November 1, 2019

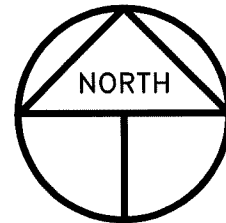
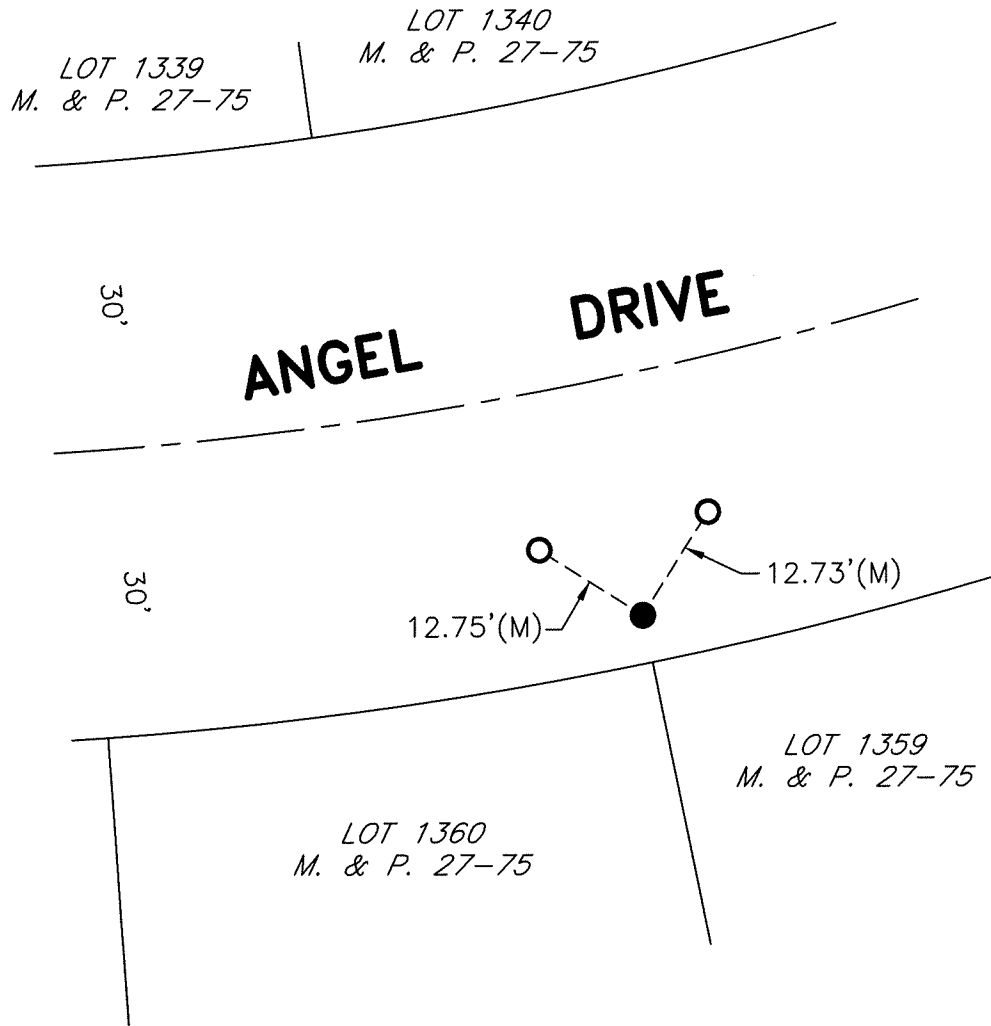
and examined and filed December 5, 2019

Signed James E. Hart P.L.S. or R.C.E. No. 8657

Title County Surveyor



County Surveyor's Comment





SCALE: 1" = 20'
2019-223

LEGEND

-  INDICATES FOUND LARGE CHISELED CROSS, NO REFERENCE
-  INDICATES SET DURA NAIL AND TAG STAMPED LS 4450
- M. & P. INDICATES MAPS AND PLATS, VOLUME AND PAGE, S.J.C.R.
- S.J.C.R. INDICATES SAN JOAQUIN COUNTY RECORDS
- (M) INDICATES MEASURED ON THIS SURVEY