

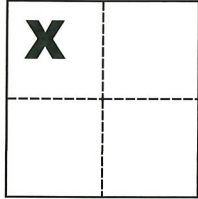
# CORNER RECORD

Agency Index CR-19-136  
Document Number \_\_\_\_\_

City of \_\_\_\_\_ County of San Joaquin, California  
Brief Legal Description Northerly line of "Designated Remainder" per P.M. 22-24, S.J.C.R.

### CORNER TYPE

### COORDINATES (Optional)



Government Corner  Control   
Meander  Property   
Rancho  Other

N. \_\_\_\_\_ E. \_\_\_\_\_  
Elevation \_\_\_\_\_  
Units Metric  U.S. Survey Foot   
Horizontal Datum \_\_\_\_\_  
Zone \_\_\_\_\_ Epoch Date \_\_\_\_\_

Date of Survey September 27, 2019

Vertical Datum \_\_\_\_\_

Sec. 22, T.2S., R.7E.,  
M.D.B. & M.

Complies with Public Resources Code §§8801-8819  
 Complies with Public Resources Code §§8890-8902

PLS Act Ref.:  8765(d)  8771  8773  Other:  
Corner/Monument:  Left as found  Established  Rebuilt  Pre-Construction  
 Found and tagged  Reestablished  Referenced  Post-Construction

Narrative of corner identified and monument as found, set, reset, replaced, or removed:

See sheet #2 for description(s):

### SURVEYOR'S STATEMENT

This Corner Record was prepared by me or under my direction in conformance with

the Professional Land Surveyors' Act on Oct. 30, 2019

Signed Michael L. Quaratali P.L.S. or R.C.E. No. L.S. 4450



### COUNTY SURVEYOR'S STATEMENT

This Corner Record was received November 1, 2019

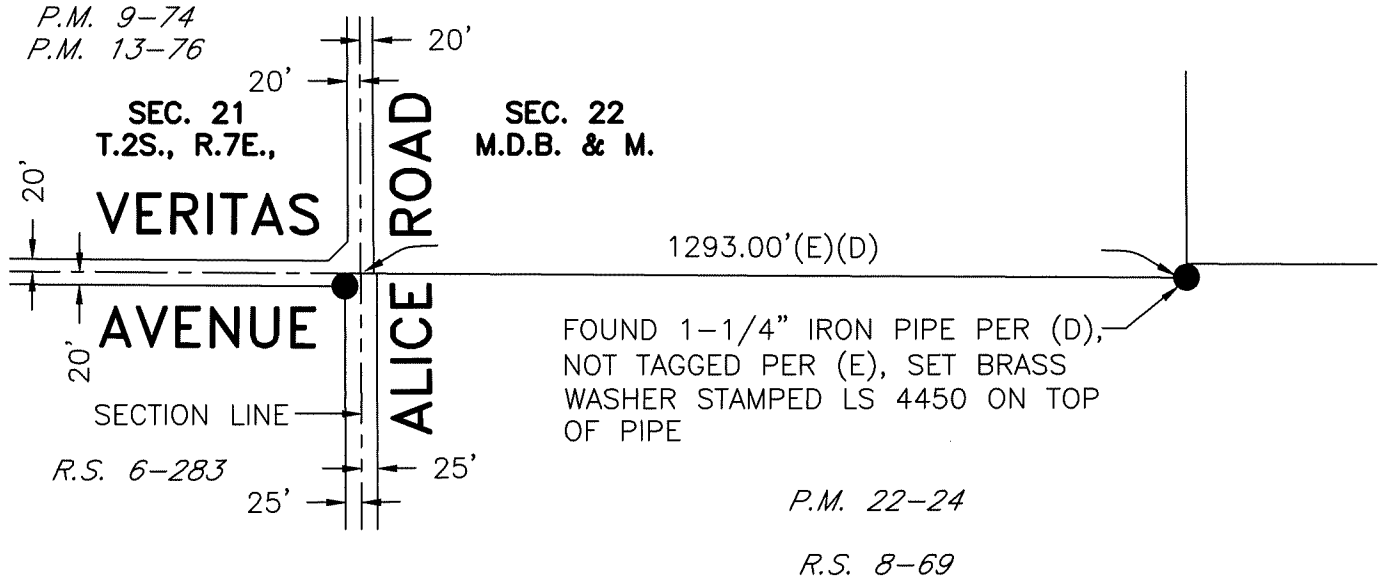
and examined and filed December 5, 2019

Signed James E. Hart P.L.S. or R.C.E. No. 8657

Title County Surveyor

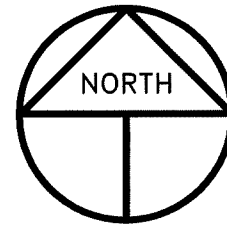
County Surveyor's Comment





### REFERENCES

- (A) R.S. 6-283, S.J.C.R.
- (B) P.M. 9-74, S.J.C.R.
- (C) P.M. 13-76, S.J.C.R.
- (D) R.S. 8-69, S.J.C.R.
- (E) P.M. 22-24, S.J.C.R.



SCALE: 1" = 300'  
2019-211

### LEGEND

- INDICATES FOUND 2" IRON PIPE PER (A), NOT TAGGED PER (B)(C), SET BRASS WASHER STAMPED LS 4450 ON TOP OF PIPE, UNLESS OTHERWISE NOTED
- R.S. INDICATES RECORD OF SURVEY, BOOK AND PAGE, S.J.C.R.
- P.M. INDICATES PARCEL MAP, BOOK AND PAGE, S.J.C.R.
- S.J.C.R. INDICATES SAN JOAQUIN COUNTY RECORDS