

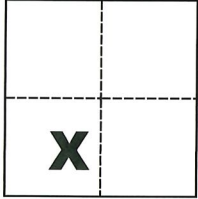
# CORNER RECORD

Agency Index CR-19-135  
Document Number \_\_\_\_\_

City of Stockton County of San Joaquin, California  
Brief Legal Description Northeasterly corner of Lot 219, per M. & P. 18-29, S.J.C.R.

### CORNER TYPE

### COORDINATES (Optional)



Government Corner  Control   
Meander  Property   
Rancho  Other

N. \_\_\_\_\_ E. \_\_\_\_\_  
Elevation \_\_\_\_\_  
Units Metric  U.S. Survey Foot   
Horizontal Datum \_\_\_\_\_  
Zone \_\_\_\_\_ Epoch Date \_\_\_\_\_  
Vertical Datum \_\_\_\_\_

Date of Survey August 9, 2019

Sec. 19, T.2N., R.6E.,  
M.D.B. & M.

Complies with Public Resources Code §§8801-8819  
 Complies with Public Resources Code §§8890-8902

PLS Act Ref.:  8765(d)  8771  8773  Other:  
Corner/Monument:  Left as found  Established  Rebuilt  Pre-Construction  
 Found and tagged  Reestablished  Referenced  Post-Construction

Narrative of corner identified and monument as found, set, reset, replaced, or removed:

See sheet #2 for description(s):

### SURVEYOR'S STATEMENT

This Corner Record was prepared by me or under my direction in conformance with

the Professional Land Surveyors' Act on Oct. 29, 2019

Signed Michael L. Quaratoro P.L.S. or R.C.E. No. L.S. 4450



### COUNTY SURVEYOR'S STATEMENT

This Corner Record was received November 1, 2019

and examined and filed December 5, 2019

Signed James E. Hart P.L.S. or R.C.E. No. 8657

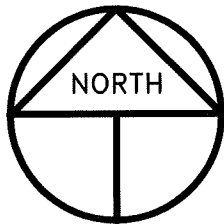
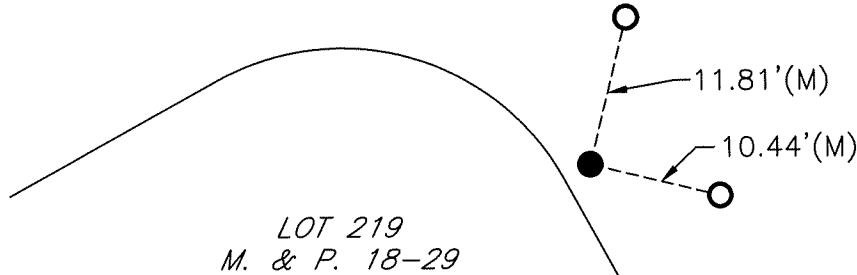
Title County Surveyor

County Surveyor's Comment



MONITOR CIRCLE NORTH

CUMBERLAND PLACE



SCALE: 1" = 15'  
2019-186

### LEGEND

- INDICATES FOUND CHISELED CROSS, NO REFERENCE, CHISELED CROSS IS VERY LARGE AND CRUDE, EXISTING SIDEWALK IS VERY ERODED
- INDICATES SET MAG NAIL
- M. & P. INDICATES MAPS AND PLATS, VOLUME AND PAGE, S.J.C.R.
- S.J.C.R. INDICATES SAN JOAQUIN COUNTY RECORDS
- (M) INDICATES MEASURED ON THIS SURVEY