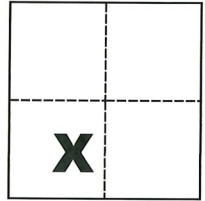


CORNER RECORD

Agency Index CR-19-133

Document Number _____

City of Stockton County of San Joaquin, CaliforniaBrief Legal Description Most Northerly corner of Lot 175 and Southwesterly line of Lot 180 per M. & P. 24-69, S.J.C.R.**CORNER TYPE**

- Government Corner Control
- Meander Property
- Rancho Other

Date of Survey August 15, 2019**COORDINATES (Optional)**

- N. _____ E. _____
- Elevation _____
- Units Metric U.S. Survey Foot
- Horizontal Datum _____
- Zone _____ Epoch Date _____
- Vertical Datum _____

Sec. 32, T.2N., R.6E.,
M.D.B. & M.

- Complies with Public Resources Code §§8801-8819
- Complies with Public Resources Code §§8890-8902

- PLS Act Ref.: 8765(d) 8771 8773 Other:
- Corner/Monument: Left as found Established Rebuilt Pre-Construction
- Found and tagged Reestablished Referenced Post-Construction

Narrative of corner identified and monument as found, set, reset, replaced, or removed:

See sheet #2 for description(s):

SURVEYOR'S STATEMENT

This Corner Record was prepared by me or under my direction in conformance with
the Professional Land Surveyors' Act on Oct. 29, 2019

Signed Michael L. Quartaroli P.L.S. or R.C.E. No. L.S. 4450

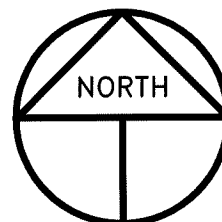
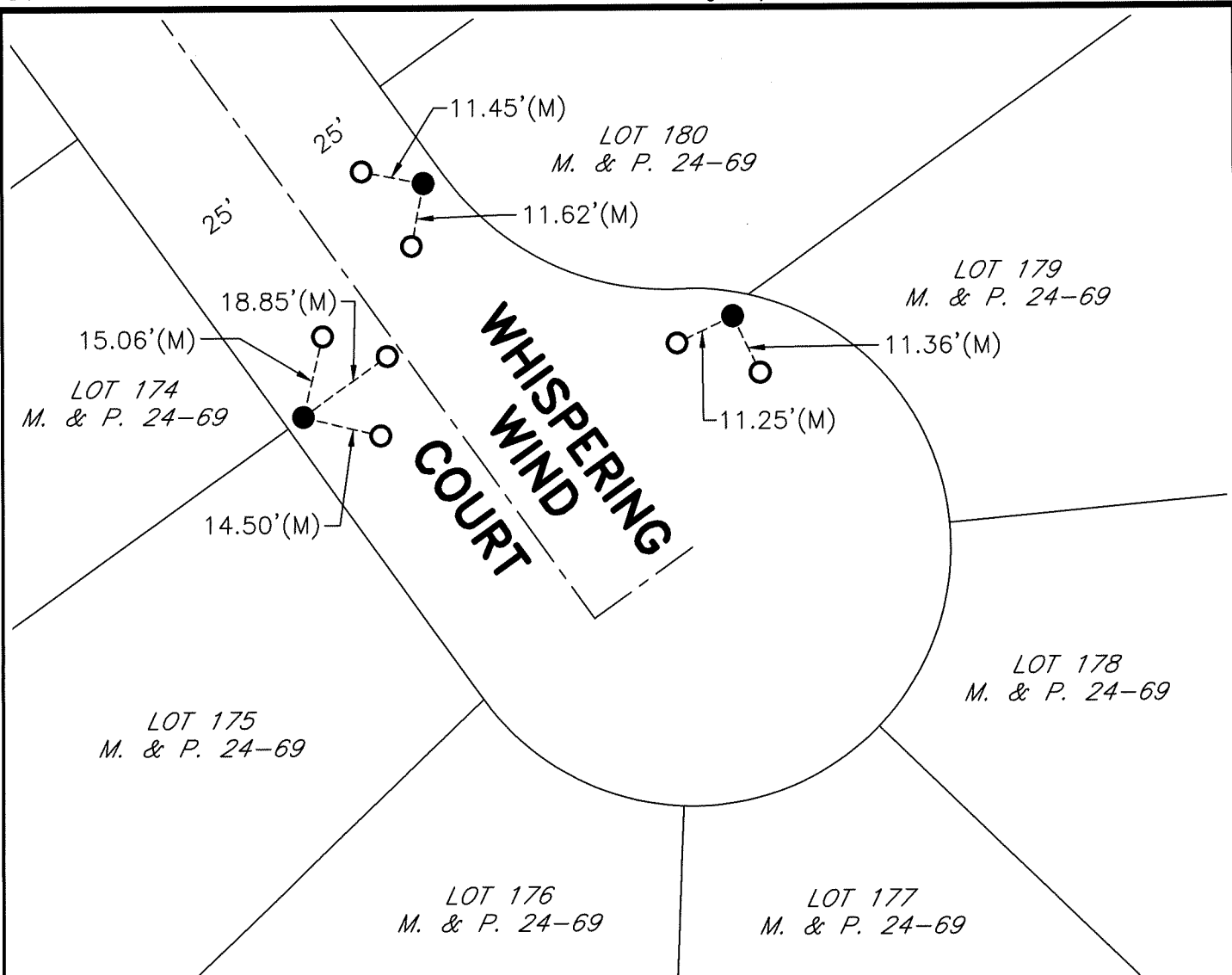
**COUNTY SURVEYOR'S STATEMENT**

This Corner Record was received November 1, 2019
and examined and filed December 5, 2019

Signed James E. Hart P.L.S. or R.C.E. No. 8657
Title County Surveyor



County Surveyor's Comment



SCALE: 1" = 30'
2019-190

LEGEND

- INDICATES FOUND CHISELED CROSS, NO REFERENCE, CHISELED CROSS IS VERY LARGE AND CRUDE, EXISTING SIDEWALK IS VERY ERODED
- INDICATES SET MAG NAIL
- M. & P. INDICATES MAPS AND PLATS, VOLUME AND PAGE, S.J.C.R.
- S.J.C.R. INDICATES SAN JOAQUIN COUNTY RECORDS
- (M) INDICATES MEASURED ON THIS SURVEY