

CORNER RECORD

Agency Index CR-19-132

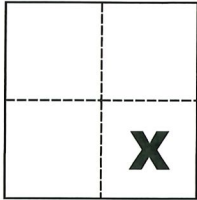
Document Number _____

City of Stockton County of San Joaquin, California

Brief Legal Description Northeast corner of Lot 21, per M. & P. 21-24, S.J.C.R.

CORNER TYPE

COORDINATES (Optional)



- Government Corner Control
- Meander Property
- Rancho Other

N. _____ E. _____

Elevation _____

Units Metric U.S. Survey Foot

Horizontal Datum _____

Zone _____ Epoch Date _____

Date of Survey August 7, 2019

Vertical Datum _____

Sec. A, C.M. Weber Grant

Complies with Public Resources Code §§8801-8819

Complies with Public Resources Code §§8890-8902

PLS Act Ref.: 8765(d) 8771 8773 Other:

Corner/Monument: Left as found Established Rebuilt Pre-Construction

Found and tagged Reestablished Referenced Post-Construction

Narrative of corner identified and monument as found, set, reset, replaced, or removed:

See sheet #2 for description(s):

SURVEYOR'S STATEMENT

This Corner Record was prepared by me or under my direction in conformance with the Professional Land Surveyors' Act on Oct 29, 2019

Signed Michael L. Quattaro P.L.S. or R.C.E. No. L.S. 4450



COUNTY SURVEYOR'S STATEMENT

This Corner Record was received November 1, 2019

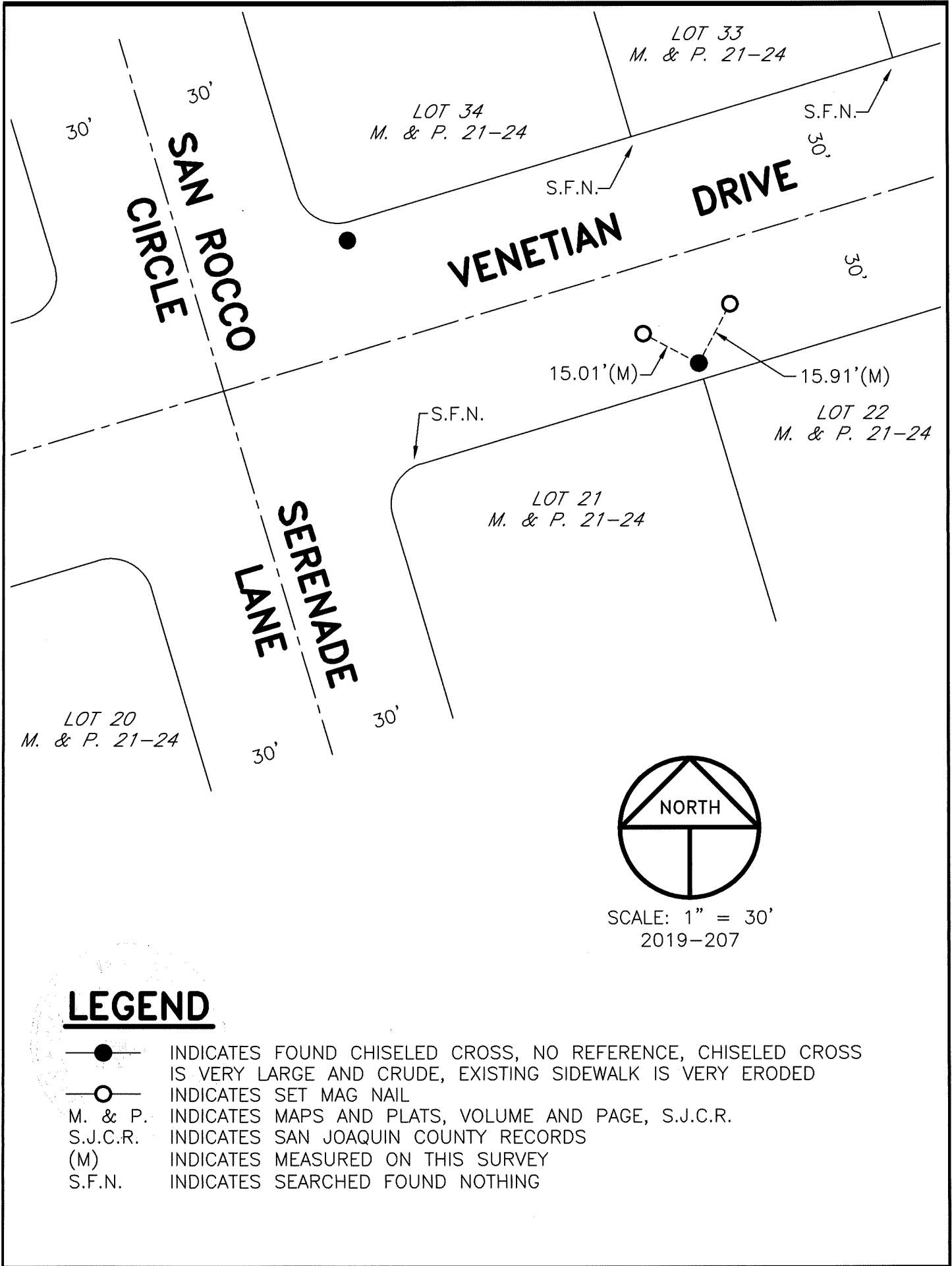
and examined and filed December 5, 2019

Signed James E. Hart P.L.S. or R.C.E. No. 8657

Title County Surveyor

County Surveyor's Comment





LEGEND

- INDICATES FOUND CHISELED CROSS, NO REFERENCE, CHISELED CROSS IS VERY LARGE AND CRUDE, EXISTING SIDEWALK IS VERY ERODED
- INDICATES SET MAG NAIL
- M. & P. INDICATES MAPS AND PLATS, VOLUME AND PAGE, S.J.C.R.
- S.J.C.R. INDICATES SAN JOAQUIN COUNTY RECORDS
- (M) INDICATES MEASURED ON THIS SURVEY
- S.F.N. INDICATES SEARCHED FOUND NOTHING