

CORNER RECORD

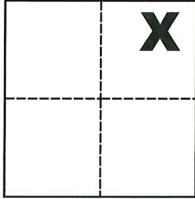
Agency Index CR-19-131
Document Number _____

City of Stockton County of San Joaquin, California

Brief Legal Description Ely lot cor. common to Lots 314 and 315 and Wly lot cor. common to Lots 312 and 313 per M.&P. 25-99, S.J.C.R.

CORNER TYPE

COORDINATES (Optional)



Government Corner Control
Meander Property
Rancho Other

N. _____ E. _____

Elevation _____

Units Metric U.S. Survey Foot

Horizontal Datum _____

Zone _____ Epoch Date _____

Date of Survey August 28, 2019

Vertical Datum _____

Complies with Public Resources Code §§8801-8819

Complies with Public Resources Code §§8890-8902

Sec. 7, T.2N., R.6E.,
M.D.B. & M.

PLS Act Ref.: 8765(d) 8771 8773 Other:

Corner/Monument: Left as found Established Rebuilt Pre-Construction

Found and tagged Reestablished Referenced Post-Construction

Narrative of corner identified and monument as found, set, reset, replaced, or removed:

See sheet #2 for description(s):

SURVEYOR'S STATEMENT

This Corner Record was prepared by me or under my direction in conformance with

the Professional Land Surveyors' Act on Sept. 24, 2019

Signed Michael L. Quarles P.L.S. or R.C.E. No. L.S. 4450



COUNTY SURVEYOR'S STATEMENT

This Corner Record was received November 1, 2019

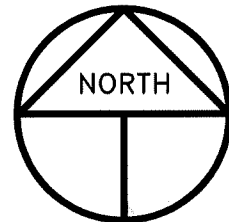
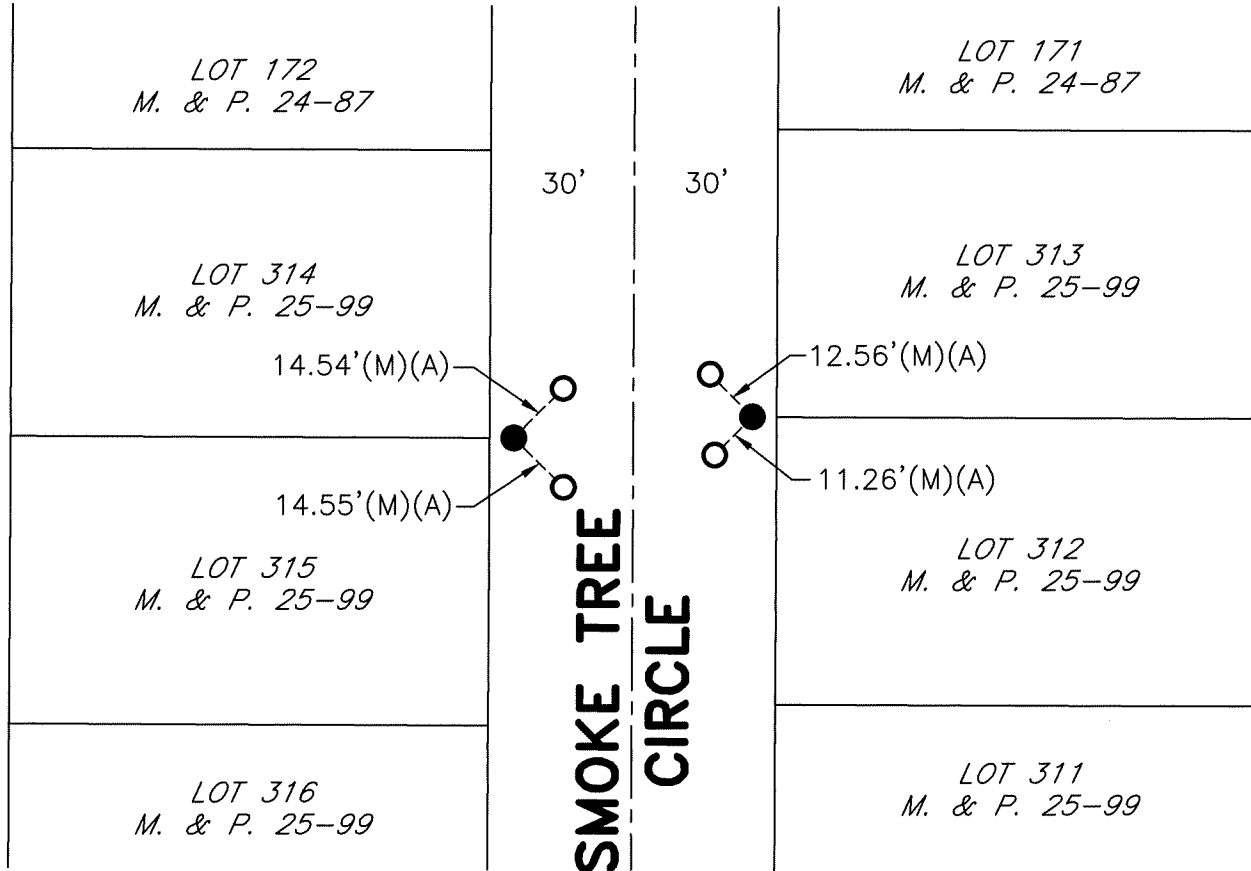
and examined and filed December 5, 2019

Signed James E. Hart P.L.S. or R.C.E. No. 8657

Title County Surveyor

County Surveyor's Comment





SCALE: 1" = 40'
2019-149 - POST

REFERENCE

(A) C.R.-19-90, S.J.C.S.R.

LEGEND

- INDICATES FOUND CHISELED CROSS, CHISELED CROSS IS VERY LARGE AND CRUDE, EXISTING SIDEWALK IS VERY ERODED PER (A)
- INDICATES FOUND CONCRETE NAIL AND TAG STAMPED LS 4450 PER (A)
- M. & P. INDICATES MAPS AND PLATS, VOLUME AND PAGE, S.J.C.R.
- C.R. INDICATES CORNER RECORD, S.J.C.S.R.
- S.J.C.R. INDICATES SAN JOAQUIN COUNTY RECORDS
- S.J.C.S.R. INDICATES SAN JOAQUIN COUNTY SURVEYOR'S RECORDS
- (M) INDICATES MEASURED ON THIS SURVEY