

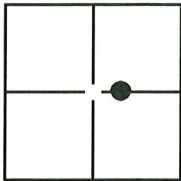
# CORNER RECORD

Agency Index: CR-19-126

Document Number: \_\_\_\_\_

City of LODI County of SAN JOAQUIN, California

Brief Legal Description MONUMENTS ALONG LOCKEFORD STREET AT STOCKTON STREET, LOCATED IN THE EAST HALF OF SECTION 1, T.3 N., R.6 E., MOUNT DIABLO BASE AND MERIDIAN.



SEC. 1  
T.3N, R.6E

### CORNER TYPE

- Government Corner  Control   
 Meander  Property   
 Rancho  Other

Date of Survey 09-10-2019

### COORDINATES (Optional)

N. \_\_\_\_\_ E. \_\_\_\_\_

Elevation: \_\_\_\_\_

Units Metric  U.S. Survey Foot

Horizontal Datum: \_\_\_\_\_

Zone: \_\_\_\_\_ Epoch Date: \_\_\_\_\_

Vert. Datum: \_\_\_\_\_

Complies with Public Resources Code §§8801-8819

Complies with Public Resources Code §§8890-8902

PLS Act Ref:  8765(d)  8771  8773  Other:

Corner/  
Monument:  Left as found  Established  Rebuilt  Pre-Construction  
 Found and Tagged  Reestablished  Referenced  Post-Construction

Narrative of corner identified and monument as found, set, reset, replaced, or removed:

See sheet #2 for description(s):

TWO (2) 1" IRON PIPES NOT TAGGED, ONE (1) 3/4" IRON ROD NOT TAGGED, AND A PK NAIL NOT TAGGED WERE REPLACED WITH CONCRETE NAILS AND BRASS TAG "LS 6953". ONE (1) 2" BRASS DISK STAMPED "CITY OF LODI VERTICAL CONTROL 1210" WAS RELOCATED AND REPLACED WITH A 2" BRASS DISK ON THE TOP OF CURB STAMPED "CITY OF LODI VERT CONTROL". ALL AS SHOWN ON PAGE 2.

### SURVEYOR'S STATEMENT

This Corner Record was prepared by me or under my direction in conformance with the Professional Land Surveyors' Act on SEPTEMBER 30, 2019,

Signed [Signature] P.L.S. or R.C.E. Number 6953



### COUNTY SURVEYOR'S STATEMENT

This Corner Record was received October 25, 2019

and examined and filed November 6, 2019

Signed James E. Hart P.L.S. or R.C.E. No: 8657

Title County Surveyor

County Surveyor's Comment \_\_\_\_\_



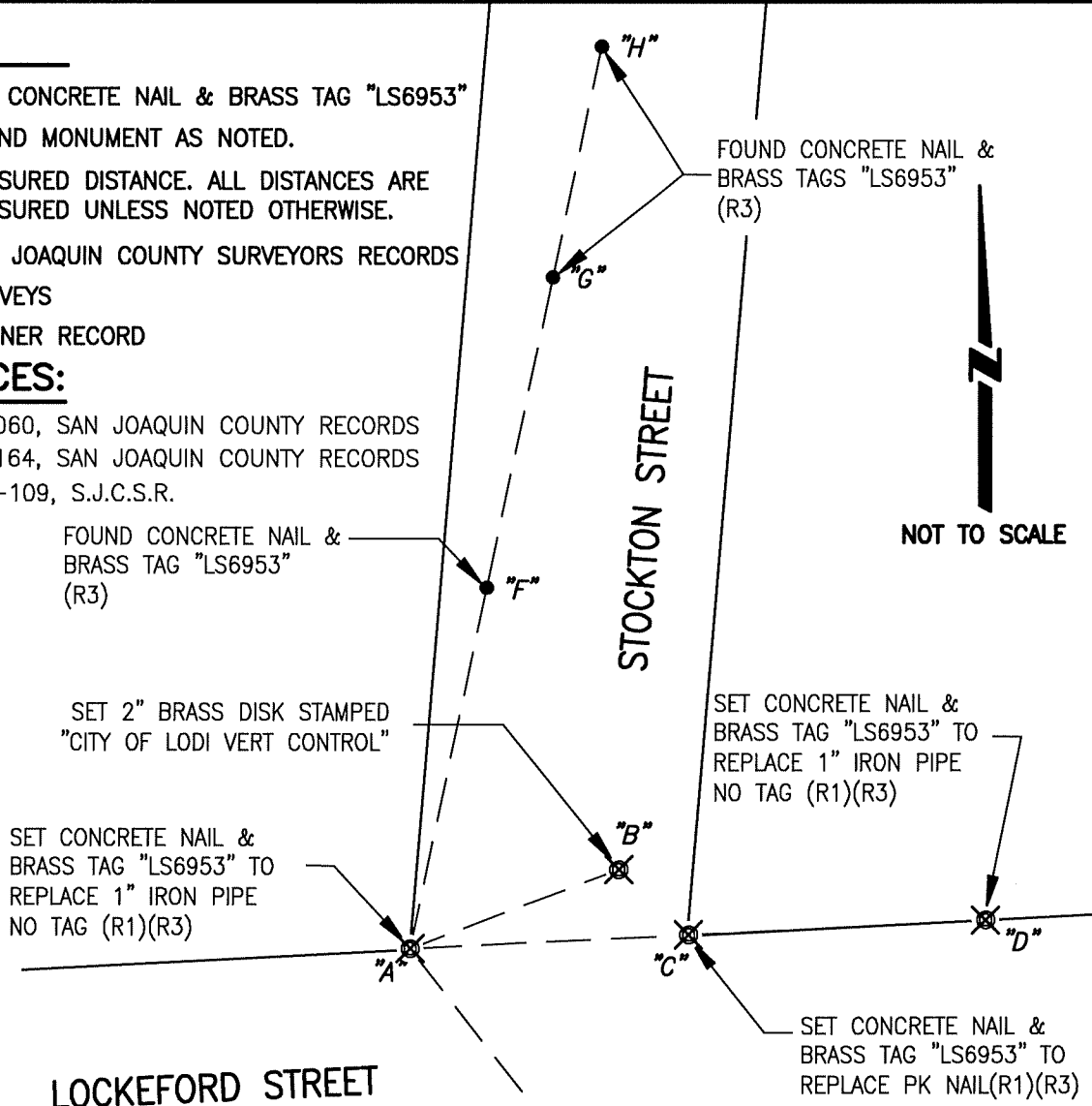
**LEGEND:**

- ⊗ SET CONCRETE NAIL & BRASS TAG "LS6953"
- FOUND MONUMENT AS NOTED.
- (M) MEASURED DISTANCE. ALL DISTANCES ARE MEASURED UNLESS NOTED OTHERWISE.

S.J.C.S.R. SAN JOAQUIN COUNTY SURVEYORS RECORDS  
 -S- SURVEYS  
 CR CORNER RECORD

**REFERENCES:**

- (R1) 37-S-060, SAN JOAQUIN COUNTY RECORDS
- (R2) 37-S-164, SAN JOAQUIN COUNTY RECORDS
- (R3) CR-19-109, S.J.C.S.R.



LOCKEFORD STREET

STOCKTON STREET

**∠ AND DISTANCE TABLE**

BS @ FS	∠	FS DISTANCE	ELEVATIONS (NAVD 88)
H-A-B	57°17'09"	67.29'(M)	51.86'
H-A-C	75°19'05"	80.94'(M)(R3)	
H-A-D	75°16'39"	167.46'(M)(R3)	
H-A-E	130°03'41"	111.90'(M)(R3)	
H-A-F	00°00'00"	171.93'(M)(R3)	51.72'
H-A-G	00°00'00"	319.78'(M)(R3)	52.38'
H-A-H	00°00'00"	429.69'(M)(R3)	52.22'