

CORNER RECORD

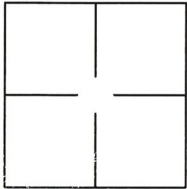
Agency Index CR-19-125

Document Number _____

City of STOCKTON

County of SAN JOAQUIN, California

Brief Legal Description SOUTHEAST CORNER OF PARCEL 1, 22-PM-4, S.J.C.R.



C.M. WEBER
GRANT

CORNER TYPE

- Government Corner Control
 Meander Property
 Rancho Other

Date of Survey 2019-09-04

COORDINATES (Optional)

N. _____ E. _____

Elevation _____

Units Metric U.S. Survey Foot

Horizontal Datum _____

Zone _____ Epoch Date _____

Vertical Datum: _____

Complies with Public Resources Code §§8801-8819

Complies with Public Resources Code §§8890-8902

PLS Act Ref.: 8765(d) 8771 8773 Other: _____

Corner/Monument: Left as found Established Rebuilt Pre-Construction
 Found and tagged Reestablished Referenced Post-Construction

Narrative of corner identified and monument as found, set, reset, replaced, or removed:

See sheet #2 for description(s):

SURVEYOR'S STATEMENT

This Corner Record was prepared by me or under my direction in conformance with the Professional Land Surveyor's Act on SEPTEMBER 9TH, 2019.

Signed [Signature] P.L.S. or R.C.E. No.: 8366



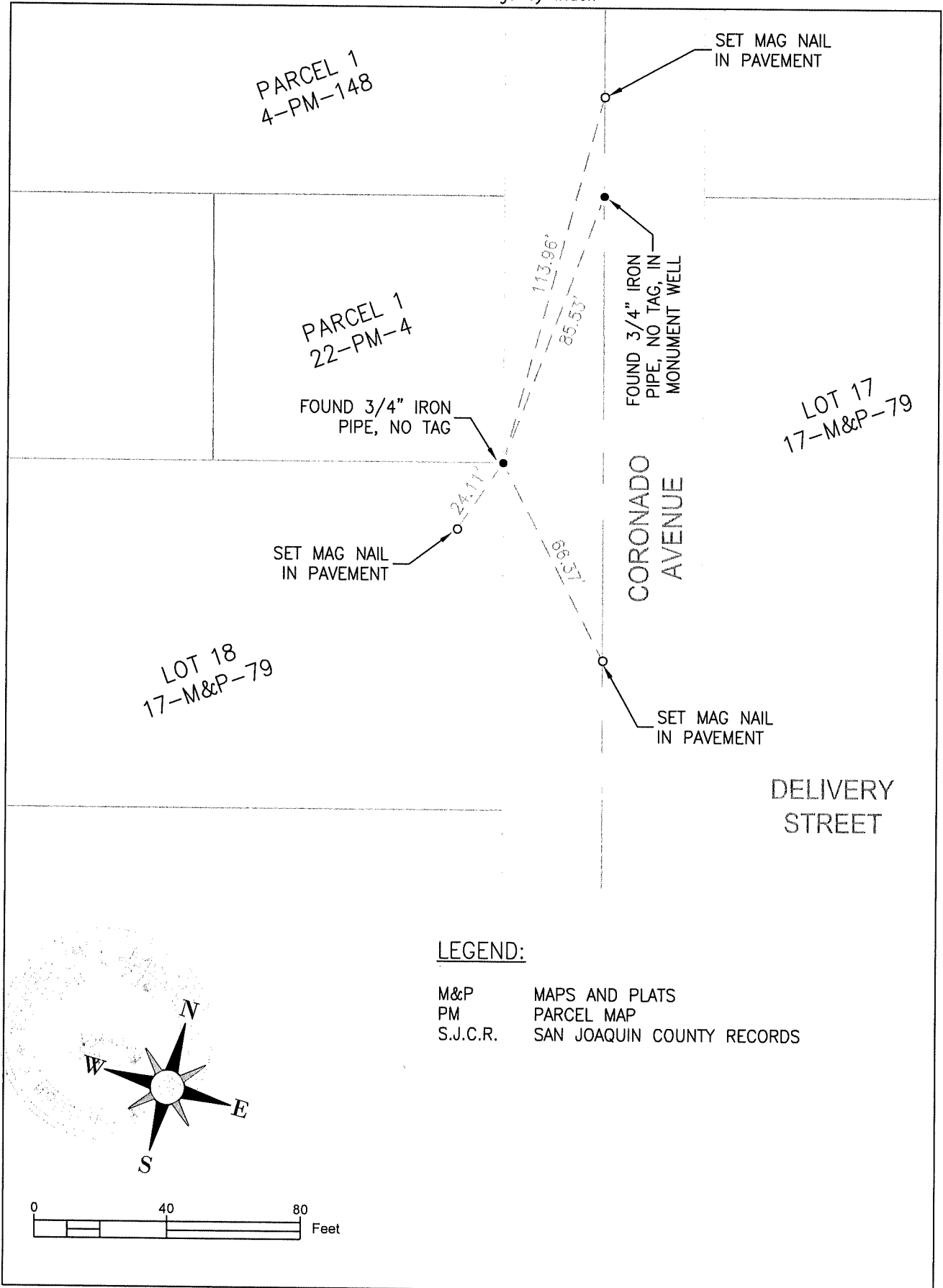
COUNTY SURVEYOR'S STATEMENT

This Corner Record was received October 25, 2019 and examined and filed November 6, 2019.

Signed James E. Hart P.L.S. or R.C.E. No.: 8657
 Title County Surveyor

County Surveyor's Comment _____





LEGEND:

- M&P MAPS AND PLATS
- PM PARCEL MAP
- S.J.C.R. SAN JOAQUIN COUNTY RECORDS

